

New

*OrthoThermic™ Thumb CMC
Restriction Splint*



**Ortho
Thermic™**



***Soothing
Comfort***

COMPRESSION + HEAT

Ortho Thermic™

THERAPEUTIC
PAIN RELIEF

Thumb CMC Restriction Splint



Soothing Comfort

Provides support and warmth for the thumb CMC joint.

Features a moldable metal stay for enhanced support
at the thumb's base.

Silicon beads on outer glove surface improve gripping ability.
Heat-generating antimicrobial liner.

Not made
with natural
rubber latex.

OrthoThermic™ Thumb CMC Restriction Splint

Left	Right	Size	MP Circumference	
NC79670	NC79671	Small	6" - 7"	(15-18 cm)
NC79672	NC79673	Small +	6½" - 7¼"	(17-18 cm)
NC79674	NC79675	Medium	7" - 8"	(18-20 cm)
NC79676	NC79677	Medium +	7¼" - 8¼"	(18-21 cm)
NC79678	NC79679	Large	8" - 9"	(20-23 cm)
NC79680	NC79681	Large +	8¾" - 9½"	(21-24 cm)
NC79682	NC79683	X-Large	9" - 10"	(23-25 cm)



To order, log in at www.ncmedical.com or call 800.821.9319

Available in Virtual Showroom™

COMPRESSION + HEAT

Ortho Thermic™

THERAPEUTIC
PAIN RELIEF

Gloves

Soothing Comfort



Provides a thermal effect
to increase body heat.

Wicks away moisture.

Silicon beads on outer
glove surface for improved
gripping ability.

Antimicrobial liner.

Sold in pairs.

Hand wash with mild soap
and water. Air dry.



SCAN
to learn more



OrthoThermic™ Gloves
Size

MP Circumference

	Size	MP Circumference	
NC54100-XS	X-Small	6" - 6¾"	(15-17 cm)
NC54100-SM	Small	7" - 7¾"	(18-20 cm)
NC54100-MD	Medium	8" - 9"	(21-23 cm)
NC54100-LG	Large	9¼" - 10½"	(24-26 cm)
NC54100-XL	X-Large	10¾" - 11½"	(27-29 cm)
NC54100-XXL	XX-Large	Over 11¾"	(Over 30 cm)

To order, log in at www.ncmedical.com
or call **800.821.9319**

Available in Virtual Showroom™

COMPRESSION + HEAT

Compression Gloves

Provides light to moderate compression for the hand and wrist.

- Provides warmth and soft, gentle compression to help soothe soft tissue edema and arthritic joint pain.
- Two wrist lengths and two finger styles feature an open slit in the cuff, for easy application and non-constricting fit.
- Made of a soft, silky nylon and spandex blend, with seams on the outside for smooth edema control.
- Sold individually, Left or Right.
- Machine wash delicate, air dry.

Now available in *XL* sizes



**Beige
Full Finger
Over The Wrist Length**

	Left	Right
XS	NC53210	NC53211
S	NC53212	NC53213
M	NC53214	NC53215
L	NC53216	NC53217
XL	NC53218	NC53219

Beige Full Finger Wrist Length		
	Left	Right
XS	NC53206	NC53207
S	NC53200	NC53201
M	NC53202	NC53203
L	NC53204	NC53205
XL	NC53208	NC53209

**Sizing chart
available online.**

Not made with
natural rubber latex.



Black Tipless Over The Wrist Length		
	Left	Right
XS	NC53220-B	NC53221-B
S	NC53222-B	NC53223-B
M	NC53224-B	NC53225-B
L	NC53226-B	NC53227-B
XL	NC53228-B	NC53229-B

Beige Tipless Over The Wrist Length		
	Left	Right
XS	NC53220	NC53221
S	NC53222	NC53223
M	NC53224	NC53225
L	NC53226	NC53227
XL	NC53228	NC53229

To order, log in at **www.ncmedical.com**
or call **800.821.9319**
Available in Virtual Showroom™

Heavy Compression Gloves

Moderate to heavy compression for the hand and wrist.

- Outside seams prevent unwanted pressure lines.
- Open slit in the cuff for easy application and non-constricting fit.
- Made of 83% nylon and 17% spandex.
- Wrist length measures 3" (7.6 cm) proximal to wrist crease.

Available individually and in pairs.

Full Finger - Singles

	Size	Hand	MP Circumference
NC55320	X-Small	Left	Less than 7" (Less than 18 cm)
NC55321	X-Small	Right	Less than 7" (Less than 18 cm)
NC55322	Small	Left	7" to 8" (18 to 20 cm)
NC55323	Small	Right	7" to 8" (18 to 20 cm)
NC55324	Medium	Left	7½" to 8½" (19 to 22 cm)
NC55325	Medium	Right	7½" to 8½" (19 to 22 cm)
NC55326	Large	Left	8" to 10" (20 to 25 cm)
NC55327	Large	Right	8" to 10" (20 to 25 cm)

Open Finger - Singles

	Size	Hand	MP Circumference
NC55310	X-Small	Left	Less than 7" (Less than 18 cm)
NC55311	X-Small	Right	Less than 7" (Less than 18 cm)
NC55312	Small	Left	7" to 8" (18 to 20 cm)
NC55313	Small	Right	7" to 8" (18 to 20 cm)
NC55314	Medium	Left	7½" to 8½" (19 to 22 cm)
NC55315	Medium	Right	7½" to 8½" (19 to 22 cm)
NC55316	Large	Left	8" to 10" (20 to 25 cm)
NC55317	Large	Right	8" to 10" (20 to 25 cm)

Full Finger - Pairs

	Size		Size
NC55331-XS	X-Small	NC55330-XS	X-Small
NC55331-SM	Small	NC55330-SM	Small
NC55331-MD	Medium	NC55330-MD	Medium
NC55331-LG	Large	NC55330-LG	Large

Machine washable.

Not made with natural rubber latex.



To order, log in at **www.ncmedical.com**
or call **800.821.9319**

Available in Virtual Showroom™



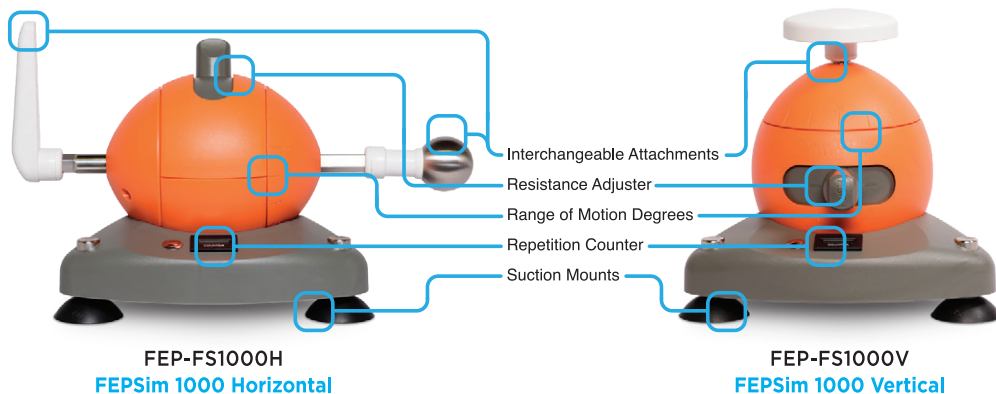
Your **COMPLETE SYSTEM**
for **HAND** and
Upper Extremity
THERAPY

TREAT **MULTIPLE** ISSUES.

Incorporating therapeutic
movements of Flexion, Extension,
Pronation and Supination,
FEPSim® was developed to aid
in the treatment of:

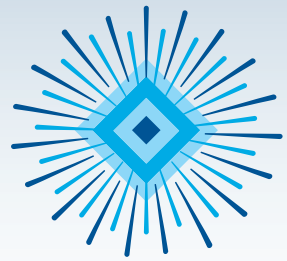
- Forearm, Wrist and Hand Fractures
- Neurological Conditions including Stroke
- Tendinopathies of the Upper Extremity
- Upper Extremity Weakness
- Osteoarthritis
- Complex Regional Pain Syndrome
- Pre and Post-Surgical Upper Extremity Conditions

TWO **UNIQUE** MODELS. ONE **COMPLETE** SYSTEM.



To order, log in at **www.ncmedical.com** or call **800.821.9319**

YOUR **ONE** BRAND FOR DRY NEEDLING!



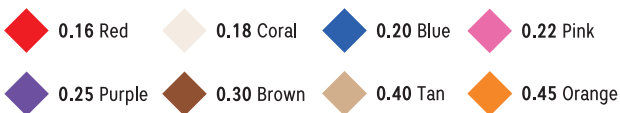
BLUE DIAMOND™
DRY NEEDLES

8 Needle Lengths
8 Needle Diameters
20 Needle Combinations



- Designed with an oversized, etched aluminum handle for superior control.
- Japanese high-grade surgical steel needle body.
- Medical grade silicone lubricated needle for better patient outcomes.
- Each box contains 20 sleeves of 5 needles (100 pieces).

NEEDLE DIAMETER COLOR CHART



0.16 to 0.22mm Diameter

	Diameter	Length
NCBD-1613	0.16mm	13mm
NCBD-1813	0.18mm	13mm
NCBD-2013	0.20mm	13mm
NCBD-2213	0.22mm	13mm

0.25mm Diameter

	Diameter	Length
NCBD-2513	0.25mm	13mm
NCBD-2530	0.25mm	30mm
NCBD-2540	0.25mm	40mm
NCBD-2550	0.25mm	50mm
NCBD-2560	0.25mm	60mm
NCBD-2575	0.25mm	75mm
NCBD-25100	0.25mm	100mm
NCBD-25125	0.25mm	125mm

0.30mm Diameter

	Diameter	Length
NCBD-3030	0.30mm	30mm
NCBD-3040	0.30mm	40mm
NCBD-3050	0.30mm	50mm
NCBD-3060	0.30mm	60mm
NCBD-3075	0.30mm	75mm
NCBD-30100	0.30mm	100mm

0.40 to 0.45mm Diameter

	Diameter	Length
NCBD-40100	0.40mm	100mm
NCBD-45125	0.45mm	125mm

*Oversized, conductive, etched
aluminum handle*



*Double-clamped tube
for easy one-handed release*



To order, log in at **www.ncmedical.com** or call **800.821.9319**

ORTHO FOAM™

High Quality Economical Price

FINGER ORTHOTICS

High-Force

PIP Extension Orthotic

PIP joint and tendon correction.

- Use to correct PIP extension lag, prevent volar plate stiffness, and protect injured extensor tendon.
- Contraindicated for fixed contractures, patients with fragile skin or severe edema.
- Heavy duty (0.047) black, stainless-steel wire construction. Easy to fit and bend wires to adjust extension force.
- Large closed-cell, contoured foam pads for improved fit.
- Not made with natural rubber latex.

Ortho Foam™ High-Force-PIP Extension Orthotic

	Size	DPC to DIP Length
NC85423-1	X-Small (AA)	2¼" (5.7 cm)
NC85423-2	Small (A)	2⅝" (6.7 cm)
NC85423-3	Medium (B)	3" (7.6 cm)
NC85423-4	Large (C)	3½" (8.9 cm)
NC85423-5	X-Large (D)	4" (10 cm)

To size, measure from the distal palmar crease to the distal finger crease (finger extended).



"The Ortho Foam High-Force PIP Extension Orthotic is the only product I've found that provides a superior biomechanics design that protects healing tissue, and maximizes patient comfort and functional outcome."

– Greg Pitts, OTD, MSOTR/L, CHT



To order, log in at **www.ncmedical.com** or call **800.821.9319**

Available in Virtual Showroom™

HOOK SPLINT.®

A sleek, low profile Relative Motion Orthosis.
Relative motion made extremely simple.



Secure a custom fit with
adjustable locking tabs.



Relative motion is a technique which places one or more fingers in a relatively extended or flexed position compared to the others.

Allows the entire hand to stay functional while achieving treatment objectives.

Formed by a metallic band with a smooth silicone finish, and a locking tab on each end.

Designed as a ready-to-use alternative to thermoplastics.

Waterproof, UV coating protects the outer surface and ensures long-term patient comfort.

Indications include:

Extensor tendon/sagittal band repair, PIP extension or flexion contracture, boutonniere deformity, trigger finger, Dupuytren's disease, tendon adhesions, digit pain/stiffness.



SCAN
for VIDEO

	Size	Length	Width
Singles			
NC58774-1	SM/MED	11" (28 cm)	0.4" (1 cm)
NC58775-1	LG	11.8" (30 cm)	0.5" (1.2 cm)
NC58776-1	X-LG	14" (36 cm)	0.5" (1.2 cm)
NC58777-1	MAX	17.3" (44 cm)	0.5" (1.2 cm)
Case of 10			
NC58774-10	SM/MED	11" (28 cm)	0.4" (1 cm)
NC58775-10	LG	11.8" (30 cm)	0.5" (1.2 cm)
NC58776-10	X-LG	14" (36 cm)	0.5" (1.2 cm)
NC58777-10	MAX	17.3" (44 cm)	0.5" (1.2 cm)



To order, log in at **www.ncmedical.com**
or call **800.821.9319**

Available in Virtual Showroom™



Thumb CMC Restriction Splint

Lightweight, comfortable support.

All Comfort Cool® products are made of a unique, perforated neoprene material lined with soft terry cloth featuring anti-microbial technology.

Comfort Cool® products are an innovative combination of design and materials that make them the best choice for comfort and compliance.

The perforated neoprene material offers soft cushioning for comfort; perforations provide ventilation for more breathability while the terry cloth lining helps keep skin cool.

BLACK

Also available in
Pediatric sizes.



Comfort Cool® Thumb CMC Restriction, BLACK

	Size	DPC Circumference	Hand
NC79562	Sm	6" to 7" (15 to 18 cm)	Left
NC79563	Sm	6" to 7" (15 to 18 cm)	Right
NC79556	Sm Plus	6½" to 7¼" (17 to 18 cm)	Left
NC79557	Sm Plus	6½" to 7¼" (17 to 18 cm)	Right
NC79564	Med	7" to 8" (18 to 20 cm)	Left
NC79565	Med	7" to 8" (18 to 20 cm)	Right
NC79558	Med Plus	7¼" to 8¼" (19 to 21 cm)	Left
NC79559	Med Plus	7¼" to 8¼" (19 to 21 cm)	Right
NC79566	Lg	8" to 9" (20 to 23 cm)	Left
NC79567	Lg	8" to 9" (20 to 23 cm)	Right
NC79560	Lg Plus	8¼" to 9½" (21 to 24 cm)	Left
NC79561	Lg Plus	8¼" to 9½" (21 to 24 cm)	Right
NC79550	X-Lg	9" to 10" (23 to 25 cm)	Left
NC79551	X-Lg	9" to 10" (23 to 25 cm)	Right

Provides direct support for the thumb CMC joint while allowing full finger function.

- Patented contoured neoprene strap wraps around the thumb CMC joint and the first metacarpal for direct CMC joint support.
- Specifically designed for osteoarthritis and medial subluxation of the thumb CMC joint.
- Reinforced stitching allows the splint to be trimmed below the thumb MP joint if desired.
- Provides gentle compression that helps relieve thumb discomfort associated with CMC joint arthritis and/or instability, tendinitis or repetitive motion.
- Made of thin, 1/16" (1.6 mm) perforated neoprene with a terry cloth liner that helps keep skin cool and comfortable.
- Plus sizes are a half size bigger in the hand and a full size larger in thumb circumference to accommodate enlarged thumb conditions.
- Not made with natural rubber latex.



Comfort Cool® Thumb CMC Restriction, BEIGE

	Size	DPC Circumference	Hand
NC79580	Sm	6" to 7" (15 to 18 cm)	Left
NC79581	Sm	6" to 7" (15 to 18 cm)	Right
NC79582	Sm Plus	6½" to 7¼" (17 to 18 cm)	Left
NC79583	Sm Plus	6½" to 7¼" (17 to 18 cm)	Right
NC79584	Med	7" to 8" (18 to 20 cm)	Left
NC79585	Med	7" to 8" (18 to 20 cm)	Right
NC79586	Med Plus	7¼" to 8¼" (19 to 21 cm)	Left
NC79587	Med Plus	7¼" to 8¼" (19 to 21 cm)	Right
NC79588	Lg	8" to 9" (20 to 23 cm)	Left
NC79589	Lg	8" to 9" (20 to 23 cm)	Right
NC79590	Lg Plus	8¼" to 9½" (21 to 24 cm)	Left
NC79591	Lg Plus	8¼" to 9½" (21 to 24 cm)	Right
NC79592	X-Lg	9" to 10" (23 to 25 cm)	Left
NC79593	X-Lg	9" to 10" (23 to 25 cm)	Right

US PATENT# 6,702,772

To order, log in at www.ncmedical.com or call 800.821.9319

Available in Virtual Showroom™

Nite-Nite™ Neutral Wrist Support

Provides a comfortable, neutral resting position for the wrist and hand.

Adjustable, removable metal stay helps to immobilize the wrist



- Breathable, nylon-lined palm pillow stays cool for comfort while sleeping.
- Padding below wrist and forearm for added comfort.
- Soft polyester lining extends from forearm to the palm.
- Three closures for an adjustable fit.
- Ventilated to assist in releasing heat and moisture.
- Fits both left or right hand.
- One size fits most.
- Not made with natural rubber latex.

NC12220 Nite-Nite™ Neutral Wrist Support

Breathable palm pillow



**ALL NIGHT
COMFORT AND
PROTECTION**

To order, log in at **www.ncmedical.com** or call **800.821.9319**

Available in Virtual Showroom™

Finger Extension Tube

Reduce flexion contractures.

- The shape and design of the Norco® Finger Extension Tube provides a low stress, high duration capability, ideal for flexion contractures.
- Circumferential pressure helps restrict fluid to aid in edema reduction.
- Tip of the finger should be visible. If needed, trim either end.
- Orthotic should fit comfortably, a firm fit is not required for effective results.
- Not recommended for flexion contractures greater than 50°.
- Made of dense neoprene, polyester, and poly/cotton tape.
- Not made with natural rubber latex.



*Poly/cotton tape
provides comfort and durability.*

	Size	PIP Joint Circumference	
NC79068-1	X-Small	1¾" to 2"	(4.5 to 5.1 cm)
NC79068-2	Small	2" to 2½"	(5.1 to 6.4 cm)
NC79068-3	Medium	2½" to 2¾"	(6.4 to 7.0 cm)
NC79068-4	Red	12¾" to 3"	(7.0 to 7.6 cm)
NC79068-5	Red	3" to 3½"	(7.6 to 8.9 cm)

To order, log in at **www.ncmedical.com** or call **800.821.9319**

Available in Virtual Showroom™



Polyurethane Cold Packs

Premium cold packs conform to body contours at freezing temperatures.

- Designed to withstand heavy clinic use.
- Effective relief of pain, discomfort or swelling after injury for up to 30 minutes.
- Filled with a premium, eco-friendly gel that is pliable at freezing temperatures.
- Guaranteed not to split, crack or leak.
- One year manufacturer warranty.
- Not made with natural rubber latex.



NC70598

Oversize • 22 x 13 in. (56 x 33 cm)



NC70597

Standard • 15 x 12 in. (38 x 30 cm)



NC70599

Neck Contour • 23 x 8 in. (58 x 20 cm)



To order, log in at www.ncmedical.com or call **800.821.9319**

Available in Virtual Showroom™

Wireless "On-the-Go" Technology

Intelligent iontophoresis.



Technologically advanced,
self-contained iontophoresis
drug delivery system.

- Fully self-contained.
- Intelligent biofeedback microprocessor.
- Hydrogel dispersive technology—**no saline required.**
- Patented "shut-off" technology.
- SmartPower™ LED.
- Detects and measures skin impedance to optimize drug delivery.



Active area: 11.4 cm²
Dosage: 40 or 80 mA*min
Skin Adhesive: Hypoallergenic
Maximum Buffer Capacity: Ag/AgCl Stabilizer
Fill Volume: 2.0cc
Smart Power: 6V with intelligent microprocessor
Packaging: 6 ActivaPatch® Kits, Alcohol Wipes,
Patient Information Cards
Treatment time: 2.5 Hours

**80 mA*min dose
in only 2.5 hours.**

**ActivaPatch® IntelliDose™ 2.5
NC89188**

* Study data on file

no saline needed.

To order, log in at www.ncmedical.com or call 800.821.9319

ActivaPatch® IontoGo™ technology.

No external power source to connect, no leadwires,
no dose controller needed, power shut down feature and
no saline required.



Extended wear
patch with an
average drug
delivery dose
of 80 mA*min in
approximately
4 hours.



Extended wear
patch with an
average drug
delivery dose
of 80 mA*min in
approximately
12 hours.



HOW SMART IS YOUR WIRELESS IONTO?

Active area: 11.4 cm²
Dosage: 80 mA*min
Skin Adhesive: Hypoallergenic
Fill Volume: 2.0cc
Packaging: 6 IontoGo™ 4.0,
6 Alcohol Wipes
Treatment Time: 4 Hours

**NO
SALINE
REQUIRED**

**ActivaPatch®
IontoGo™ 4.0
NC89189**

**FULLY
SELF-
CONTAINED**



Active area: 11.4 cm²
Dosage: 80 mA*min
Skin Adhesive: Hypoallergenic
Fill Volume: 2.0cc
Packaging: 6 IontoGo™ 12.0,
6 Alcohol Wipes
Treatment Time: 12 Hours

**NO
SALINE
REQUIRED**

**ActivaPatch®
IontoGo™ 12.0
NC89191**

**FULLY
SELF-
CONTAINED**



* Study data on file

Smarter Iontophoresis™

To order, log in at www.ncmedical.com or call **800.821.9319**

Wired Technology



ADVANTAGES

- Conforms extremely well to uneven treatment sites.
- Maximum strength, precise buffering with new Carbon-Ag/AgCl technology.
- Large ground electrode surface area lowers sensation and increases comfort.
- Highly absorbant drug matrix.
- Large surface adhesion area.



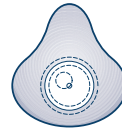
TRIVARION® IS AVAILABLE IN THE FOLLOWING SIZES:



SMALL 1.5cc
NC89180B



MEDIUM 2.0cc
NC89181B



LARGE 3.5cc
NC89182B

TRIVARION®
BUTTERFLY



MEDIUM 2.0cc
NC89183B



ADVANTAGES

- Two controls operate dose and current, with optional push-knob or turn capabilities.
- High-contrast display indicates dose, time and current.
- More power than dual-channel devices for better penetration; up to 80 volts.
- Automatic current ramp-up and ramp-down for maximum comfort. Dose range from 0 to 80 mA-min with 0.1 mA-min increments.
- Time calculations are performed automatically and recalculated if dose and current settings are changed, or with pause/restart.

ActivaDose® II Controller
NC89186

To order, log in at www.ncmedical.com or call 800.821.9319



Buffered Iontophoretic Delivery Kit



Each electrode has a large surface adhesion area.

Variety of sizes and shapes offer great flexibility for iontophoresis treatments.

- Made of non-sensitizing, hypoallergenic, medical grade materials.
- Delivers ions with a pH balance up to 80 mA-min.
- Maximum strength, precise buffering with unique carbon- Ag/AgCl technology.
- The highly absorbent drug matrix has no messy hydrogel.
- Large ground electrode surface area lowers sensation and increases comfort.
- Each kit contains 12 individual treatment sessions that include: one activity electrode; one return electrode; one alcohol prep pad.

Flexible. Thin. Contouring. Comfortable.



Competitor's product is not as thin or flexible.



Advanced, technology-based manufacturing for a thinner, more pliable electrode.



Easy-to-open packaging.

Not made with natural rubber latex.



Small
Square 1.5 cc
NC89250B



Medium
Square 2.5 cc
NC89251B



Large
Square 4.0 cc
NC89252B



Butterfly 2.0 cc
NC89255B

To order, log in at www.ncmedical.com or call **800.821.9319**



THERMOPLASTICS

North Coast Medical provides an array of thermoplastic splinting materials to fit all splinting needs. Our thermoplastic materials exhibit various resistance to stretch, memory and drape to facilitate various custom orthotic fabrication.



Degrees of Resistance to Stretch (RTS)

Degrees of Resistance to Stretch (RTS)				
Resistance to Stretch (RTS)	Minimum			
	RTS	Thermoplastic	Handling Technique	Clinical Application
	Minimum	Clinic®	Minimum RTS: Use light touch or the pull of gravity for an intimate fit. Minimum pressure required to stretch the material.	Minimum RTS: Use for smaller hand and wrist orthoses or when a patient can be placed in the desired position. Ideal for post-surgical and arthritis orthoses.
	Minimum to Moderate	Orfit® Natural NS Orfit® Colors NS Orfit® Classic Orflight™ Encore™ Preferred® Preferred® Black		
	Moderate	Armour™ Vanilla™ Spectrum™ Prism™	Moderate RTS: Use a moderate amount of pull to conform the material to the body part without leaving marks. Requires moderate pressure to stretch the material.	Moderate RTS: Use for all types of orthoses, i.e., fingers, elbow, wrist, ankle, trunk, knee immobilizers and foot drop orthoses. An experienced splinter can use this type of material most effectively. Inexperienced splinters find this material more forgiving and user friendly.
	Moderate to Maximum	Omega™ Max Solaris™	Maximum RTS: Use firm handling to contour. The material may need to be held in place as it cools. Material resists fingerprints and marks. Requires heavy pressure to stretch the material.	Maximum RTS: Use for larger orthoses, i.e., the elbow, shoulder, lower extremity and trunk. Ideal for spasticity or abnormal tone and joint contractures. Inexperienced or heavy-handed splinters will appreciate this characteristic.
Maximum	Omega™ Plus Omega™ Black			
Maximum				

Clinic®



Encore™

Omega™



orfit



For details about our diverse line of thermoplastics, visit us at **www.ncmedical.com**, or call **800.821.9319**



Our most versatile splinting material.

Resistance to Stretch

- **Minimum to moderate resistance to stretch.**
- Tolerates minimum to moderate handling during splint molding.
- Handle on a horizontal plane and form splint in a gravity-assisted position.
- Gentle, smooth motions yield superior results.

Drape

- **Moderate drape** with only light to moderate pressure.
- Contours are quick to form.

Memory

- **Minimum to moderate memory.**
- Splints can be modified a few times without thinning.
- Requires less handling and maintains contours while cooling.

Rigidity

- Molded splints have a **moderate rigidity**.
- A circumferential splint is flexible enough for easy donning and doffing, yet strong enough for immobilization.

Bonding

- The unique **environmentally friendly coating** gives a tacky feel that helps hold the material in place, without thinning or stretching out of control.
- A wet bond will hold but can be pulled apart once cooled.
- Dry heating two surfaces will form a strong bond. For a permanent bond, remove coating with an emery cloth and apply dry heat, then press together firmly. Solvent not required.

Thickness Guide	
1/8"	3.2 mm
3/32"	2.4 mm

Perforation Guide	
• Smooth	
• Perforated, 1%	



Surface Finish

- **Moderate resistance to fingerprints** and resists showing stains.
- **Smooth, self-sealing** cut edges remain sealed even after reheating.

Applications

- **1/8" Preferred®** can be used for almost any splinting application. Use for dynamic and static splinting; for adult and pediatric positioning; and for post-burn and post-surgical care.
- **3/32" Preferred®** is thin and lightweight, yet strong, and can be used for forearm and hand-based splints. Ideal for arthritis splints, post-operative splints, and for pediatric splints when children are able to cooperate.

Working Time (1/8")

- Allows three to five minutes of molding time after softening in 160°F (71°C) water.

Not made with natural rubber latex.

1/8" (3.2 mm) Preferred® Smooth

NC12790	18" x 24" (45 x 60 cm)	Case (4)
NC12790-1	18" x 24" (45 x 60 cm)	Sheet (1)
NC12791	24" x 36" (60 x 90 cm)	Case (2)

1/8" (3.2 mm) Preferred® Perforated 1%

NC12793	18" x 24" (45 x 60 cm)	Case (4)
NC12793-1	18" x 24" (45 x 60 cm)	Sheet (1)
NC12792	24" x 36" (60 x 90 cm)	Case (2)

3/32" (2.4 mm) Preferred® Smooth

NC12983	18" x 24" (45 x 60 cm)	Case (4)
NC12983-1	18" x 24" (45 x 60 cm)	Sheet (1)

3/32" (2.4 mm) Preferred® Perforated 1%

NC12984	18" x 24" (45 x 60 cm)	Case (4)
NC12984-1	18" x 24" (45 x 60 cm)	Sheet (1)

Performance characteristics similar to TailorSplint®

TailorSplint is a registered trademark of Performance Health Holdings, Inc.

To order, log in at **www.ncmedical.com** or call **800.821.9319**

Preferred® Black



*Our most versatile, splinting material
can be used by novice or experienced users alike.*

Resistance to Stretch

- Minimum to moderate resistance to stretch.
- Tolerates minimum to moderate handling during splint molding.
- Handle on a horizontal plane and form splint in a gravity-assisted position.
- Gentle, smooth motions yield superior results.

Drape

- **Moderate drape** with only light to moderate pressure.
- Contours are quick to form.

Memory

- **Minimum to moderate memory.**
- Splints can be modified a few times without thinning.
- Requires less handling and maintains contours while cooling.

Rigidity

- Molded splints have a **moderate rigidity.**
- A circumferential splint is flexible enough for easy donning and doffing, yet strong enough for immobilization.

Bonding

- The unique **environmentally friendly coating** gives a tacky feel that helps hold the material in place, without thinning or stretching out of control.
- A wet bond will hold but can be pulled apart once cooled.
- Dry heating two surfaces will form a strong bond.
For a permanent bond, remove coating with an emery cloth and apply dry heat, then press together firmly.
Solvent not required.

Surface Finish

- **Moderate resistance to fingerprints** and resists showing stains.
- **Smooth, self-sealing** cut edges remain sealed even after reheating.

Applications

- **1/8" Preferred® Black** can be used for almost any splinting application. Use for dynamic and static splinting; for adult and pediatric positioning; and for post-burn and post-surgical care.
- **3/32" Preferred® Black** is thin and lightweight, yet strong, and can be used for forearm and hand-based splints. Ideal for arthritis splints, post-operative splints, and for pediatric splints.

Working Time (1/8")

- Allows three to five minutes of molding time after softening in 160° F (71° C) water.

Not made with natural rubber latex.

1/8" (3.2 mm) Preferred® Black Smooth

NC12813	18" x 24" (46 x 61 cm)	Case (4)
NC12813-1	18" x 24" (46 x 61 cm)	Sheet (1)

1/8" (3.2 mm) Preferred® Black Perforated 1%

NC12814	18" x 24" (46 x 61 cm)	Case (4)
NC12814-1	18" x 24" (46 x 61 cm)	Sheet (1)

3/32" (2.4 mm) Preferred® Black Smooth

NC12815	18" x 24" (46 x 61 cm)	Case (4)
NC12815-1	18" x 24" (46 x 61 cm)	Sheet (1)

3/32" (2.4 mm) Preferred® Black Perforated 1%

NC12816	18" x 24" (46 x 61 cm)	Case (4)
NC12816-1	18" x 24" (46 x 61 cm)	Sheet (1)

Thickness Guide

1/8"	3.2 mm
3/32"	2.4 mm

Perforation Guide

- Smooth
- Perforated, 1%



**Performance characteristics
similar to TailorSplint® Black**

TailorSplint is a registered trademark of Performance Health Holdings, Inc.

To order, log in at **www.ncmedical.com** or call **800.821.9319**



**Lightweight, Kevlar®
fiber-based
thermoplastic is
rigid, long-lasting
and tough.**



Resistance to Stretch

- Moderate resistance to stretch.

Drape

- Moderate drape for excellent fit and conformability.

Memory

- 100% memory for easy remolding.

Rigidity

- Maximum rigidity. Orthoses will hold their shape against hypertonicity.

Bonding

- **Coated material.** Provides a tacky surface when warm and bonds without the need for solvents.
- A firm bond is achieved by roughing one of the surfaces lightly with sandpaper, or using the blade of scissors to score the surface. Use a heat gun to heat the surface until thermoplastic is tacky, then press both surfaces together until thermoplastic has cooled.
- For a permanent bond, score and heat both surfaces with a heat gun, then press together.

Surface Finish

- Resists fingerprints.
- Smooth, self-sealing edges remain sealed even after cutting and reheating.

Applications

- **1/8" Armour™** can be used for arm, wrist, and circumferential splinting applications. Ideal for abnormal tone or joint contractures.
- **3/32" Armour™** is thin and lightweight, yet strong and durable. Ideal for forearm, hand, and finger-based splints.

Working Time (1/8")

- Allows two to three minutes of molding time after softening in 160° (71° C) water.

Not made with natural rubber latex.



KEVLAR® is a registered trademark of El DuPont de Nemours & Co.



Thickness Guide

1/8"	3.2 mm
3/32"	2.4 mm

Perforation Guide

- Smooth
- Perforated, 19%

19% Perforation



To order, log in at **www.ncmedical.com** or call **800.821.9319**



The
personal fit

Orfit® Multifit® NS

From a static wrist orthosis to a complex dynamic orthosis. Multifit® NS can address all of your fabrication needs across pathologies and across patients while offering maximum ease of use.

3/32" (2.4 mm) Orfit® Multifit® NS, Smooth

NC81380	Pearl White	18" x 24" (45 x 60 cm)	Sheet (1)
NC81382	Black	18" x 24" (45 x 60 cm)	Sheet (1)

3/32" (2.4 mm) Orfit® Multifit® Mini Perforated

NC81381	Pearl White	18" x 24" (45 x 60 cm)	Sheet (1)
NC81383	Black	18" x 24" (45 x 60 cm)	Sheet (1)

1/8" (3.2 mm) Orfit® Multifit® NS, Smooth

NC81384	Pearl White	18" x 24" (45 x 60 cm)	Sheet (1)
NC81386	Black	18" x 24" (45 x 60 cm)	Sheet (1)

1/8" (3.2 mm) Orfit® Multifit® Macro Perforated

NC81385	Pearl White	18" x 24" (45 x 60 cm)	Sheet (1)
NC81387	Black	18" x 24" (45 x 60 cm)	Sheet (1)

Not made with natural rubber latex.



- ◉ **RTS:**
Moderate
- ◉ **DRAPE:**
Maximum
- ◉ **MEMORY:**
Low
- ◉ **RIGIDITY:**
High

Thickness Guide

1/8"		3.2 mm
3/32"		2.4 mm

Perforation Guide

- Smooth
- Micro Perforated, 42%
- Mini Perforated, 19%
- Macro Perforated, 1%



To order, log in at **www.ncmedical.com**
or call **800.821.9319**

Outriggers

Phoenix[®] & Base 2[™]

Back in Stock!

- For fabrication of dynamic and static progressive splints.
- Available in convenient kits or separate components to create customized contoured outriggers.
- Lightweight aluminum components can be bent by hand or with pliers.
- Wing nuts, thumb screws and line guides made from nylon and stainless steel.
- Finger slings are made of ultra-suede and are available pre-tied or with grommets.



Phoenix[®] and Base 2[™] Outrigger Kits

		PCS
NC12820	Base 2 Single Finger Extension Kit	7
NC12821	Base 2 Kit #2 Multi Digit Extension Kit	14
NC12840	Base 2 Outrigger Starter Kit	63
NC12760	Phoenix Outrigger Kit	15
NC12763	Phoenix Extended Outrigger Kit	12

Base 2[™] Outrigger Aluminum Components

		Length	QTY
NC12830-3	Straight Aluminum	2" (5 cm)	2
NC12830-1	Straight Aluminum	5" (13 cm)	3
NC12830-0	Straight Aluminum	7" (18 cm)	3
NC12830-2	Curved Multi-digit	4" (10 cm)	2
NC12830-10	Curved Outrigger	5" (13 cm)	3
NC12830-6	Curved Outrigger	7" (18 cm)	3
NC12830-8	Curved Outrigger w/foot	5" (13 cm)	3
NC12830-7	Curved Outrigger w/foot	7" (18 cm)	3

Outrigger Accessoriess

		Length	QTY
NC12338	Finger Slings w/ Grommets	2" (5 cm)	10
NC12397	Finger Slings w/ Grommets	5" (8 cm)	10
NC12410	Finger Slings w/ Grommets	3.5" (9 cm)	10
NC12398	Finger Slings w/ Grommets	4" (10 cm)	10
NC12399	Ultra-Suede Pre-tied Sling	3" (8 cm)	10
NC12401	Ultra-Suede Pre-tied Sling	4" (10 cm)	10
NC12830-4	Base 2 Accessories Kit		13
NC12762	Rubber Band Posts (Thumb screws)		10
NC12830-9	Wing Nuts		5
NC12830-11	All Plastic Line Guides		10
NC12494	Outrigger Line Connectors		100
NC12760-1	Phoenix Slotted Pulleys w/hex wrench		5
NC12760-2	Radial Outrigger Bar		10

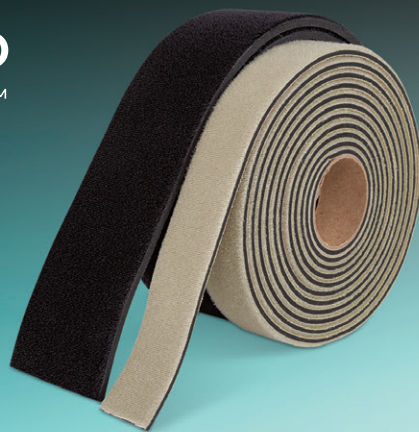


To order, log in at www.ncmedical.com or call 800.821.9319

NEOLOOP™

Straps and Sheets

Ideal for fabricating custom positioning splints, devices or padded handles.



- Features plush loop pile on one side and nylon lining on the other.
- Loop pile covering easily adheres to hook fasteners for strapping applications.
- Use hook strap to secure Neoloop™ around a body part, device or handle.
- Available in beige or black **straps** and **sheets**.



Not made with natural rubber latex.

Neoloop™ Sheets, Beige

	Thickness	Dimensions
NC15757	1/8" (3.2 mm)	6" x 38" (15 x 97 cm)
NC15758	1/8" (3.2 mm)	12" x 18" (31 x 46 cm)
NC15769	1/8" (3.2 mm)	18" x 24" (46 x 61 cm)
NC15768	1/16" (1.6 mm)	18" x 24" (46 x 61 cm)

Neoloop™ Sheets, Black

	Thickness	Dimensions
NC15757-B	1/8" (3.2 mm)	6" x 38" (15 x 97 cm)
NC15758-B	1/8" (3.2 mm)	12" x 18" (31 x 46 cm)
NC15769-B	1/8" (3.2 mm)	18" x 24" (46 x 61 cm)
NC15768-B	1/16" (1.6 mm)	18" x 24" (46 x 61 cm)

Neoloop™ Straps, Beige - 10 ft (3 m) Roll

	Thickness	Width
NC15759	1/8" (3.2 mm)	1" (2.5 cm)
NC15760	1/8" (3.2 mm)	2" (5 cm)
NC79610	1/16" (1.6 mm)	1" (2.5 cm)
NC79611	1/16" (1.6 mm)	2" (5 cm)

Neoloop™ Straps, Black - 10 ft (3 m) Roll

	Thickness	Width
NC15759-B	1/8" (3.2 mm)	1" (2.5 cm)
NC15760-B	1/8" (3.2 mm)	2" (5 cm)
NC79610-B	1/16" (1.6 mm)	1" (2.5 cm)
NC79611-B	1/16" (1.6 mm)	2" (5 cm)

To order, log in at www.ncmedical.com or call **800.821.9319**

Self-Adhesive Dema Wrap®

**Economical and lightweight
cohesive wrap provides excellent
support and compression.**

*Make quick
and easy light
compression
wraps.*



- Use to support sprains/strains and to apply compression for edema restriction.
- Use as a bandage and as a replacement for tape when securing dressings/catheters.
- Sticks to itself and stays in place without irritating the skin.
- Variety of width options ensure an ideal fit for select areas.
- Rolls measure 5 yds. (4.6 m) long.
- Beige color is available in both Standard and Latex Free* varieties.
- All Color Packs are Latex Free*.

*Secure splints while providing
edema compression.*



*Self adheres and will not
stick to skin, hair or clothing.*

** Not made
with natural
rubber latex.*

No scissors required.



Standard Beige

Width

NC68500	1" (2.5 cm)	30 Rolls
NC68501	2" (5.1 cm)	36 Rolls
NC68502	3" (7.6 cm)	24 Rolls
NC68503	4" (10 cm)	18 Rolls

Latex Free* Beige

Width

NC68510	1" (2.5 cm)	30 Rolls
NC68511	2" (5.1 cm)	36 Rolls
NC68514	3" (7.6 cm)	24 rolls

Latex Free* Color Pack

Width

NC68512	1" (2.5 cm)	30 Rolls
NC68513	2" (5.1 cm)	36 Rolls
NC68515	3" (7.6 cm)	24 Rolls



Latex Free Color Packs are
available in 1", 2", and 3" widths.*

To order, log in at
www.ncmedical.com or call **800.821.9319**



Virtual Showroom

E-COMMERCE AFFILIATE PROGRAM

Join the Affiliate Program. Get an instant **online store**.



Virtual Showroom™ is an easy to install, fully-functional e-commerce platform designed specifically for rehab healthcare providers. Virtual Showroom™ integrates seamlessly into your existing website and gives your clients direct access to the products their therapists have recommended. It is simple to create your own Virtual Showroom™ and it requires no programming skills.

Highlights:

- Clients stay on your website when shopping for recommended products.
- Customizable: Select Featured Products, Categories, and color-match to your website.
 - Adapts to mobile devices and tablets.

Benefits:

- No annual, monthly, or transaction fees.
 - No inventory required.
- Up to 25% commissions on all product sales.
 - Competitive prices for all products.
- North Coast handles all customer service inquiries.
- Full product warranties and our 100% Satisfaction & Return Policy for all sales.

Sign-up at **www.mynpcmstore.com/virtual-showroom**
or call **800.821.9319**

Rx CartTM 2.0 *As easy as writing a prescription.*

RxCartTM 2.0 allows the therapist to specify the right products, with the proper size, weight, resistance level, and brand. Your clients no longer need to wander aimlessly through a confusing website hoping to get the right products with proper fitment. This puts the expert decisions in the hands of you, the expert.

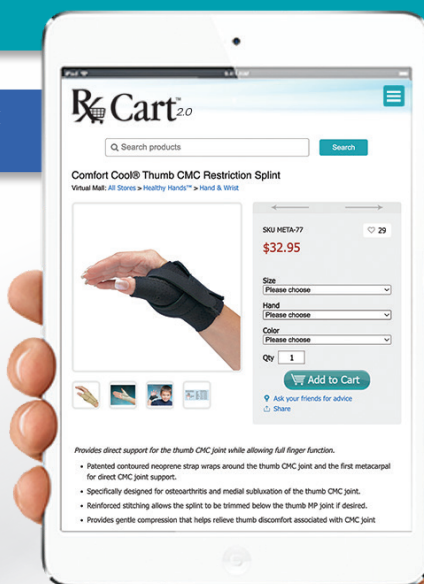
Harness the power of the therapist recommendation.

Simple to use on a tablet or smartphone while consulting with patients.

Makes it easy for your patient to get the specific therapy products you recommend.

Features include:

- Analytics to track sales to the location and the therapist.
- Save the product bundles you recommend most.
- View status, send reminders for ignored RxCarts.
- Organizations can proactively track and influence therapist's behavior, and reward those who are using the tools best.
- Up to 25% commissions on all product sales.



You specify the products. Your patient clicks a link in their email.
In just a few easy steps, patients purchase your list of recommended products.

Bring the power of Virtual ShowroomTM into your daily practice.

Sign-up at www.myncmstore.com/rx-cart
or call 800.821.9319



Our Company

For 50 years, North Coast Medical has maintained an outstanding reputation in the global rehabilitation market. We are more than just a wholesale distributor and manufacturer of products, equipment and supplies. North Coast is a strategic supply chain partner, providing innovative opportunities for our customers and business partners.

Now a second-generation family business, we continue to invest in our future while steadfastly adhering to strong ethics and integrity. We invite you to browse our website and discover what is *more than expected* at North Coast Medical.

Thousands of medical and rehabilitative products are available at www.ncmedical.com – log in to view your professional pricing. Orders can also be placed by phone at **800.821.9319**, or by fax at **877.213.9300**.

Proprietary Brands

Throughout the years, we've developed and/or acquired medical devices with trademarks and brand names including:



North Coast

MEDICAL & REHABILITATION PRODUCTS

More Than Expected™