



OPERATION

WELLNESS

VOL.1

**LOGISTICS & SUPPLY  
PROSTHETICS &  
SENSORY AIDS FOR**

- ★ REHABILITATION
- ★ PHYSICAL THERAPY
- ★ OCCUPATIONAL THERAPY
- ★ PODIATRY
- ★ CHIROPRACTIC

**CERTIFIED  
SMALL  
BUSINESS**



U.S. Small Business  
Administration

## ABOUT US



North Coast Medical Founders  
*Lori Biehl and the late Frank J. Biehl,  
with son and current CEO, Mark E. Biehl.*

**North Coast Medical** is committed to offering outstanding customer service and exceptional quality products at competitive prices. Through two generations, beginning with founders Lori Biehl and the late Frank J. Biehl, and now led by their son, Mark E. Biehl, the Biehl family has envisioned assisting individuals with independence and comfort in daily living for over four decades. Providing products to meet those needs is an ever-changing process as new products are developed annually.

Since the company's beginning, the level of industry commitment to rehabilitation has been unwavering. This core value and dedication to community are still at the foundation of everything we do, and now extends globally.



North Coast is dedicated to supporting our nation's military heroes who are transitioning back into society with new life challenges. **Mission: Next Step** is our way of giving back. We are a proud supporter of the **Warrior Foundation - Freedom Station** (San Diego, CA), a transitional living environment that fills the void servicemen and women face as they return to life outside of the military. This organization assists, honors and supports veterans who have bravely served and sacrificed for our country.



North Coast has fulfilled a **\$100,000 pledge** to the Freedom Station through **Mission: Next Step**, and recently made a **second \$100,000 pledge** by donating 5% of all Department of Defense and V.A. sales to this valuable organization. To learn more about the Warrior Foundation - Freedom Station, please visit:

[www.ncmedical.com/freedom-station](http://www.ncmedical.com/freedom-station)  
[www.warriorfoundation.org](http://www.warriorfoundation.org)

*Join us in supporting our nation's heroes  
by ordering your therapy products, supplies  
and sensory aids from North Coast Medical.*





# TABLE OF CONTENTS

**2 - 11**

## **PHYSICAL THERAPY**

Band & Tubing  
Foam Rolls  
Self-Help Tools  
Taping

**12 - 27**

## **ADL**

Dining  
Dressing  
Reachers  
Hip Kits  
Hygiene

**28 - 31**

## **MOBILITY**

Wheelchair Accessories  
Knee Walker  
Gait Belts

**32 - 47**

## **HAND THERAPY**

Padding  
Orthotics  
Splint Pan  
Thermoplastics  
Orthopedics  
Hand Putty

**48 - 59**

## **MODALITIES**

Iontophoresis  
Electrodes  
Sensory Evaluation  
Dry Needles  
Hot / Cold Therapy  
Moist Heat  
Traction

**60 - 69**

## **FOOT ORTHOTICS**

Heel Lifts  
Orthotics & Insoles

The products shown in this catalog are an abbreviated selection of our full product offering.

To view all of our products, visit  
[www.ncmedical.com](http://www.ncmedical.com)

# Rainbow™

LATEX FREE  
EXERCISE TUBING

**Consistent Resistance  
Poundage Force**  
*while stretching!*



LEVEL 1

LEVEL 2

LEVEL 3

LEVEL 4

LEVEL 5



Color-Coded Resistance Levels with **Functional Colors™**

• No Residue • No Powder • No Odor



## Rainbow™ Latex-Free\* Exercise Tubing

### Professional

#### 100 ft Box

One 100 ft (30m) roll

NC95421-100	Level 1 - Light	Orange
NC95422-100	Level 2 - Medium	Pink
NC95423-100	Level 3 - Heavy	Green
NC95424-100	Level 4 - Extra Heavy	Blue
NC95425-100	Level 5 - Super Heavy	Purple

### Retail

#### Multipacks

Three 5 ft (1.5m) lengths of tubing per pack

NC95430	Light Resistance Pack	Orange, Pink, Green	Levels 1, 2 and 3
NC95431	Heavy Resistance Pack	Green, Blue, Purple	Levels 3, 4 and 5



\*Not made with natural rubber latex.

To order, log in at  
**www.ncmedical.com** or call **800.821.9319**

# Rainbow™

LATEX FREE  
EXERCISE BAND

A premium  
**Latex Free\* Exercise Band**  
without a premium price!

LEVEL 1

LEVEL 2

LEVEL 3

LEVEL 4

LEVEL 5



Color-Coded Resistance Levels with **Functional Colors™**

- No Residue • No Powder • No Odor



## Rainbow™ Latex-Free\* Exercise Band

### Professional

#### 50 yd Box

One 50 yd (45 m) roll

NC95401-50	Level 1 - Light	Orange
NC95402-50	Level 2 - Medium	Pink
NC95403-50	Level 3 - Heavy	Green
NC95404-50	Level 4 - Extra Heavy	Blue
NC95405-50	Level 5 - Super Heavy	Purple

### Retail

#### Multipacks - Three 5 ft (1.5m) lengths of tubing per pack

NC95410	Light Resistance Pack	Orange, Pink, Green	Levels 1, 2 and 3
NC95411	Heavy Resistance Pack	Green, Blue, Purple	Levels 3, 4 and 5

#### Complete Multipack - Five 5 ft (1.5m) lengths of tubing per pack

NC95400	Orange, Pink, Green, Blue, Purple	Levels 1, 2, 3, 4 and 5
---------	-----------------------------------	-------------------------



\*Not made with natural rubber latex.

To order, log in at  
**www.ncmedical.com** or call **800.821.9319**



0

1

2

3

4

5

6

7

## Norco® LEVELS™ EXERCISE BAND

## 8 Level System

*Number-coded, clearly marked resistance levels for easier identification.*

- 100% natural latex band without the negative aspects associated with other latex bands.
- Bands consistently test below detection levels for allergens, resulting in a smooth and clean band.
- Resistance levels are printed at 2' (.61 m) intervals for easy identification and cutting.
- **Rolls** measure 50 yards (45 m).
- **Dispenser Box** contains (30) individually wrapped 5 ft. (1.5 m) bands.
- Also available in **Light** and **Heavy Resistance Multipacks**.



### 50 yard Roll (45 m)

NC91220-50	Level 0	White
NC91221-50	Level 1	Light Blue
NC91222-50	Level 2	Turquoise
NC91223-50	Level 3	Light Green
NC91224-50	Level 4	Dark Blue
NC91225-50	Level 5	Teal
NC91226-50	Level 6	Dark Green
NC91227-50	Level 7	Gray

### Dispenser Box (30 individual bands)

NC91220-30	Level 0	White
NC91221-30	Level 1	Light Blue
NC91222-30	Level 2	Turquoise
NC91223-30	Level 3	Light Green
NC91224-30	Level 4	Dark Blue
NC91225-30	Level 5	Teal
NC91226-30	Level 6	Dark Green
NC91227-30	Level 7	Gray

### Multipacks - Three 6 ft (1.8 m) lengths of band per pack

NC91229	Light Resistance Pack	Levels 1, 2, 3
NC91230	Heavy Resistance Pack	Levels 3, 4, 5

*Manufactured using one of the most rigorous cleansing processes in the industry.*

To order, log in at [www.ncmedical.com](http://www.ncmedical.com) or call 800.821.9319

1

2

3

4

5

6

## Norco® LEVELS™ EXERCISE TUBING

## 6 Level System

*Ideal for active resistive,  
strengthening exercises.*

- Tubing is available in six color-coded resistances.
- Consistently tests below detection levels for allergens, resulting in a smooth and clean product.
- Each resistance level can be used independently or as part of a progressive exercise program.
- Tubing can be knotted to form a loop, or used with handles.
- Resistance levels are printed at 2' (.61 m) intervals for easy identification and to help determine cut length.
- Convenient **Dispenser Box** contains 100' (30 m) of tubing.

*Manufactured using  
one of the most  
rigorous cleansing  
processes in the  
industry.*

*Tubing allows for targeting of  
small muscle groups for  
precise strengthening,  
such as the wrist flexors.*

### 100 foot (30 m) Dispenser Box

NC91101-100	Level 1	Light Blue
NC91102-100	Level 2	Turquoise
NC91103-100	Level 3	Light Green
NC91104-100	Level 4	Dark Blue
NC91105-100	Level 5	Teal
NC91106-100	Level 6	Dark Green

To order, log in at [www.ncmedical.com](http://www.ncmedical.com) or call **800.821.9319**

# Foam Rolls

Lightweight, portable bolsters are ideal for home programs.



- Great for improving dynamic stabilization, joint mobilization, weight bearing for upper and lower extremities, relaxation, righting and equilibrium reactions.
- Can be used for sitting, standing, supine, side-lying, prone and all-fours exercises.
- **Full Round** rolls available in 3", 4" or 6" (7.6, 10 or 15 cm) diameters.
- **Half Round** rolls measures 6" on the flat side x 3" tall (15 x 7.6 cm).
- Available in 12", 36", or 48" (30, 91, or 122 cm) lengths.

Full Round	Length	Diameter
NC64641-312	12" (30 cm)	3" (7.6 cm)
NC64641-336	36" (91 cm)	3" (7.6 cm)
NC64641-348	48" (122 cm)	3" (7.6 cm)
NC64641-412	12" (30 cm)	4" (10 cm)
NC64641-436	36" (91 cm)	4" (10 cm)
NC64641-448	48" (122 cm)	4" (10 cm)
NC64641-612	12" (30 cm)	6" (15 cm)
NC64641-636	36" (91 cm)	6" (15 cm)
NC64641-648	48" (122 cm)	6" (15 cm)

Half Round	Length	Height
NC64640-312	12" (30 cm)	3" (7.6 cm)
NC64640-336	36" (91 cm)	3" (7.6 cm)
NC64640-348	48" (122 cm)	3" (7.6 cm)

To order, log in at [www.ncmedical.com](http://www.ncmedical.com) or call 800.821.9319





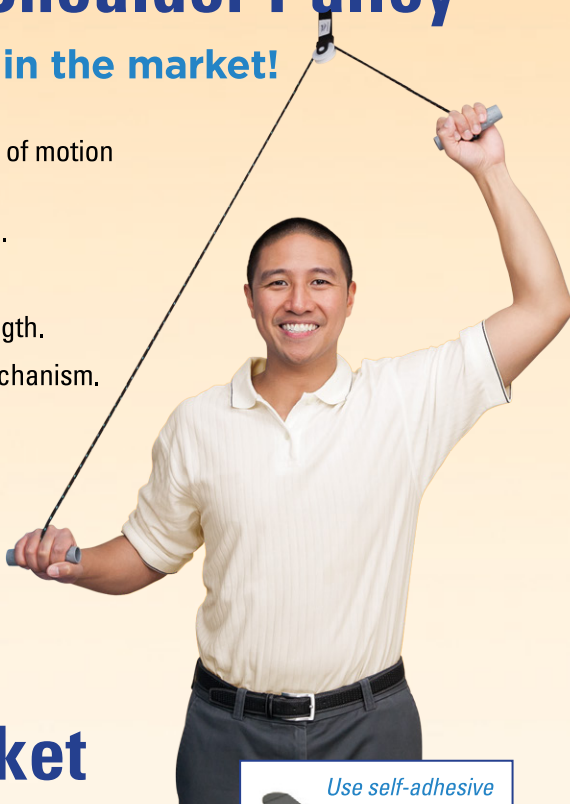
# Economy Shoulder Pulley

Highest quality in the market!

- Increase shoulder range of motion in the clinic or at home.
- Large, easy-grip handles.
- Non-slip web door strap.
- Simple to adjust cord length.
- Smooth action pulley mechanism.



**Economy  
Shoulder Pulley**  
NC52080



# Universal Door Bracket

**Easy on, easy off  
over-the-door bracket.**

- Bracket can remain in place on the top of the door, ready for the next exercise.
- Made of smooth, coated metal to help prevent door scratches.
- Bracket width is 1<sup>3</sup>/<sub>4</sub>" (4 cm), which fits over commercial and most standard doors.
- Includes two EVA foam pads which help secure the bracket around doors with narrow widths.



*Use self-adhesive  
foam pads for  
narrower  
door widths.*



**1-3/4"**  
(4.4 cm)



NC52081 **Universal Door Bracket**

To order, log in at [www.ncmedical.com](http://www.ncmedical.com) or call **800.821.9319**



# Stretch Strap

Safe and effective deep, gradual stretching.



**ISOTONICS**  
**ISOMETRICS**  
**PROLONGED STRETCH**  
**INCREASED R.O.M.**  
**FLEXIBILITY**

- Designed with ten multi-positioned grip loops for use in deep, gradual stretching of the major muscle groups.
- Ideal for individuals seeking unassisted or assisted stretching exercises to relieve sore or achy muscles.
- Stretch more safely and effectively than is possible unaided.
- Grip loops can be used to set stretch improvement goals.
- Made of non-stretch webbing.
- Machine washable.
- Not made with natural rubber latex.

*Retail ready packaging includes an instruction booklet for quick reference.*



Stretch Strap	Model	Color	Length
NC84527	Standard	Purple	6' 4" (1.9 m) for people under 6' (1.8 m)
NC84528	Long	Blue	7' 5" (2.3 m) for people over 6' (1.8 m)

To order, log in at [www.ncmedical.com](http://www.ncmedical.com) or call 800.821.9319

## Common Trigger Points



# BODYtool™

## TRIGGER POINT SELF MASSAGER

**GREAT FOR: NECK, SHOULDERS,  
BACK, ARMS, LEGS, TORSO & FEET!**



- Designed to target trigger points and muscle knots in the body to assist with temporary release of muscular tension.
- **Textured grip handles** allow better control for effectively targeting trigger points.
- Features **seven large knobs**, strategically placed to control pressure to the desired areas for trigger point release and breaking up of myofascial tissue.

**NC69700 Body Tool™**

*Illustrated, easy-to-follow  
instruction guide and  
poster included!*



To order, log in at [www.ncmedical.com](http://www.ncmedical.com) or call **800.821.9319**



ARM YOUR MUSCLE

BEAT THE PAIN

# MUSCLE AIDTAPE™

*Longer lasting, skin-friendly support.*

- Relieve muscle pain, soreness and cramping.
- Provide support for joints and muscles.
- Reduce swelling, inflammation and bruising.
- Increase blood circulation/flow.
- Not made with natural rubber latex.

## Available in:

**Single rolls:** 2" x 16' (5 cm x 5 m)

**Bulk rolls:** 2" x 105' (5 cm x 32 m)

**Precuts:** 2" x 10" (5 cm x 25.5 cm)

**Strengthen Performance.**  
**Relieve Muscle Pain.**  
**Facilitate Rapid Recovery.**

Display Cartons (1)	Color	Quantity
---------------------	-------	----------

MT1642-MVBG	Beige	6 Rolls
MT1642-JDBK	Black	6 Rolls
MT1642-RPRD	Red	6 Rolls
MT1642-RPOR	Orange	6 Rolls
MT1642-MVPL	Purple	6 Rolls
MT1642-MVPK	Pink	6 Rolls
MT1642-JDNB	Navy Blue	6 Rolls
MT1642-JDBL	Blue	6 Rolls
MT1642-MVYW	Yellow	6 Rolls
MT1642-RPWH	White	6 Rolls
MT1642-RPUS	USA	6 Rolls

*See product listings  
for available colors.*

Precuts (20)	Color
--------------	-------

MTPCBG-20	Beige
MTPCBK-20	Black
MTPCBL-20	Blue
MTPCUS-20	USA

Bulk Precuts (128)	Color
--------------------	-------

MTPCBG-128	Beige
MTPCBK-128	Black
MTPCUS-128	USA

Bulk Rolls (1)	Color
----------------	-------

MT1052-BG-BULK	Beige
MT1052-BK-BULK	Black
MT1052-RD-BULK	Red
MT1052-NB-BULK	Navy Blue
MT1052-BL-BULK	Blue

To order, log in at [www.ncmedical.com](http://www.ncmedical.com) or call 800.821.9319

# BandIT®

## Tennis Elbow Strap

**Helps relieve pain without constricting movement.**

- BandIT® Tennis Elbow Strap is useful for treating medial or lateral epicondylitis.
- Unique design compresses across the flexor, extensor and supinator muscles.
- Allows movement without compromising circulation.
- One adjustable size fits most forearms with a minimum circumference of 8" (20cm).



NC15890 BandIT® Tennis Elbow Strap

# WRISTWIDGET®

**A revolutionary way to treat ulnar-sided wrist pain and TFCC tears.**

- Designed by a certified hand therapist to reduce wrist pain associated with grip, wrist rotation and weight bearing.
- Indicated for ulnar-sided wrist pain, TFCC injuries, sports-related wrist injuries, and ECU subluxation.
- Clinically proven to reduce wrist pain and increase wrist strength.
- Made of high quality, non-elastic material that fits comfortably around the wrist.
- The hook and loop mechanism does not interfere with wrist motion and holds the wrist securely in place without irritation to the skin or wrist joint.

NC16220  
WristWidget®

*Universal size fits  
left or right hand.*

To order, log in at [www.ncmedical.com](http://www.ncmedical.com) or call **800.821.9319**

OXO

# GOOD GRIPS® Utensils

*Large, cushioned grip helps keep the utensil in the hand – even when wet.*



- Stainless steel utensils feature built-up handles.
- Handle material is soft and latex-free\* with flexible ribbing that adapts to any grip.

- The special twist built into the metal shaft allows utensils to be bent to any angle.

- Dishwasher safe and BPA-free.

**Serrated Rocker Knife**  
*Ideal for cutting meats*

NC65591	Fork
NC65595	Small Spoon
NC65593	Teaspoon
NC65594	Tablespoon
NC65590	Souper Spoon™
NC65592	Rocker Knife
NC65585	Serrated Rocker Knife
NC65599	Good Grips® Utensils Set



**Non-Slip  
Soft Grip**

Oxo® and Good Grips®  
are manufactured by  
North Coast Medical, Inc.  
under license from  
Helen of Troy Limited,  
US Patent Number RE37,190

\* Not made with natural rubber latex.

**To order, log in at [www.ncmedical.com](http://www.ncmedical.com)  
or call 800.821.9319**



OXO

GOOD GRIPS®

Non-Slip  
Soft Grip

# Weighted Utensils

**Extra weight helps minimize tremors while eating.**

- Built-up handle has 6 oz. (170 g) of added weight.
- Ideal for persons with limited hand control, Parkinson's disease or spasticity.
- **Utensil Set** includes all 5 utensils.

NC65560	Fork
NC65561	Teaspoon
NC65562	Tablespoon
NC65564	Souper Spoon™
NC65565	Rocker Knife
NC65560-S	Utensil Set (5)



\* Not made with natural rubber latex.

All Weighted and Coated utensils provide the same benefits as the standard Good Grips® utensils.

# Coated Spoons

**Helpful for those with biting reflexes or limited coordination.**

- Silicone coating helps to protect teeth and lips from injury.
- Ideal for persons with spasticity, limited hand-to-mouth reach or impaired hand control.
- The **Spoon Set** includes three coated spoons: Small Spoon, Teaspoon and Tablespoon.



NC65596	Small Spoon
NC65597	Teaspoon
NC65598	Tablespoon
NC65600	Spoon Set (3)

\* Not made with natural rubber latex.

Oxo® and Good Grips® are manufactured by North Coast Medical, Inc.  
under license from Helen of Troy Limited, US Patent Number RE37,190

To order, log in at [www.ncmedical.com](http://www.ncmedical.com)  
or call **800.821.9319**



# Dressing Pal™

*Allows those with limited mobility to dress themselves more easily.*

- Combines a dressing stick and a shoehorn.
- Push-pull S-hook at one end, and a long-handled shoehorn at the opposite end.
- Hook end can be used to help put on clothing, or to reach clothes hangers on high closet rods.
- Other uses include retrieving clothing from floors, chairs or closets, and turning light switches on and off.
- Purple foam grip is soft and comfortable.

Dressing Pal	Length
NC28581	24" (61 cm)
NC28582	30" (76 cm)

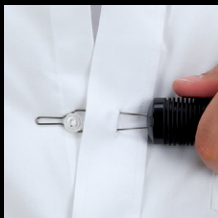


To order, log in at [www.ncmedical.com](http://www.ncmedical.com)  
or call **800.821.9319**



OXO

# GOOD GRIPS® Button Hook



***Get a secure, cushioned grip on hard-to-grasp buttons.***

- The soft, cushioned grip makes the sometimes difficult task of buttoning clothes easier.
- The built-up handle is made of a rubber-like material and features flexible ribbing that adapts to any grip.
- The firm,  $2\frac{3}{8}$ " (6.1 cm) long wire section is uniquely formed to slip around most buttons.
- Handle measures  $4\frac{1}{4}$ " (11 cm) long and has a diameter of  $1\frac{3}{8}$ " (3.5 cm).
- The total length measures  $6\frac{3}{4}$ " (17 cm).

## NC28667 Button Hook

*\* Not made with natural rubber latex.*

*The built-up non-slip Santoprene® handle with Fingerprint™ softspots comforts hands while buttoning or un-buttoning.*



*Oxo® and Good Grips® are manufactured by North Coast Medical, Inc. under license from Helen of Troy Limited, US Patent Number RE37,190*

**Non-Slip  
Soft Grip**

**To order, log in at [www.ncmedical.com](http://www.ncmedical.com)  
or call 800.821.9319**



# Easy-Pull™ Sock Aid

**Foot slides easily on the polyester lining while the sock remains secure.**

- Design allows easy application for people who have weak grasp.
- Soft, terrycloth outer covering keeps socks or stockings in place on the aid.
- Smooth lining enables foot to slide into sock easily.

NC28600 Easy-Pull™ Sock Aid



*Large loop handles.*

*Smooth inner lining.*



*Terrycloth outer covering.*

To order, log in at [www.ncmedical.com](http://www.ncmedical.com) or call 800.821.9319





# Molded Sock Aids

**Assist in putting socks on with less bending over.**



- Semi-flexible plastic trough can be modified using a heat gun.
- Soft, foam hand grips for comfortable use.
- Foam disc on underside of trough prevents socks from sliding off.
- Cord lengths can be cut to adjust handle positioning.



## Molded Sock Aid with Two Handles

- Ideal for two-handed use.

NC26602    **Molded Sock Aid with Two Handles**



## Molded Sock Aid with One Handle

- Can be used with one or two hands.

NC26600    **Molded Sock Aid with One Handle**

To order, log in at [www.ncmedical.com](http://www.ncmedical.com) or call **800.821.9319**



# Leg Lifter

Use to raise or lower legs more easily.

- Helpful for hip replacement recovery and overall leg weakness.
- Internal wire retains its shape while lifting and measures 31" (79 cm) long.
- Bendable foothold loop accommodates most feet or casts and measures 9 1/4" (24 cm).
- Total length including hand strap measures 41" (104 cm).

NC94301 Leg Lifter



*Covered with 1"  
(2.5 cm) wide, soft  
polypropylene webbing.*

To order, log in at [www.ncmedical.com](http://www.ncmedical.com) or call **800.821.9319**



# Plastic Shoehorns

Put shoes on with less bending over.



## Plastic Shoehorn

- Classic, durable plastic shoehorn.
- Lightweight and grasp with ease.
- Large hole built-in for hanging.
- Measures 18" (45 cm) long.

NC28611 Plastic Shoehorn



## Plastic Shoehorn with Hook

- Hooked handle for a comfortable hold and for pulling up socks.
- Long curved design reduces the need to bend over when seated.
- Nylon loop for easy storage.
- Measures 16 1/4" (41 cm) long.

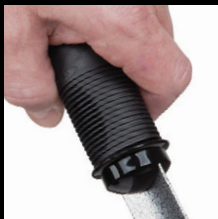
NC28590 Plastic Shoehorn with Hook



To order, log in at [www.ncmedical.com](http://www.ncmedical.com) or call 800.821.9319

OXO

# GOOD GRIPS® Shoehorns



***Offers an extended reach  
and a secure, cushioned grip.***

- Built-up handle made of a latex-free\*, rubber-like material with flexible ribbing that adapts to any grip.
- Shaft is made of enameled steel.
- People who have limited mobility and difficulty bending over will appreciate the extra-long design.
- The textured surface prevents the foot from sticking to the shoehorn, helping it slide easily into the shoe.
- Handle diameter measures 1 1/2" (3.8 cm).

**NC65631 18" (46 cm)**

**NC65632 24" (61 cm)**

**NC65633 30" (76 cm)**

*Available in 18", 24" and 30"  
(46, 61 and 76 cm) lengths.*



\* Not made with natural rubber latex.

Oxo® and Good Grips® are manufactured by North Coast Medical, Inc. under license from Helen of Troy Limited, US Patent Number RE37,190

**Non-Slip  
Soft Grip**

**To order, log in at [www.ncmedical.com](http://www.ncmedical.com)  
or call **800.821.9319****





# FeatherLite™ Reachers

**Extend your reach with our most popular reachers.**



- Easy-to-squeeze triggers, require minimal pressure.
- Durable, lightweight, aluminum frames.
- Pulling lugs for pulling up clothes or blanket.
- Inlaid magnet at tips and magnetized pulling lugs.
- Each model available in two lengths.

## FeatherLite™ Reacher

- Holds lightweight objects up to 3 lbs. (1.4 kg) and measuring up to 2<sup>3</sup>/<sub>4</sub>" (7.0 cm) wide.
- Soft, molded-plastic jaw interlocks at tip.

FeatherLite™ Reacher	Length	Weight
NC28521	26" (66 cm)	6.2 oz. (176 g)
NC28522	32" (81 cm)	7.2 oz. (204 g)

*Inlaid magnet and magnetized lug for picking up small metal objects.*



## FeatherLite™ II Reacher

- Holds lightweight objects up to 2.5 lbs. (1.1 kg) and measuring 3" (7.6 cm) wide.
- Extra curve in trigger, for hanging reacher on a walker or wheelchair.
- Includes plastic clip for additional security.

FeatherLite™ II Reacher	Length	Weight
NC28521	26" (66 cm)	6.2 oz. (176 g)
NC28522	32" (81 cm)	7.2 oz. (204 g)



To order, log in at [www.ncmedical.com](http://www.ncmedical.com) or call 800.821.9319



# Hip Kits

**Custom kits designed for direct patient purchase.**

- Each kit is composed of items that are helpful for various conditions and patient skills.
- Kits may be used for reaching, dressing, bathing and/or toileting.
- Convenient kits include instructions for each product.
- Kits may be appropriate for one handed use or require two hands.

## **Kits may include:**

- Reachers for limited reach.
- Dressing sticks for limited mobility when dressing or for reaching in a closet.
- Long handle shoe horns to slip-on shoes without bending.
- Elastic shoelaces to change tie-shoes into slip-on shoes.
- Long handle bath sponge for hard to reach areas, such as feet and legs.
- Leg lifter for bed transfers or to lift the leg over the side of a tub.
- Raised toilet seat for limited hip flexion.



*Ask about our  
quantity discounts and  
custom kit configurations.*

To order, log in at **[www.ncmedical.com](http://www.ncmedical.com)** or call **800.821.9319**

## Custom Hip Kit #60

### Kit includes:

- Norco® FeatherLite™ Reacher, 26" (66 cm)
- Norco® Molded Sock Aid with Two Handles
- Norco® Plastic Shoehorn with Hook
- Norco® Bath Sponge, Contoured

NC23000-60    **Custom Hip Kit #60**



## Custom Hip Kit #160

### Kit includes:

- Easy-Slide Shoehorn, 18" (45 cm)
- Norco® FeatherLite™ II Reacher 26" (66 cm)
- Norco® Easy Pull Sock Aid
- After Total Hip Replacement Booklet

NC23000-160    **Custom Hip Kit #160**



## Custom Hip Kit #211

### Kit includes:

- Norco® FeatherLite™ Reacher, 26" (66 cm)
- Norco® Molded Sock Aid with Two Handles
- Norco® Stainless Steel Shoehorn 24" (61 cm)
- Norco® Bath Sponge, Contoured
- Norco® Dressing Stick 27" (69 cm)
- Norco® Deluxe Elastic Shoe Laces, Black 27" (69 cm)

NC23000-211    **Custom Hip Kit #211**



To order, log in at [www.ncmedical.com](http://www.ncmedical.com) or call **800.821.9319**

# Bath Sponges

**Ideal for washing hard-to-reach areas.**

- Sponges made of soft non-irritating polyfoam.
- Plastic handles can be shaped with heat from hair dryer.
- Measures 22" (56 cm) long.



## Round with Loofah-style

Sponge measures 5" (13 cm) in diameter. *One side loofah-style.*



## Regular Round

Sponge measures 5" (13 cm) in diameter.



## Regular Contoured

Sponge measures 5" (13 cm) long.



### Bath Sponges

	Model	Shape
NC28644	Regular	Round
NC28645	Regular	Contoured
NC28650	with Loofah-style	Round

To order, log in at  
**[www.ncmedical.com](http://www.ncmedical.com)** or call **800.821.9319**



# HANDHELD SHOWER HEAD

## With Pause Control

- An easy-to-turn oversized spray control allows the user to choose from three settings: shower, pulsating or massage.
- Lightweight, soft-grip handle with safety strap provides a secure grip.
- Features an extra-long 7 ft. (2.1 m) flex-soft hose for showering while standing or seated. Holder included for use on select chairs.
- Reduces water flow with the exclusive pause control button.



**Cradle**

*Pivot feature on shower cradle allows handheld shower to remain upright.*

**Chrome Model**  
*also available.*



**Holder** for shower  
chair use, included.

*Shower meets the Americans with  
Disabilities Act (ADA) specifications.*

*Limited lifetime warranty.*

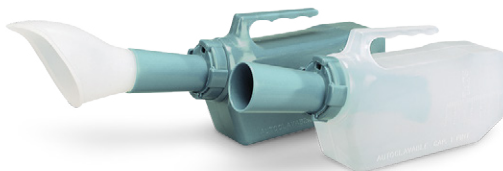
### Pause Control Hand-Held Shower Model

NC34218	White
NC34218-C	Chrome

To order, log in at  
**www.ncmedical.com** or call **800.821.9319**

# SPIIL-PRUF®

Unique design helps prevent leaks.



- Specially designed spout prevents spills, leaks, and reduces odor after urination.
- Perfect for bedside use. Hanging handle also makes it convenient for walker use.
- Works best when used in a seated position.
- Holds 500 cc (17 fl. oz.) of liquid. Autoclave at 225° F (107° C).
- Complete instructions are included.



Available in a **Male** or **Female** model,  
and **Transparent** or **Non-Transparent** plastic.



*Replacement O-Ring Gaskets sold separately in packages of 6.*

## SPIIL-PRUF® Urinals

	Model	Type
NC28711	Male	Transparent
NC28714	Male	Non-Transparent
NC28712	Female	Transparent
NC28714-1	Female	Non-Transparent

## Replacement Parts

NC28714-2	Female Adaptor
NC28714-5	Male Spout
NC28714-6	O-Ring Gaskets (6)

To order, log in at [www.ncmedical.com](http://www.ncmedical.com) or call 800.821.9319

**CONVENIENT+PORTABLE+INFLATABLE**



**EZ-UP  
PILLOW™**

***Simple and comfortable solution  
to elevate the legs or back.***

- Designed by a physical therapist as a portable, inexpensive and simple-to-use therapy pillow.
- Can be used to help relieve pressure, pain or swelling.
- Convenient and easy to use at home and while traveling.
- Clean easily with mild soap and water.
- Dimensions (inflated): 22" L x 22" W x 16" H (56 x 56 x 41 cm).
- Made of gray, non-phthalate PVC plastic.



*Space-saving  
wedge deflates  
for easy storage.*

**Handle for easy carrying**  
**Foot pump included**

**EZ-UP Pillow™**  
**NC80013**



To order, log in at **www.ncmedical.com** or call **800.821.9319**



# Wheelchair Cushions

**Foam cushion offers comfort and support for pressure relief.**

- Made of long-lasting, high density poly-urethane foam. Fire retardant Calif. STD 117.
- Durable, poly-cotton blend cover is removable and machine washable.
- Cushion measures 18" x 16" (46 x 41 cm).
- Available in two thicknesses: **2"** (5.1 cm) and **3"** (7.6 cm).



## Wheelchair Cushions Thickness

NC91408	2" (5 cm)
NC91409	3" (8 cm)



*Tie-straps secure cushion to wheelchair.*



## Mesh-Back Padded Gloves

*Cotton mesh-back keeps hands cool.*

- Provides excellent hand protection to help prevent calluses and bruising.
- Excellent for wheelchair use and various types of exercises.

*Sold in pairs.*

*Genuine leather padded palm for maximum grip.  
Hand wash, air dry.*

### Mesh-Back Padded Gloves

	Size	Palm Circumference
NC53890-2	Small	7" to 8" (18 to 20 cm)
NC53890-3	Medium	8" to 9" (20 to 23 cm)
NC53890-4	Large	9" to 10" (23 to 25 cm)
NC53890-5	X-Large	10" to 11" (25 to 28 cm)
NC53890-7	XX-Large	11 to 12" (28 to 30 cm)

To order, log in at [www.ncmedical.com](http://www.ncmedical.com) or call **800.821.9319**



# Deluxe Steerable Knee Walker

Ideal for individuals recovering from lower extremity injuries or medical conditions.

- Easy to maneuver with stable turn radius.
- Both seat and handle bars are fully adjustable.
- Can be used on left or right leg.
- Handle bar folds down for easy storage.
- Not made from natural rubber latex.

**Handle Height Range:**  
36.5" to 42.5" (93 to 108 cm)

**Knee Pad Dimensions:**  
14.75" x 8.75" (37 x 22 cm)

**Weight Capacity:**  
300 lbs (136 kg)

NC88024    Deluxe Steerable Knee Walker



To order, log in at [www.ncmedical.com](http://www.ncmedical.com) or call 800.821.9319

# Cotton Gait Belts with Metal Buckle

**A safe, easy way to transfer clients.**



**Rainbow  
Pastel**



**Blue**

- Cotton Gait Belts can be used as walking and transferring belts.
- Safety-locking teeth hold the belt securely.
- Available in three colors:  
**White, Blue or Rainbow Pastel.**
- All belts are made of heavy-duty cotton webbing.
- Belts measure 2" (5.1 cm) wide.
- Machine washable cotton.
- Measure waist to determine size.



*Teeth lock for a secure hold.*

## Cotton Gait Belt with Metal Buckle

	Color	Length	Fits Waists
NC91380	White	54" (137 cm)	15" to 51" (38 to 130 cm)
NC91393	Blue	54" (137 cm)	15" to 51" (38 to 130 cm)
NC91391	Rainbow Pastel	54" (137 cm)	15" to 51" (38 to 130 cm)
NC91386	White	60" (152 cm)	15" to 54" (38 to 137 cm)
NC91394	Blue	60" (152 cm)	15" to 54" (38 to 137 cm)
NC91381	Rainbow Pastel	60" (152 cm)	15" to 54" (38 to 137 cm)
NC91387	White	72" (183 cm)	15" to 68" (38 to 173 cm)
NC91383	Blue	72" (183 cm)	15" to 68" (38 to 173 cm)
NC91392	Rainbow Pastel	72" (183 cm)	15" to 68" (38 to 173 cm)



**White**

To order, log in at [www.ncmedical.com](http://www.ncmedical.com) or call **800.821.9319**



# Polyvinyl Gait Belt

Easy-to-clean belt helps prevent cross-contamination.



- Made of vinyl-coated webbing that can be easily cleaned.
- Features a metal buckle that provides a firm grip to prevent slippage.
- Polyvinyl material is sonic-welded and sealed, eliminating crevices for germs to accumulate.
- Belts measure 2" (5.1 cm) wide.
- Available in three lengths.

## Polyvinyl Gait Belts Color

NC35013	54" (137 cm)
NC35014	60" (152 cm)
NC35015	72" (183 cm)



To order, log in at [www.ncmedical.com](http://www.ncmedical.com) or call **800.821.9319**

# Elbow/Heel Protector

## Effective elbow and heel protection.

- Offers excellent skin aeration and is ideal for intermittent use.
- The **Foam Elbow/Heel Protector** has a sewn-in foam pad that measures 6" (15 cm) in diameter.
- The **Gel Elbow/Heel Protector** has a removable, 3½" x 6¼" (8.9 x 16 cm) shock-absorbing gel pad.
- Sleeves are machine washable. Remove gel pad prior to washing. Air dry.
- Sold in pairs.
- Not made with natural rubber latex.



Removable  
gel pad

Foam models with  
sewn-in pads

*To size, measure circumference of elbow or heel where it bends. If in between sizes, choose the larger size.*

### Elbow/Heel Protector - Foam Pad

	Size	Maximum Circumference	Stripe Color
NC58801-1	S	16" (41 cm)	Yellow
NC58801-2	M	17" (43 cm)	Blue
NC58801-3	L	19" (48 cm)	Green
NC58801-4	XL	20" (51 cm)	Red
NC58801-5	2X	28" (71 cm)	Black
NC58801-6	3X	30" (76 cm)	Orange

### Elbow/Heel Protector - Gel Pad

	Size	Maximum Circumference	Stripe Color
NC58800-1	S	16" (41 cm)	Yellow
NC58800-2	M	17" (43 cm)	Blue
NC58800-3	L	19" (48 cm)	Green
NC58800-4	XL	20" (51 cm)	Red

## Flotation™ Elbow and Heel Pads

*Visco-elastic foam distributes pressure evenly.*

- Elastic foam cushion with a snug-fitting, knitted cotton sleeve.
- Self-contouring cushion comfortably adjusts to any shape.
- Both **Regular** and **Large** sizes include a 8" x 5.5" x 0.5" (20 x 14 x 1.3 cm) pad.
- Sold in pairs.

*To size, measure circumference at the bend of the elbow or heel.*

### Flotation™ Elbow and Heel Pads

	Size	Elbow/Heel Circumference
NC44889	Regular	9½" to 10½" (24 to 27 cm)
NC44890	Large	10½" to 12" (27 to 30 cm)

To order, log in at [www.ncmedical.com](http://www.ncmedical.com) or call **800.821.9319**



# Pil-O-Splint®



## Ideal for treating carpal tunnel syndrome.

- Pil-O-Splint® features two dorsal splints, ergoBeads® filled resting pad for palm, soft foam and poly flannel covering.
- Prevents hand from being held in a harmful position while sleeping
- The **Standard** model covers the fingers up to the DIP joints for full finger relaxation and support. Slides on and off easily and fits forearms with a circumference up to 12" (30 cm).
- The **Wrap-Around** model has a VELCRO® brand strap that can be adjusted easily to fit forearms up to 20" (51 cm).
- Fits either the left or right arm.

	Model	Forearm Circumference
NC10112	Wrap-Around	Up to 20" (51 cm)
NC18101	Standard	Up to 12" (30 cm)



To order, log in at [www.ncmedical.com](http://www.ncmedical.com) or call 800.821.9319

# ULTRA- ORTHO™

## Multipurpose Orthotic

Provides wrist positioning and adjustability for both flexion and extension of the hand, wrist, thumb and digits.



Allows Metacarpophalangeal (MCP) joints to be placed into **extension** for extensor tendon injuries, or **flexion** for joint injuries.



C-BAR  
Maintains webspace of thumb allowing a good sweeping position for adjustable abduction, extension and flexion.



*"The Progress Ultra-Ortho is a functional solution for therapists and physicians. The orthotic is versatile and customizable for a wide variety of diagnoses, both orthopedic and neurological. The skilled craftsmanship and superior materials provide confidence knowing patients are getting a product that will therapeutically protect, progress, and meet all functional goals."*

- Greg Pitts, OTD, OTR/L, CHT



The innovative design combines a malleable frame with dense foam padding for a lightweight, soft orthosis that supports like a moldable plastic splint.

**ULTRA-  
ORTHO™**  
Multipurpose Orthotic



Independent thumb strap allows custom adjustability for securing and supporting thumb in place.

All straps are fastened with a rivet to meet L-Code requirements. Each strap is rounded to prevent shearing and offer maximum comfort and control.



Ultra-Ortho™ is biomechanically designed to immobilize and offer adjustable support to meet a variety of therapeutic goals.

The orthotic is easily adjustable and does not cause any impingement or pressure areas when straps are fastened. This allows the orthotic to be used immediately for a variety of different types of pathologies maximizing the functional outcome and progress as needed without refitting for a new orthotic.

Applications include but are not limited to: contractures due to Dupuytren, head injury, stroke, spinal cord injuries, CVA, arthritic conditions or burns.

*Direction of strapping  
biomechanically controls the  
hand, wrist, and forearm.*

Left	Right	Size
NC25560	NC25561	X-Small
NC25562	NC25563	Small
NC25564	NC25565	Medium
NC25566	NC25567	Large

## One model, multiple applications

The versatile Ultra-Ortho™ eliminates the need of numerous other orthoses, including these Progress™ orthotics:



Progress™  
I.F. (Individual Finger)  
Ball Orthosis



Progress™  
Neutral Resting  
Orthosis



Progress™  
Neutral Hand Cone  
Orthosis



Progress™  
Dorsal Anti-Spasticity  
Orthosis



Progress™  
Palmar Bar Wrist  
Orthosis

To order, log in at [www.ncmedical.com](http://www.ncmedical.com) or call 800.821.9319





# GLADIATOR™

## Superior Grade Materials

**Premium Italian Fabrics**  
for style and comfort



**Anti-Slip Beads**  
for traction and a secure fit



## Wrist Orthosis

### Biomechanical Advantage

- Counterforce straps
- Formfitting
- 2/3 forearm length
- Removable stays
- Breathable
- Lightweight

**Perforated Ariaprene®**  
provides comfortable compression and breathability



**D-Rings**  
anodized aluminum for added strength

**Low Profile Hook**  
injection molded featuring easy pull tabs



*"Gladiator is designed to comfortably protect post-surgical and chronic wrist disorders. The unique bio-mechanical design allows the physician to provide a custom fit while maximizing occupational function."*

- Greg Pitts, OTD, OTR/L, CHT

### Comfort Cool® Gladiator™ Wrist Orthosis

	Size	Wrist Circumference	Hand
NC86660	Small	6" to 7" (15 to 18 cm)	Left
NC86661	Small	6" to 7" (15 to 18 cm)	Right
NC86662	Medium	7" to 8" (18 to 20 cm)	Left
NC86663	Medium	7" to 8" (18 to 20 cm)	Right
NC86664	Large	8" to 9" (20 to 23 cm)	Left
NC86665	Large	8" to 9" (20 to 23 cm)	Right
NC86666	X-Large	9" to 10" (23 to 25 cm)	Left
NC86667	X-Large	9" to 10" (23 to 25 cm)	Right

### Comfort Cool® Gladiator™ Wrist & Thumb Orthosis

	Size	Wrist Circumference	Hand
NC86650	Small	6" to 7" (15 to 18 cm)	Left
NC86651	Small	6" to 7" (15 to 18 cm)	Right
NC86652	Medium	7" to 8" (18 to 20 cm)	Left
NC86653	Medium	7" to 8" (18 to 20 cm)	Right
NC86654	Large	8" to 9" (20 to 23 cm)	Left
NC86655	Large	8" to 9" (20 to 23 cm)	Right
NC86656	X-Large	9" to 10" (23 to 25 cm)	Left
NC86657	X-Large	9" to 10" (23 to 25 cm)	Right

### Distal Strap

extra-long, customizable strap can be cut to specific length for optimal support. Two-sided hook fastener attaches easily to strap.



**Bicep Cutout**  
allows for active range of motion



To order, log in at  
**www.ncmedical.com**  
or call **800.821.9319**



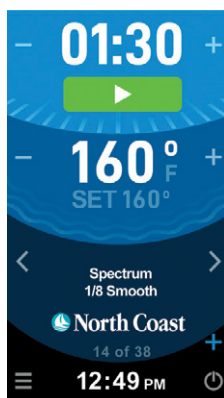


# Smart Splint Pan

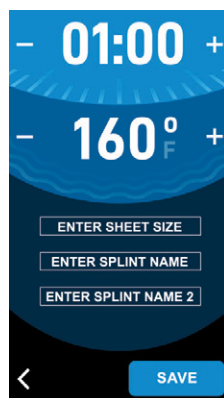


Sterilizes **99.99%** of microbes using high heat and UV light

- Touch screen user interface with parameter adjustability, thermoplastic sheet presets, user presets, auto on/off, education library and more.
- Transparent lid with accordion fold for visibility, heat maintenance and easy access to thermoplastic sheets.
- Heat cold water to precise thermoplastic temperature in less than 20 minutes.
- Automatic drainage pump for quick and easy water evacuation. A built-in water level sensor turns off the pan when water level is too low.
- Thermoset composite construction for durability, insulation, flammability resistance and aesthetic appeal.
- Recessed thermostat for safe and even heating.
- External Dimensions: 20" x 23" x 9" (51 x 58 x 23 cm).
- Tub Dimensions: 13" x 19" x 6" (33 x 49 x 15 cm).
- Glass height (fully raised) measures 9.5" (24 cm). Total height reaches 18.5" (47 cm).
- IEC61010-2 safety rating for hospital and international compliance.



Home screen with factory presets of thermoplastic sheet recommendations.



Create custom presets to fit clinician preferences and non-programmed thermoplastics.

**Strava Smart Splint Pan  
NC14599**

MADE IN THE USA  
BY **VETERANS**

To order, log in at [www.ncmedical.com](http://www.ncmedical.com) or call **800.821.9319**



## Our most versatile splinting material.

### Resistance to Stretch

- **Minimum to moderate resistance to stretch.**
- Tolerates minimum to moderate handling during splint molding.
- Handle on a horizontal plane and form splint in a gravity-assisted position.
- Gentle, smooth motions yield superior results.

### Drape

- **Moderate drape** with only light to moderate pressure.
- Contours are quick to form.

### Memory

- **Minimum to moderate memory.**
- Splints can be modified a few times without thinning.
- Requires less handling and maintains contours while cooling.

### Rigidity

- Molded splints have a **moderate rigidity**.
- A circumferential splint is flexible enough for easy donning and doffing, yet strong enough for immobilization.

### Bonding

- The **NS coating** gives a slightly tacky feel that helps hold the material in place, without the material pulling or falling away.
- A wet bond will hold but can be pulled apart once cooled.
- Dry heating two surfaces will form a strong bond. For a permanent bond, remove coating with an emery cloth and apply dry heat, then press together firmly. Solvent not required.

### Surface Finish

- **Moderate resistance to fingerprints** and resists showing stains.
- **Smooth, self-sealing** cut edges remain sealed even after reheating.

### Applications

- **1/8" Preferred®** can be used for almost any splinting application. Use for dynamic and static splinting; for adult and pediatric positioning; and for post-burn and post-surgical care.
- **3/32" Preferred®** is thin and lightweight, yet strong, and can be used for forearm and hand-based splints. Ideal for arthritis splints, post-operative splints, and for pediatric splints when children are able to cooperate.

### Working Time (1/8")

- Allows three to five minutes of molding time after softening in 160°F (71°C) water.

**Not made with natural rubber latex.**

#### 1/8" (3.2 mm) Preferred® Smooth

NC12790	18" x 24" (45 x 60 cm)	Case (4)
NC12790-1	18" x 24" (45 x 60 cm)	Sheet (1)
NC12791	24" x 36" (60 x 90 cm)	Case (2)

#### 1/8" (3.2 mm) Preferred® Perforated 1%

NC12793	18" x 24" (45 x 60 cm)	Case (4)
NC12793-1	18" x 24" (45 x 60 cm)	Sheet (1)
NC12792	24" x 36" (60 x 90 cm)	Case (2)

#### 3/32" (2.4 mm) Preferred® Smooth

NC12983	18" x 24" (45 x 60 cm)	Case (4)
NC12983-1	18" x 24" (45 x 60 cm)	Sheet (1)

#### 3/32" (2.4 mm) Preferred® Perforated 1%

NC12984	18" x 24" (45 x 60 cm)	Case (4)
NC12984-1	18" x 24" (45 x 60 cm)	Sheet (1)

#### Thickness Guide

1/8"	3.2 mm
3/32"	2.4 mm

#### Perforation Guide

- Smooth
- Perforated, 1%



## Performance characteristics similar to TailorSplint®

TailorSplint is a registered trademark of Performance Health Holdings, Inc.

To order, log in at [www.ncmedical.com](http://www.ncmedical.com) or call 800.821.9319

INTRODUCING:

# Preferred<sup>®</sup> Black

Preferred<sup>®</sup>

*Our new, most versatile, non-stick splinting material can be used by novice or experienced users alike.*

## Resistance to Stretch

- Minimum to moderate resistance to stretch.
- Tolerates minimum to moderate handling during splint molding.
- Handle on a horizontal plane and form splint in a gravity-assisted position.
- Gentle, smooth motions yield superior results.

## Drape

- **Moderate drape** with only light to moderate pressure.
- Contours are quick to form.

## Memory

- **Minimum to moderate memory.**
- Splints can be modified a few times without thinning.
- Requires less handling and maintains contours while cooling.

## Rigidity

- Molded splints have a **moderate rigidity**.
- A circumferential splint is flexible enough for easy donning and doffing, yet strong enough for immobilization.

## Bonding

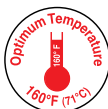
- The **NS coating** gives a slightly tacky feel that helps hold the material in place, without the material pulling or falling away.
- A wet bond will hold but can be pulled apart once cooled.
- Dry heating two surfaces will form a strong bond. For a permanent bond, remove coating with an emery cloth and apply dry heat, then press together firmly. Solvent not required.

### Thickness Guide

1/8"	3.2 mm
3/32"	2.4 mm

### Perforation Guide

- Smooth
- Perforated, 1%



## Surface Finish

- **Moderate resistance to fingerprints** and resists showing stains.
- **Smooth, self-sealing** cut edges remain sealed even after reheating.

## Applications

- **1/8" Preferred<sup>®</sup> Black** can be used for almost any splinting application. Use for dynamic and static splinting; for adult and pediatric positioning; and for post-burn and post-surgical care.
- **3/32" Preferred<sup>®</sup> Black** is thin and lightweight, yet strong, and can be used for forearm and hand-based splints. Ideal for arthritis splints, post-operative splints, and for pediatric splints.

## Working Time (1/8")

- Allows three to five minutes of molding time after softening in 160°F (71°C) water.

**Not made with natural rubber latex.**

### 1/8" (3.2 mm) Preferred<sup>®</sup> Black Smooth

NC12813	18" x 24" (46 x 61 cm)	Case (4)
NC12813-1	18" x 24" (46 x 61 cm)	Sheet (1)

### 1/8" (3.2 mm) Preferred<sup>®</sup> Black Perforated 1%

NC12814	18" x 24" (46 x 61 cm)	Case (4)
NC12814-1	18" x 24" (46 x 61 cm)	Sheet (1)

### 3/32" (2.4 mm) Preferred<sup>®</sup> Black Smooth

NC12815	18" x 24" (46 x 61 cm)	Case (4)
NC12815-1	18" x 24" (46 x 61 cm)	Sheet (1)

### 3/32" (2.4 mm) Preferred<sup>®</sup> Black Perforated 1%

NC12816	18" x 24" (46 x 61 cm)	Case (4)
NC12816-1	18" x 24" (46 x 61 cm)	Sheet (1)

## Performance characteristics similar to TailorSplint<sup>®</sup> Black

*TailorSplint is a registered trademark of Performance Health Holdings, Inc.*

To order, log in at **www.ncmedical.com** or call **800.821.9319**

# Clinic<sup>®</sup>

*Easily stretches and molds around contours for the most intimate fit.*

## Resistance to Stretch

- **Minimum resistance to stretch.**
- When gently pulled, will not stretch or thin uncontrollably during the molding process.
- Handle on a horizontal plane and form the splint in a gravity-assisted position.

## Drape

- **Moderate drape** and excellent reproduction of detail with gentle handling.
- Superior conformability without stretching.

## Memory

- **Minimum memory** when stretched.
- Molded shape remains in place without any need to hold it while it cools. Splints will hold their shape when mildly reheated.

## Rigidity

- **Maximum rigidity.**
- Splints will hold their shape against the pull of strong dynamic components and against hypertonicity.

## Bonding/Surface Finish

- **Traditional coating** has a light tack that holds the material in place. Use over bandages with minimal adherence.
- A wet bond will hold but can be pulled apart once cooled, if necessary.
- Dry heating two surfaces will form a strong bond. For a permanent bond, remove coating with an emery cloth and apply dry heat, then press together firmly. Solvent not required.
- **Resists fingerprints** when handled lightly.
- Lightly heat and rub to remove marks.
- **Self-sealing** cut edges remain smooth, closed and rounded even when reheated.

## Applications

- Ideal for all upper extremity splints, bases for dynamic splints and positioning splints where an intimate fit is required. Makes great immobilization splints, especially for the hand, wrist and fingers.
- Handle using light, smoothing strokes. Allow gravity to do the work. Once positioned, splints remain in place, needing only minimal contact to form. Ideal for sensitive joint or skin conditions or post-surgery.

## Working time (1/8")

- Allows three to five minutes of molding time after softening in 160° F (71° C) water.



*Presents a smooth surface and creates self-sealing edges when handled lightly.*



### Clinic<sup>®</sup> 1/8" (3.2 mm) Smooth

NC12865	18" x 24" (46 x 61 cm)	Case (4)
NC12865-1	18" x 24" (46 x 61 cm)	Sheet (1)
NC12866	24" x 36" (60 x 90 cm)	Case (2)

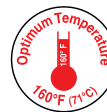
### Clinic<sup>®</sup> 1/8" (3.2 mm) Perforated 1%

NC12867	18" x 24" (46 x 61 cm)	Case (4)
NC12867-1	18" x 24" (46 x 61 cm)	Sheet (1)
NC12868	24" x 36" (60 x 90 cm)	Case (2)

### Clinic<sup>®</sup> 3/32" (2.4 mm) Smooth

NC12879	18" x 24" (46 x 61 cm)	Case (4)
NC12879-1	18" x 24" (46 x 61 cm)	Sheet (1)

*Not made with natural rubber latex.*



### Thickness Guide

1/8"	3.2 mm
3/32"	2.4 mm

### Perforation Guide

- Smooth
- Perforated, 1%

**Performance characteristics similar to Polyform<sup>®</sup>**

*Polyform is a registered trademark of Performance Health Holdings, Inc.*

To order, log in at **www.ncmedical.com** or call **800.821.9319**





**Controlled stretch and drape  
provide excellent contouring  
around bony prominences.**



*Molds easily to form  
smooth, even edges.*

#### **Resistance to Stretch**

- **Moderate to maximum resistance to stretch.**
- Can be stretched and pulled around curves without thinning or growing out of control.
- Able to position limb and aggressively hold and stretch material to form orthoses.

#### **Drape**

- **Moderate drape.**
- Takes on the contours of the hand for an intimate fit using only moderate pressure. Thinner 3/32" material follows the curves of the hand and fingers with minimal handling.

#### **Memory**

- **Moderate memory** will spring back slightly while warm.
- Molds easily to form smooth, even edges.

#### **Rigidity**

- **Maximum rigidity.** Orthoses will hold their shape against the pull of strong dynamic components and against hypertonicity.

#### **Bonding**

- **Uncoated Solaris™** provides a slightly sticky surface when warm to keep material in place for easier molding.
- A permanent bond is achieved by applying dry heat and pressing together firmly. Solvent not required

#### **Surface Finish**

- Fingerprints and marks disappear or can be smoothed away by rubbing the surface gently while the orthosis is warm.
- Leaves **sealed, smooth edges** when cut warm.

#### **Applications**

- Ideal for abnormal tone conditions or joint contractures when patients are unable to cooperate. Its unique qualities make **Solaris™** perfect for adult and pediatric upper and lower extremity positioning orthoses and non-weight-bearing AFOs.
- The combined drape with controlled, resistive stretch allows aggressive, firm handling to form a rigid orthosis that conforms perfectly to the body.

#### **Working Time (1/8")**

- Allows four to six minutes of molding time after softening in 160° F (71° C) water.

**Not made with natural rubber latex.**

#### **1/8" (3.2 mm) Solaris™ Smooth**

NC14030	18" x 24" (46 x 61 cm)	Case (4)
NC14030-1	18" x 24" (46 x 61 cm)	Sheet (1)
NC14032	24" x 36" (61 x 91 cm)	Case (2)

#### **1/8" (3.2 mm) Solaris™ Perforated 1%**

NC14031	18" x 24" (46 x 61 cm)	Case (4)
NC14031-1	18" x 24" (46 x 61 cm)	Sheet (1)
NC14033	24" x 36" (61 x 91 cm)	Case (2)

#### **3/32" (2.4 mm) Solaris™ Smooth**

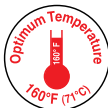
NC14034	18" x 24" (46 x 61 cm)	Case (4)
---------	------------------------	----------

#### **Thickness Guide**

1/8"	3.2 mm
3/32"	2.4 mm

#### **Perforation Guide**

- Smooth
- Perforated, 1%



**Performance characteristics similar to Ezeform®**

*Ezeform is a registered trademark of Performance Health Holdings, Inc.*



To order, log in at **www.ncmedical.com** or call **800.821.9319**



Lightweight, comfortable support.

All Comfort Cool® products are made of a unique, perforated neoprene material lined with soft terry cloth featuring anti-microbial technology.

Comfort Cool® products are an innovative combination of design and materials that make them the best choice for comfort and compliance.

The perforated neoprene material offers soft cushioning for comfort; perforations provide ventilation for more breathability while the terry cloth lining helps keep skin cool.

#### BLACK

Also available in  
Pediatric sizes.



Comfort Cool® Thumb CMC Restriction, BLACK

	Size	DPC Circumference	Hand
NC79562	Sm	6" to 7" (15 to 18 cm)	Left
NC79563	Sm	6" to 7" (15 to 18 cm)	Right
NC79556	Sm Plus	6½" to 7¼" (17 to 18 cm)	Left
NC79557	Sm Plus	6½" to 7¼" (17 to 18 cm)	Right
NC79564	Med	7" to 8" (18 to 20 cm)	Left
NC79565	Med	7" to 8" (18 to 20 cm)	Right
NC79558	Med Plus	7¼" to 8¼" (19 to 21 cm)	Left
NC79559	Med Plus	7¼" to 8¼" (19 to 21 cm)	Right
NC79566	Lg	8" to 9" (20 to 23 cm)	Left
NC79567	Lg	8" to 9" (20 to 23 cm)	Right
NC79568	Lg Plus	8¼" to 9½" (21 to 24 cm)	Left
NC79561	Lg Plus	8¼" to 9½" (21 to 24 cm)	Right
NC79550	X-Lg	9" to 10" (23 to 25 cm)	Left
NC79551	X-Lg	9" to 10" (23 to 25 cm)	Right

# Thumb CMC Restriction Splint

Provides direct support for the thumb CMC joint while allowing full finger function.

- Patented contoured neoprene strap wraps around the thumb CMC joint and the first metacarpal for direct CMC joint support.
- Specifically designed for osteoarthritis and medial subluxation of the thumb CMC joint.
- Reinforced stitching allows the splint to be trimmed below the thumb MP joint if desired.
- Provides gentle compression that helps relieve thumb discomfort associated with CMC joint arthritis and/or instability, tendinitis or repetitive motion.
- Made of thin, 1/16" (1.6 mm) perforated neoprene with a terry cloth liner that helps keep skin cool and comfortable.
- Plus sizes are a half size bigger in the hand and a full size larger in thumb circumference to accommodate enlarged thumb conditions.
- Not made with natural rubber latex.



Comfort Cool® Thumb CMC Restriction, BEIGE

	Size	DPC Circumference	Hand
NC79580	Sm	6" to 7" (15 to 18 cm)	Left
NC79581	Sm	6" to 7" (15 to 18 cm)	Right
NC79582	Sm Plus	6½" to 7¼" (17 to 18 cm)	Left
NC79583	Sm Plus	6½" to 7¼" (17 to 18 cm)	Right
NC79584	Med	7" to 8" (18 to 20 cm)	Left
NC79585	Med	7" to 8" (18 to 20 cm)	Right
NC79586	Med Plus	7¼" to 8¼" (19 to 21 cm)	Left
NC79587	Med Plus	7¼" to 8¼" (19 to 21 cm)	Right
NC79588	Lg	8" to 9" (20 to 23 cm)	Left
NC79589	Lg	8" to 9" (20 to 23 cm)	Right
NC79590	Lg Plus	8¼" to 9½" (21 to 24 cm)	Left
NC79591	Lg Plus	8¼" to 9½" (21 to 24 cm)	Right
NC79592	X-Lg	9" to 10" (23 to 25 cm)	Left
NC79593	X-Lg	9" to 10" (23 to 25 cm)	Right

US PATENT# 6,702,772

To order, log in at [www.ncmedical.com](http://www.ncmedical.com) or call 800.821.9319

# Manutec® Fix Rizart Plus

## CMC Thumb Orthosis

- Support and comfort for the first CMC joint
- Keeps the thumb in the functional position
- Relieves pain and reduces the symptoms of strength loss
- Double injection design and rounded edges for maximum comfort
- Fastening system, secured by a metal core, enables the degree of stability of the trapeziometacarpal joint to be adjusted



Part #	Size	Circumference at MP Joint	Hand
NC36850-1	1	6¼" to 7½" (16 to 19 cm)	Left
NC36851-1	1	6¼" to 7½" (16 to 19 cm)	Right
NC36850-2	2	7½" to 9" (19 to 23 cm)	Left
NC36851-2	2	7½" to 9" (19 to 23 cm)	Right
NC36850-3	3	9" to 10¼" (23 to 26 cm)	Left
NC36851-3	3	9" to 10¼" (23 to 26 cm)	Right

To order, log in at [www.ncmedical.com](http://www.ncmedical.com) or call **800.821.9319**

# Compression Gloves

**Soothe pain and reduce swelling in arthritic hands.**

- Provides warmth and compression for soothing soft tissue edema and arthritic joint pain.
- Two wrist lengths and two finger styles feature an open slit in the cuff, for easy application and non-constricting fit.
- Made of a soft, silky nylon and spandex blend, with seams on the outside for smooth edema control.
- Gloves provide approximately 15 to 25 mmHg of soft, gentle compression to edematous tissue.
- Machine wash delicate, air dry.

	Full Finger	Wrist Length
	Left	Right
S	NC53200	NC53201
M	NC53202	NC53203
L	NC53204	NC53205

Tipless Over The Wrist Length	
Left	Right
XS	NC53220 NC53221
S	NC53222 NC53223
M	NC53224 NC53225
L	NC53226 NC53227



*Gloves sold individually.*



Full Finger Over The Wrist Length		
	Left	Right
XS	NC53210	NC53211
S	NC53212	NC53213
M	NC53214	NC53215
L	NC53216	NC53217

To order, log in at  
**www.ncmedical.com** or call **800.821.9319**

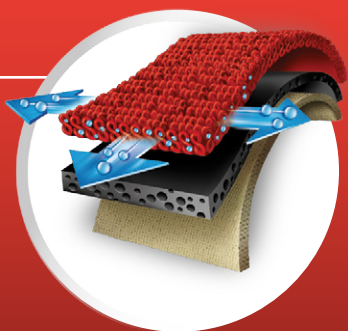


# Thermoskin® Gloves

Warm compression  
for arthritis pain relief.

- Thermoskin® Gloves provide effective treatment and pain relief for repetitive strain injuries, sports injuries, and many other conditions.
- Combines light but firm compression and support to counteract tissue swelling.
- Increases muscle elasticity and reactivity.
- Naturally generates body heat for therapy. Clinically tested to increase skin and muscle temperature.

*Sold in pairs.*



## TRIOXON® ADVANTAGE

Exclusive 3-dimensional lining. The soft, comfortable inner layer wicks away moisture and allows airflow. Middle layer helps increase circulation. Outer layer provides light compression.

Endorsed by:



AUSTRALIAN  
PHYSIOTHERAPY  
ASSOCIATION

### Thermoskin® Gloves Size

### MP Circumference

NC53110	X-Small	6" to 6¾"	(15 to 17 cm)
NC53111	Small	7" to 7¾"	(18 to 20 cm)
NC53112	Medium	8" to 9"	(21 to 23 cm)
NC53113	Large	9¼" to 10½"	(24 to 26 cm)
NC53114	X-Large	10¾" to 11½"	(27 to 29 cm)
NC53115	XX-Large	Over 11¾"	(Over 30 cm)

To order, log in at **www.ncmedical.com** or call **800.821.9319**



# NEW COLORS GREAT QUALITY SAFETY-SEALED CONTAINERS



## Rainbow™ EXERCISE PUTTY

**Promote hand-muscle strength  
and increase endurance.**

- Exercising with Rainbow™ Exercise Putty helps promote increased range of motion, finger-flexion and tendon-gliding.
- Rainbow™ color-coded system associates resistance levels with color.
- The smaller portion cups are perfect for most small and medium sized hands.
- Composed of silicon rubber.



\* Not made with natural rubber latex.

**Latex Free\***

### Soft Orange

NC98200-02	2 oz. (57 g)
NC98200-03	3 oz. (85 g)
NC98200-04	4 oz. (113 g)
NC98200-16	1 lb. (454 g)
NC98200-80	5 lbs. (2.3 kg)

### Medium-Soft Pink

NC98210-02	2 oz. (57 g)
NC98210-03	3 oz. (85 g)
NC98210-04	4 oz. (113 g)
NC98210-16	1 lb. (454 g)
NC98210-80	5 lbs. (2.3 kg)

### Medium Green

NC98220-02	2 oz. (57 g)
NC98220-03	3 oz. (85 g)
NC98220-04	4 oz. (113 g)
NC98220-16	1 lb. (454 g)
NC98220-80	5 lbs. (2.3 kg)

### Medium-Firm Blue

NC98230-02	2 oz. (57 g)
NC98230-03	3 oz. (85 g)
NC98230-04	4 oz. (113 g)
NC98230-16	1 lb. (454 g)
NC98230-80	5 lbs. (2.3 kg)

### Firm Purple

NC98240-02	2 oz. (57 g)
NC98240-03	3 oz. (85 g)
NC98240-04	4 oz. (113 g)
NC98240-16	1 lb. (454 g)
NC98240-80	5 lbs. (2.3 kg)

*Note: The 3 oz. (90 cc of volume) is our most popular size Rainbow™ Exercise Putty and an ideal amount for large or small hands.*

## Putty Containers

- Additional empty containers for exercise putties.
- Cups can hold up to 5 oz. (141 g) of putty.
- Sold in a pack of 10 cups.



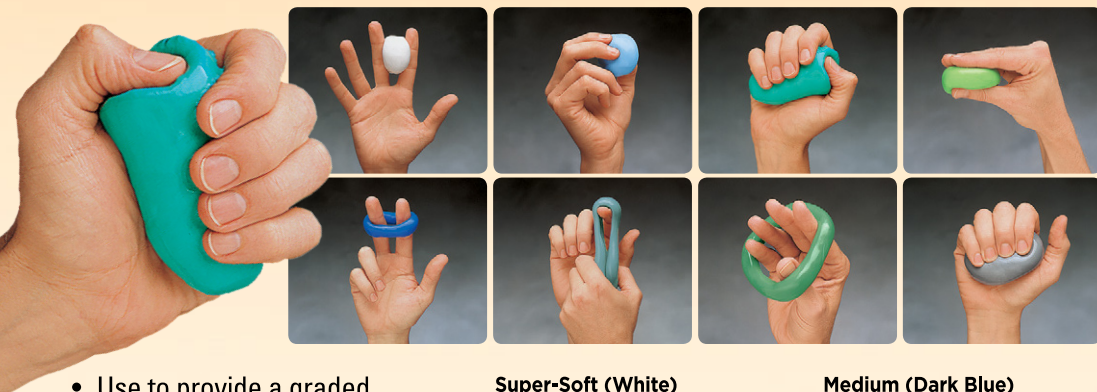
NC51025 Putty Containers (Pack of 10)

To order, log in at [www.ncmedical.com](http://www.ncmedical.com) or call **800.821.9319**



# Exercise Putty

Our premium, best selling putty.



- Use to provide a graded strengthening program for individual fingers or entire hand.
- Helps promote increased range of motion, strengthening and tendon gliding.
- Consistent density gradations allow easy prediction of putty resistance levels.
- Any and all colors of **Norco® Exercise Putty** can be blended, resulting in beautiful, almost endless arrays of aqua-marine colors and varied resistances.
- Smaller portion cups are perfect for most small and medium sized hands.
- Composed of silicon rubber.

*Not made with natural rubber latex.*

## Super-Soft (White)

NC52310-02	2 oz. (57 g)
NC52310-03	3 oz. (85 g)
NC52310-04	4 oz. (113 g)
NC52310-16	1 lb. (454 g)
NC52310-80	5 lb. (2.3 kg)

## Extra-Soft (Light Blue)

NC52320-02	2 oz. (57 g)
NC52320-03	3 oz. (85 g)
NC52320-04	4 oz. (113 g)
NC52320-16	1 lb. (454 g)
NC52320-80	5 lb. (2.3 kg)

## Soft (Turquoise)

NC52330-02	2 oz. (57 g)
NC52330-03	3 oz. (85 g)
NC52330-04	4 oz. (113 g)
NC52330-16	1 lb. (454 g)
NC52330-80	5 lb. (2.3 kg)

## Medium-Soft (Light Green)

NC52340-02	2 oz. (57 g)
NC52340-03	3 oz. (85 g)
NC52340-04	4 oz. (113 g)
NC52340-16	1 lb. (454 g)
NC52340-80	5 lb. (2.3 kg)

## Medium (Dark Blue)

NC52350-02	2 oz. (57 g)
NC52350-03	3 oz. (85 g)
NC52350-04	4 oz. (113 g)
NC52350-16	1 lb. (454 g)
NC52350-80	5 lb. (2.3 kg)

## Medium-Firm (Teal)

NC52360-02	2 oz. (57 g)
NC52360-03	3 oz. (85 g)
NC52360-04	4 oz. (113 g)
NC52360-16	1 lb. (454 g)
NC52360-80	5 lb. (2.3 kg)

## Firm Dark (Green)

NC52370-02	2 oz. (57 g)
NC52370-03	3 oz. (85 g)
NC52370-04	4 oz. (113 g)
NC52370-16	1 lb. (454 g)
NC52370-80	5 lb. (2.3 kg)

## Extra-Firm (Gray)

NC52380-03	3 oz. (85 g)
NC52380-04	4 oz. (113 g)
NC52380-16	1 lb. (454 g)
NC52380-80	5 lb. (2.3 kg)

*Note: The 3 oz. (90 cc of volume) is our most popular size Norco® Exercise Putty and an ideal amount for large or small hands.*

To order, log in at [www.ncmedical.com](http://www.ncmedical.com) or call **800.821.9319**

# Wireless "On-the-Go" Technology

## Intelligent iontophoresis.



Technologically advanced,  
self-contained iontophoresis  
drug delivery system.

- Fully self-contained.
- Intelligent biofeedback microprocessor.
- Hydrogel dispersive technology—no saline required.
- Patented "shut-off" technology.
- SmartPower™ LED.
- Detects and measures skin impedance to optimize drug delivery.

**Active area:** 11.4 cm<sup>2</sup>  
**Dosage:** 40 or 80 mA\*min  
**Skin Adhesive:** Hypoallergenic  
**Maximum Buffer Capacity:** Ag/AgCl Stabilizer  
**Fill Volume:** 2.0cc  
**Smart Power:** 6V with intelligent microprocessor  
**Packaging:** 6 ActivaPatch® Kits, Alcohol Wipes,  
 Patient Information Cards  
**Treatment time:** 2.5 Hours

ActivaPatch® IntelliDose™ 2.5  
 NC89188



**80 mA\*min dose  
 in only 2.5 hours.**

\* Study data on file

# no saline needed.

To order, log in at [www.ncmedical.com](http://www.ncmedical.com) or call 800.821.9319

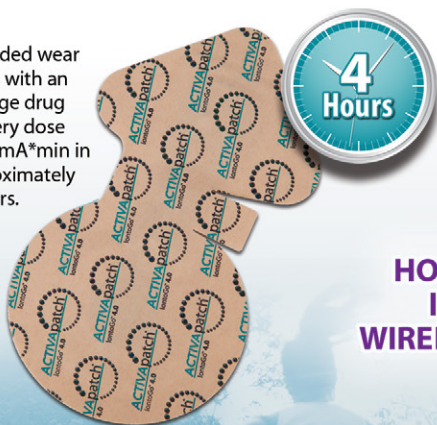


## ActivaPatch® IontoGo™ technology.

No external power source to connect, no leadwires,  
no dose controller needed, power shut down feature and  
**no saline required.**



Extended wear patch with an average drug delivery dose of 80 mA\*min in approximately 4 hours.



**Active area:** 11.4 cm<sup>2</sup>  
**Dosage:** 80 mA\*min  
**Skin Adhesive:** Hypoallergenic  
**Fill Volume:** 2.0cc  
**Packaging:** 6 IontoGo™ 4.0,  
6 Alcohol Wipes  
**Treatment Time:** 4 Hours

**NO  
SALINE  
REQUIRED**

ActivaPatch®  
IontoGo™ 4.0  
NC89189

**FULLY  
SELF-  
CONTAINED**



Extended wear patch with an average drug delivery dose of 80 mA\*min in approximately 12 hours.



**Active area:** 11.4 cm<sup>2</sup>  
**Dosage:** 80 mA\*min  
**Skin Adhesive:** Hypoallergenic  
**Fill Volume:** 2.0cc  
**Packaging:** 6 IontoGo™ 12.0,  
6 Alcohol Wipes  
**Treatment Time:** 12 Hours

**NO  
SALINE  
REQUIRED**

ActivaPatch®  
IontoGo™ 12.0  
NC89191

**FULLY  
SELF-  
CONTAINED**



**HOW SMART  
IS YOUR  
WIRELESS IONTO?**

## Smarter Iontophoresis™

\* Study data on file

To order, log in at [www.ncmedical.com](http://www.ncmedical.com) or call 800.821.9319

# Wired Technology



## ADVANTAGES

- Conforms extremely well to uneven treatment sites.
- Maximum strength, precise buffering with new Carbon-Ag/AgCl technology.
- Large ground electrode surface area lowers sensation and increases comfort.
- Highly absorbant drug matrix.
- Large surface adhesion area.



## TRIVARION® IS AVAILABLE IN THE FOLLOWING SIZES:



SMALL 1.5cc  
**NC89180B**



MEDIUM 2.0cc  
**NC89181B**



LARGE 3.5cc  
**NC89182B**

**TRIVARION®  
BUTTERFLY**



MEDIUM 2.0cc  
**NC89183B**



## ADVANTAGES

- Two controls operate dose and current, with optional push-knob or turn capabilities.
- High-contrast display indicates dose, time and current.
- More power than dual-channel devices for better penetration; up to 80 volts.
- Automatic current ramp-up and ramp-down for maximum comfort. Dose range from 0 to 80 mA-min with 0.1 mA-min increments.
- Time calculations are performed automatically and recalculated if dose and current settings are changed, or with pause/restart.



**ActivaDose® II Controller  
NC89186**

To order, log in at **www.ncmedical.com** or call **800.821.9319**



*Latex Free\**

# Eco-Stim™

## Neurostimulation Electrodes

- Premium quality Carbon/Hydrogel for maximum comfort.
- Reusable up to 20 times when stored as recommended.
- Compatible with all NMS and TENS devices.
- Personalized packaging for patient data usage.
- FDA cleared for OTC purchase.
- 2mm DIN pigtail connector.
- Available in a variety of shapes and sizes in both foam or cloth

*\* Not made with natural rubber latex.*

**Cloth**

**Foam**

*Personalized packaging  
for patient data usage.*

**4 electrodes  
per pack**



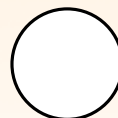
**2" x 2"  
Square**

Foam: NC89292-1  
Cloth: NC89293-1



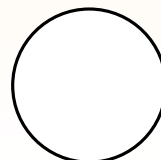
**2" x 4"  
Rectangle**

Foam: NC89292-3  
Cloth: NC89293-3



**2" diameter  
Round**

Foam: NC89292-2  
Cloth: NC89293-2



**2 3/4" diameter  
Round**

Foam: NC89292-4  
Cloth: NC89293-4



To order, log in at  
**[www.ncmedical.com](http://www.ncmedical.com)**  
or call **800.821.9319**



## Quality Products for Evaluation

### Touch Test® Sensory Evaluators

**Manufactured within a 5% standard deviation of each target force.**

- Use to test sensory levels and obtain objective data for accurate reporting on the status of diminishing or returning sensibility.
- Filament bends when peak force threshold is reached.
- Finger indentations on the handle provide a firm, comfortable hold.
- Handles are marked with the corresponding, color-coded pressure level.

*The filament folds into a groove in the handle that is protected by the sleeve when not in use.*

*Rotate the sleeve 180° to expose the filament.*

*Flip the tip back to lock the filament into a 90° angle for application.*



#### Individual Touch Test® Sensory Evaluators

	Size		Size
NC12775-01	1.65	NC12775-11	4.56
NC12775-02	2.36	NC12775-12	4.74
NC12775-03	2.44	NC12775-13	4.93
NC12775-04	2.83	NC12775-14	5.07
NC12775-05	3.22	NC12775-15	5.18
NC12775-06	3.61	NC12775-16	5.46
NC12775-07	3.84	NC12775-17	5.88
NC12775-08	4.08	NC12775-18	6.10
NC12775-09	4.17	NC12775-19	6.45
NC12775-10	4.31	NC12775-20	6.65

*Each kit comes in a protective case with instructions.*

**20 Piece Full Kit**



**6 Piece Foot Kit**



**5 Piece Hand Kit**



#### Touch Test® Sensory Evaluator Kits

	Evaluator Sizes
NC12772	5 Piece Hand Kit 2.83, 3.61, 4.31, 4.56, 6.65
NC12773	6 Piece Foot Kit 2.83, 3.61, 4.31, 4.56, 5.07, 6.65
NC12775-99	20 Piece Full Kit All

To order, log in at [www.ncmedical.com](http://www.ncmedical.com) or call 800.821.9319



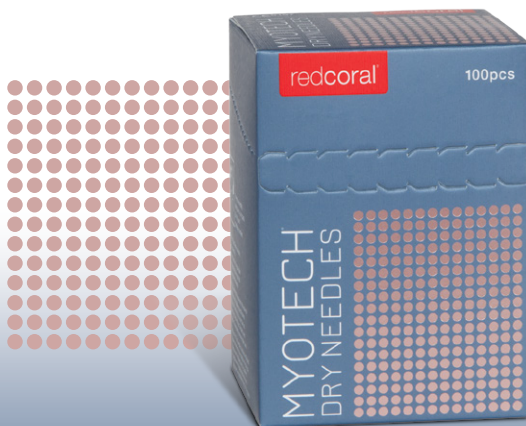
## The Ideal Needle for Dry Needling **Just Got Better**

# MYOTECH<sup>®</sup> DRY NEEDLES 2.0 ELITE

Produced in collaboration with healthcare practitioners and researchers specifically for dry needling.

- High grade German surgical steel.
- Parylene coated needle body for maximum comfort.
- Double clamped, 30% thicker aluminum handle improves dexterity and strength.
- Glue-free pink guide tube for efficient aim and tap insertions.\*
- Microscopic grooves provide surface micro-channeling for near painless insertion.
- 100 sterile needles per box.
- FDA certified.

\*75 mm-100 mm lengths feature an opaque guide tube.  
135 mm length features clear guide tube with glue spot.



Part #	Diameter	Length
RCM2-1630	0.16 mm	30 mm
RCM2-1830	0.18 mm	30 mm
RCM2-1840	0.18 mm	40 mm
RCM2-2215	0.22 mm	15 mm
RCM2-2530	0.25 mm	30 mm
RCM2-2540	0.25 mm	40 mm
RCM2-2550	0.25 mm	50 mm
RCM2-2570	0.25 mm	70 mm
RCM2-3030	0.30 mm	30 mm
RCM2-3040	0.30 mm	40 mm
RCM2-3050	0.30 mm	50 mm
RCM2-3060	0.30 mm	60 mm
RCM2-3075	0.30 mm	75 mm
RCM2-30100	0.30 mm	100 mm
RCM2-40100	0.40 mm	100 mm
RCM2-45135	0.45 mm	135 mm

To order, log in at [www.ncmedical.com](http://www.ncmedical.com) or call **800.821.9319**

# THERMOPHORE®

## Penetrating moist heat therapy packs.

- Fleece cover enhances heat using Moist-Sure™ technology, producing intense moist heat without adding water.
- Classic Easy-Comfort™ Switch allows user to control heat. Automatic cool-down provides added safety, when switch is released.
- Conforms to body contours and can be used directly on the skin.
- Cord length: 10 ft (3 m).
- Max temp: 150 to 165° F (65.5 to 74° C).

**Standard:** large enough to cover the entire spinal area, the length of a hip and leg, or the area across shoulders.



**Petite:** designed for neck, sinus or TMJ area. Beneficial for use on joints of the elbow, knee or ankle. Velcro fastener provides adjustability for small areas.



**Medium:** designed for shoulder, knee or part of abdomen. Also suitable for back or hip.

### Thermophore® Automatic Moist Heat Packs

	Model	Dimension
NC70370	Petite	4" x 17" (10 x 43 cm)
NC70371	Medium	14" x 14" (36 x 36 cm)
NC70373	Standard	14" x 27" (36 x 69 cm)
NC70373-2	Thermophore® Standard Pack Cover	



To order, log in at [www.ncmedical.com](http://www.ncmedical.com) or call 800.821.9319

# MOIST HEAT

## Home Therapy

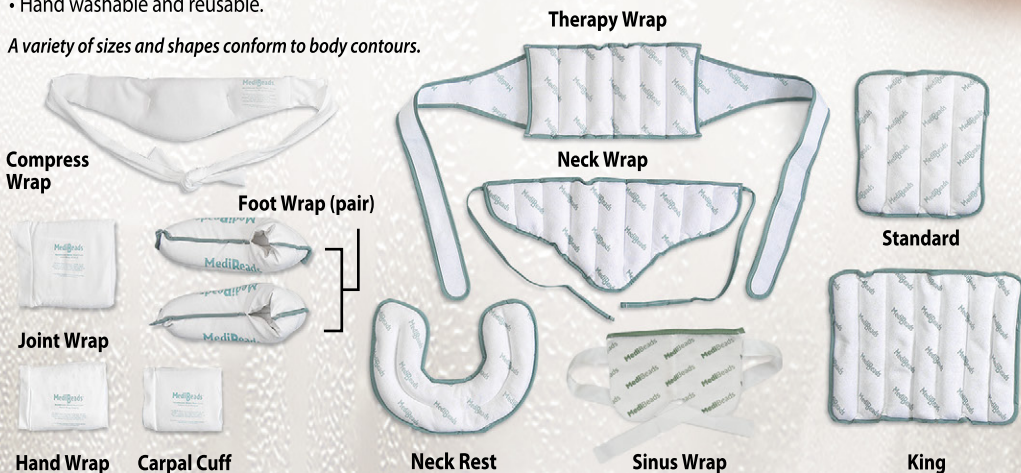
# MediBeads®

### MediBeads® Moist Heat Packs

*Microwavable moist heat packs & wraps for home and clinic.*

- **MediBeads®** are filled with non-toxic beads made from natural materials. Soft packs conform easily to body contours.
- Permanent, anti-microbial agent inhibits odors, mildew and bacteria buildup.
- Moisture-creating beads provide deep, penetrating moist heat therapy without water.
- Heat lasts for up to 30 minutes depending on model.
- After treatment, the beads rejuvenate themselves naturally by recovering moisture from the air.
- Hand washable and reusable.

*A variety of sizes and shapes conform to body contours.*



NC81040-01	Standard	9" x 12"	(23 x 30 cm)
NC81040-02	King	12" x 16"	(30 x 41 cm)
NC81040-03	Neck Rest	10½" x 14"	(27 x 36 cm)
NC81040-04	Hand Wrap	5½" x 7"	(14 x 18 cm)
NC81040-05	Carpal Cuff	4½" x 4½"	(11 x 11 cm)
NC81040-06	Foot Wrap (Pair)	5" x 13"	(13 x 33 cm)
NC81040-07	Neck Wrap	8" x 22"	(20 x 56 cm)
NC81040-08	Sinus Wrap	8¾" x 5½"	(22 x 14 cm)
NC81040-09	Therapy Wrap	7" x 14"	(18 x 36 cm)
NC81040-10	Joint Wrap	6" x 8"	(15 x 20 cm)
NC81040-12	Compress Wrap	5½" x 8½"	(14 x 47 cm)

**Hand Wrap**



**Reusable Covers** - available separately for select models.

NC81040-01C	Standard
NC81040-02C	King
NC81040-07C	Neck Wrap

*Heat in a microwave for approximately one or two minutes. Packs retain heat for up to 30 minutes.*

To order, log in at **www.ncmedical.com** or call **800.821.9319**





# Polyvinyl Cold Packs

Professional cold packs remain flexible and comfortable down to  $-4^{\circ}\text{F}$  ( $-20^{\circ}\text{C}$ ).



**NC70595**

Oversize • 22 x 13 in. (56 x 33 cm)



**NC70596**

Neck Contour • 23 x 8 in. (58 x 20 cm)

- Designed for professional or at-home use.
- Effective relief of pain, discomfort or swelling after injury for up to 30 minutes.
- Conforms to body contours while providing soothing therapy.
- Filled with a premium, non-toxic gel that remains pliable and withstands freezing solid.
- Guaranteed not to split, crack or leak.
- One year manufacturer warranty.
- Not made with natural rubber latex.



**NC70593**

Half Size

9½ x 5½ in. (24 x 14 cm)



**NC70594**

Standard • 15 x 12 in. (38 x 30 cm)



To order, log in at [www.ncmedical.com](http://www.ncmedical.com) or call **800.821.9319**





# Soft Cold Packs

Long-lasting cold packs conform to body contours and feature reinforced seams.

- Reusable packs are perfect for at-home use.
- Provides effective relief from muscular pain and helps reduce swelling.
- Specially designed seams allow the cold packs to conform to body contours for a more effective treatment.
- Filled with an environmentally friendly, non-toxic gel.
- 100% polyester fabric cover is gentle on skin.
- One year manufacturer warranty.
- Not made with natural rubber latex.



**NC70538**

Oversize

21 $\frac{3}{8}$  x 13 $\frac{1}{2}$  in. (55 x 34 cm)



**NC70539**

Neck Contour

22 $\frac{7}{8}$  x 7 $\frac{7}{8}$  in. (58 x 20 cm)



**NC70536**

Half Size

10 x 6 in. (25 x 15 cm)



**NC70537**

Standard

15 x 12 $\frac{1}{2}$  in. (38 x 31 cm)



To order, log in at [www.ncmedical.com](http://www.ncmedical.com)  
or call **800.821.9319**



# Thermotherapy Paraffin Bath

**Can be operated 24 hours a day,  
so wax is always warm and ready to use.**

- Use as an effective warm-up prior to therapeutic exercise, massage and daily activities. Helps increase range of motion. Deep, penetrating heat helps relieve arthritis pain, relax stiff muscles and ease aching joints.
- Provides intensive moisture therapy that nourishes dry skin.
- Oversize inner tank can hold 9 lbs (4.1 kg) of wax and measures 11¾" long x 6¾" wide x 5" deep (29 x 17 x 13 cm).
- Includes 6 lbs. (2.7 kg) of triple-filtered FDA food-grade paraffin in ScentFree™ or Wintergreen scent.
- Worry-free control maintains temperature between 128° and 132° F (53° and 55° C) for maximum therapeutic effect.

**Limited 5 year warranty. Made in the USA.**



**Provides instant  
warmth and relaxation.**

*Accommodates hands,  
and allows for deep dipping  
of feet and elbows.*

Therabath®		Scent
NC15450	110 Volt	ScentFree™ Wax
NC15494	110 Volt	Wintergreen Wax

Paraffin Disposable Plastic Liners		Quantity
NC15492-2	Mitt Liners	100
NC15494-50	Mitt/Boot Liners	100



*Available in five scents and ScentFree™*

## Norco® Premium Paraffin Wax

- Made with pure FDA Food-Grade paraffin, lightly scented and lightly colored.
- Soft, supple and won't crack when cooled.
- Works great in any paraffin spa/bath.
- Sold in six 1 lb. (.45 kg) packages.

NC15496	Wintergreen
NC15496-L	Lavender-Harmony
NC15496-M	Cucumber-Melon
NC15496-P	Peach
NC15496-US	ScentFree™
NC15496-VA	Vanilla



**To order, log in at [www.ncmedical.com](http://www.ncmedical.com) or call 800.821.9319**

# SAUNDERS®

## LUMBAR HOME TRACTION DEVICE

A portable treatment solution that increases patient compliance and satisfaction.

- Safe, proven cost-effective alternative to surgery for some patients.
- Provides safe and effective traction to the lumbar region with a friction-free surface that ensures smooth motion during treatment.
- Split table design replicates clinical traction table and promotes consistency of treatment.
- Blow-off valve limits the amount of force that can be applied.
- Moving treatment surface ensures efficient application of traction.

### NC92347 Saunders® Lumbar Traction

*Easy-to-read pressure gauge.*

*Non-slip harness incorporates belt-organizers for quick set-up.*



*Comes complete - no assembly required.*

*Patented pump design incorporates a simple "click in place" mechanism.*

## CERVICAL HOMETRAC DEVICE

Provides safe and effective traction to the cervical region.

- This device directs traction forces toward the back of the head, thereby preventing compression of the TMJ.
- Applies up to 50 lbs. (23 kg) of traction without assistance.
- Self-adjusting neck wedges rotate through a 30-degree arc.
- Patented pump design has a "click-in-place" mechanism for easy traction control.
- Angle of traction delivery may be adjusted from 15° to 25°, in 5° increments.

### NC92345-1 Saunders® Cervical Hometrac Device



*Includes deluxe carrying case and user guide.*

*Gauge indicates traction in pounds and kilograms.*



To order, log in at [www.ncmedical.com](http://www.ncmedical.com) or call 800.821.9319

# Adjustable Heel Lifts

Peel off layers to easily adjust height.



- Use for leg length correction, pelvic obliquity, plantar fasciitis, and Achilles tendinitis.
- Resilient rubber to maintain lift while absorbing shock.
- Top layer covered with leather for non-slip durability and comfort.
- Three removable 1/8" (3.2 mm) thick layers for adjustment.
- Adds 3/8", 1/4", or 1/8" (9.5, 6.4, or 3.2 mm) in heel height.
- Sizing corresponds to U.S. shoe sizes.



Topped with  
durable leather for  
non-slip comfort.

Adjustable Heel Lift	Size	Shoe Size	Quantity
NC57187-1	Small	Women's up to 7½	1
NC57187-2	Medium	Men's up to 11; Women's 8 and up	1
NC57187-3	Large	Men's 11½	1

To order, log in at [www.ncmedical.com](http://www.ncmedical.com) or call 800.821.9319



## CUSTOM SHOCK ABSORBER

PROVIDES COMFORT, BIOMECHANICAL CONTROL, AND PAIN RELIEF.



- Maximum shock absorption during walking, running, and sports.
- Anatomic design to ensure 100 percent proprioceptive contact.
- Deep heel cup provides motion control and reduces excess pronation.
- Built in metatarsal raise supports the forefoot area.
- Suitable for flat footwear with removable insoles.
- Can be trimmed in the forefoot.
- Sold in pairs.

Part #	Size	Men's Shoe Size	Women's Shoe Size
VAS71SA-XS	X-Small	3½ to 5	4½ to 6
VAS71SA-S	Small	5½ to 7	6½ to 8
VAS71SA-M	Medium	7½ to 9	8½ to 10
VAS71SA-L	Large	9½ to 11	10½ to 12
VAS71SA-XL	X-Large	11½ to 13	—

## VASYLI + PRIOR

LOW-PROFILE SPORTS ORTHOTIC DESIGNED  
 FOR SHALLOW SPORTS FOOTWEAR

IDEAL FOR  
 LOW-PROFILE AND  
 HARD TO FIT  
 FOOTWEAR



- Low-profile medial arch contour ensures comfort, while high density shell provides enhanced fit and performance.
- Intrinsic forefoot contours balance the unique forefoot loads experienced with studs or cleats.
- Subtle 4mm heel raise helps posterior muscles and associated conditions such as Achilles tendinitis.
- Heat moldable for a custom fit.
- Sold in pairs.

Part #	Size	Men's Shoe Size	Women's Shoe Size
VAS71VP-XS	X-Small	3½ to 5	4½ to 6
VAS71VP-S	Small	5½ to 7	6½ to 8
VAS71VP-M	Medium	7½ to 9	8½ to 10
VAS71VP-L	Large	9½ to 11	10½ to 12
VAS71VP-XL	X-Large	11½ to 13	—

**VASYLI** | Signature Series

To order, log in at [www.ncmedical.com](http://www.ncmedical.com) or call 800.821.9319



## VASYLI + MCPOIL

DUAL-DENSITY ORTHOTIC IDEAL FOR  
TISSUE STRESS RELIEF

IDEAL FOR  
THE RECOVERY  
OF SPORTS  
INJURIES



- Dual density construction designed to allow for normal foot pronation while preventing overpronation.
- Ideal for conditions of hypermobility or Achilles stress resulting from traumatic supination or sports injuries.
- Helps relieve pain the back, knee, and heel.
- Heat moldable for a custom fit.
- Sold in pairs.

Part #	Size	Men's Shoe Size	Women's Shoe Size
VAS71MCP-XS	X-Small	3½ to 5	4½ to 6
VAS71MCP-S	Small	5½ to 7	6½ to 8
VAS71MCP-M	Medium	7½ to 9	8½ to 10
VAS71MCP-L	Large	9½ to 11	10½ to 12
VAS71MCP-XL	X-Large	11½ to 13	—

**VASYLI** | Signature Series

To order, log in at [www.ncmedical.com](http://www.ncmedical.com) or call 800.821.9319

## ACCESSORIES

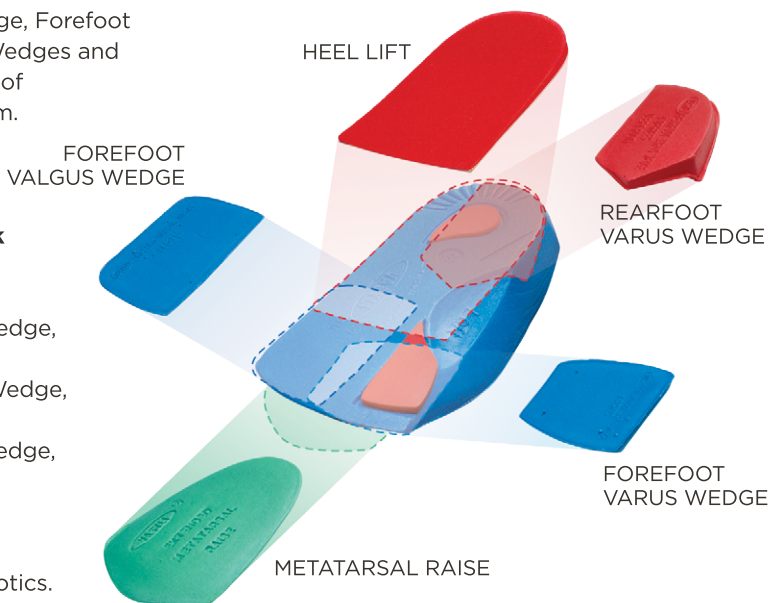
FULL RANGE OF SELF-ADHESIVE WEDGES AND ADDITIONS.

- Forefoot Valgus Wedge, Forefoot and Rearfoot Varus Wedges and Heel Lift are all made of high density EVA foam.

- **Mixed Additions Pack** contains:

- (2) Metatarsal Raise
- (2) Rearfoot Varus Wedge, 2 degrees
- (2) Forefoot Valgus Wedge, 4 degrees
- (2) Forefoot Varus Wedge, 2 degrees
- (2) Heel Lift, 4 mm

- **Heat Gun** is ideal for custom-molding orthotics. This 1200 watt, UL listed heat gun is light and easy to handle.



### Wedges

Part #	Model	Quantity	Dimensions
VAS12FVR2	Forefoot Varus, 2 degrees	10 pack	2" x 2" (5 x 5 cm)
VAS12FVL4	Forefoot Valgus, 4 degrees	10 pack	3" x 2" (8 x 5 cm)
VAS12RVR2	Rearfoot Varus, 2 degrees	10 pack	2" x 2" (5 x 5 cm)

Heel Lift	Quantity	Dimensions
VAS12H408	10 pack	2 <sup>3</sup> / <sub>8</sub> " (6 cm) x 4 mm

Mixed Additions Pack	Quantity
VAS12AAP	10 (2 of each style)

**Heat Gun**  
 VAS79HGUSACL



To order, log in at [www.ncmedical.com](http://www.ncmedical.com) or call 800.821.9319



## CUSTOM ORTHOTICS

HEAT MOLDABLE & CUSTOMIZABLE, WITH 3 DENSITY OPTIONS TO CHOOSE FROM



Full  
Length



3/4  
Length

- Helps relieve pain in the heel, knee, and back.
- Combines durability with solid biomechanical support and control.
- Two lengths available: **Full** and **3/4**.

- **Low density** is ideal for patients that require special consideration such as seniors, and or patients with diabetes or arthritis.
- **Medium density** is ideal for patients with average weight and activity level and general orthotic needs.
- **High density** is ideal for athletes, high activity individuals, and bariatric patients.
- Sold in pairs.

### Low Density Green

Part #	Size	Length	Men's Shoe Size	Women's Shoe Size
VAS71FG-XS	X-S	Full	3½ to 5	4½ to 6
VAS71RG-XS	X-S	3/4	3½ to 5	4½ to 6
VAS71FG-S	S	Full	5½ to 7	6½ to 8
VAS71RG-S	S	3/4	5½ to 7	6½ to 8
VAS71FG-M	M	Full	7½ to 9	8½ to 10
VAS71RG-M	M	3/4	7½ to 9	8½ to 10
VAS71FG-L	L	Full	9½ to 11	10½ to 12
VAS71RG-L	L	3/4	9½ to 11	10½ to 12
VAS71FG-XL	X-L	Full	11½ to 13	—
VAS71RG-XL	X-L	3/4	11½ to 13	—

### Medium Density Blue

Part #	Size	Length	Men's Shoe Size	Women's Shoe Size
VAS71FB-XS	X-S	Full	3½ to 5	4½ to 6
VAS71RB-XS	X-S	3/4	3½ to 5	4½ to 6
VAS71FB-S	S	Full	5½ to 7	6½ to 8
VAS71RB-S	S	3/4	5½ to 7	6½ to 8
VAS71FB-M	M	Full	7½ to 9	8½ to 10
VAS71RB-M	M	3/4	7½ to 9	8½ to 10
VAS71FB-L	L	Full	9½ to 11	10½ to 12
VAS71RB-L	L	3/4	9½ to 11	10½ to 12
VAS71FB-XL	X-L	Full	11½ to 13	—
VAS71RB-XL	X-L	3/4	11½ to 13	—

### High Density Red

Part #	Size	Men's Length	Women's Shoe Size	Shoe Size
VAS71FR-XS	X-S	Full	3½ to 5	4½ to 6
VAS71RR-XS	X-S	3/4	3½ to 5	4½ to 6
VAS71FR-S	S	Full	5½ to 7	6½ to 8
VAS71RR-S	S	3/4	5½ to 7	6½ to 8
VAS71FR-M	M	Full	7½ to 9	8½ to 10
VAS71RR-M	M	3/4	7½ to 9	8½ to 10
VAS71FR-L	L	Full	9½ to 11	10½ to 12
VAS71RR-L	L	3/4	9½ to 11	10½ to 12
VAS71FR-XL	X-L	Full	11½ to 13	—
VAS71RR-XL	X-L	3/4	11½ to 13	—
VAS71FR-XXL	XX-L	Full	13½ to 15	—

## CUSTOM MAX CONTACT PRO

HELPFUL FOR DIABETIC FOOT CHALLENGES



- Designed to help prevent foot ulcers in at risk diabetics.
- Provides protection to the insensitive or hypersensitive foot.
- Contains a wider forefoot that is ideal for extra wide shoes.
- Can easily be trimmed to fit a narrower profile.
- Soft, plastizote top layer gently conforms to the foot.
- Made from medical-grade materials that retain shape and function while providing total contact and comfort.
- EVA base can be heat molded for custom fit.
- Sold in pairs.

Part #	Size	Men's Shoe Size	Women's Shoe Size
VAS71LCD-XS	X-Small	3½ to 5	4½ to 6
VAS71LCD-S	Small	5½ to 7	6½ to 8
VAS71LCD-M	Medium	7½ to 9	8½ to 10
VAS71LCD-L	Large	9½ to 11	10½ to 12
VAS71LCD-XL	X-Large	11½ to 13	—

To order, log in at [www.ncmedical.com](http://www.ncmedical.com) or call 800.821.9319



## VASYLI + HOKE

DESIGNED FOR THE CONTROL OF THE  
PES CAVUS FOOT TYPE

IDEAL FOR  
PEOPLE WITH A  
HIGH FOOT ARCH



- Indicated for common alignment issues associated with a supinated foot.
- Designed for the control of the pes cavus and high arch foot type.
- Helps relieve pain in the heel, knee, and back.
- Heat moldable for a custom fit.
- Sold in pairs.

Part #	Size	Men's Shoe Size	Women's Shoe Size
VAS71HOKE-XS	X-Small	3½ to 5	4½ to 6
VAS71HOKE-S	Small	5½ to 7	6½ to 8
VAS71HOKE-M	Medium	7½ to 9	8½ to 10
VAS71HOKE-L	Large	9½ to 11	10½ to 12
VAS71HOKE-XL	X-Large	11½ to 13	—

VASYLI | Signature Series

To order, log in at [www.ncmedical.com](http://www.ncmedical.com) or call 800.821.9319

## VASYLI + ARMSTRONG II

SENSITIVE FEET  
 SHEER-REDUCING ORTHOTIC

IDEAL FOR  
 THE TREATMENT OF  
 SENSITIVE FEET  
 AND DIABETIC FEET



- Ideal for patients with plantar sensitivity, loss of plantar fat pad, arthritis, blistering, and peripheral neuropathy.
- Helps reduce shear forces and plantar ulcerations.
- Wider forefoot profile, making it suitable for extra wide footwear.
- Contains an antimicrobial top cover.
- Shock absorbing layer.
- Sold in pairs.

Part #	Size	Men's Shoe Size	Women's Shoe Size
VAS71VAII-XS	X-Small	3½ to 5	4½ to 6
VAS71VAII-S	Small	5½ to 7	6½ to 8
VAS71VAII-M	Medium	7½ to 9	8½ to 10
VAS71VAII-L	Large	9½ to 11	10½ to 12
VAS71VAII-XL	X-Large	11½ to 13	—
VAS71VAII-XXL	XX-Large	13½ to 15	—

**VASYLI** | Signature Series

To order, log in at [www.ncmedical.com](http://www.ncmedical.com) or call 800.821.9319





## VASYLI + DANANBERG

PROFESSIONAL ORTHOTIC DEVICE WITH  
1ST RAY FUNCTION ENHANCEMENT FEATURE

IDEAL FOR THE  
TREATMENT OF  
LOWER BACK PAIN  
AND PLANTAR  
FASCIITIS



- Removable proximal and distal plugs that make treatment of 1st ray function easier.
- Tri-compound construction provides cushion and support.
- Orthotic is heat moldable, allowing for personalization of arch and rearfoot control.
- Helps relieve pain in the heel, knee, or back.
- Ideal for walking and everyday use.
- Sold in pairs.

Part #	Size	Men's Shoe Size	Women's Shoe Size
VAS71HDF-XS	X-Small	3½ to 5	4½ to 6
VAS71HDF-S	Small	5½ to 7	6½ to 8
VAS71HDF-M	Medium	7½ to 9	8½ to 10
VAS71HDF-L	Large	9½ to 11	10½ to 12
VAS71HDF-XL	X-Large	11½ to 13	—
VAS71HDF-XXL	XX-Large	13½ to 15	—

**VASYLI** | Signature Series

To order, log in at [www.ncmedical.com](http://www.ncmedical.com) or call 800.821.9319



North Coast Medical, Inc.  
780 Jarvis Drive, Suite 100  
Morgan Hill, CA 95037

## Our Company

For over 40 years, North Coast Medical has operated as a certified small business, and served the VA as an approved vendor (GSA pending). We are more than just a distributor and manufacturer of products, equipment & supplies. North Coast is a strategic supply chain partner, providing innovative opportunities for our customers and business partners. Now a second-generation family business, we continue to invest in our future while steadfastly adhering to strong ethics and integrity. We invite you to browse our website and discover what is ***more than expected*** at North Coast.

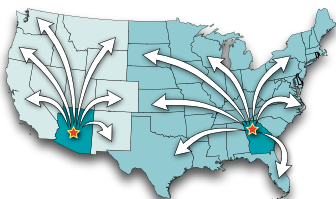
### North Coast proudly offers confidential government VA pricing.

To order, log in at [www.ncmedical.com](http://www.ncmedical.com) or call **800.821.9319** for a price list. Whether orders are placed on the website, or by phone, products are easy to purchase, and most ship the same day.

**FREE SHIPPING**

On e-com orders over \$49.00

*Available for qualified accounts*



*Most orders delivered in  
**1-3 days** anywhere in the U.S.*

 **North Coast**  
MEDICAL & REHABILITATION PRODUCTS  
*More Than Expected™*