

Installation/Operation Instructions

Model 1428 – Multi-Purpose Full-Feature Electric Mat Platform

Platform Ships Fully Assembled

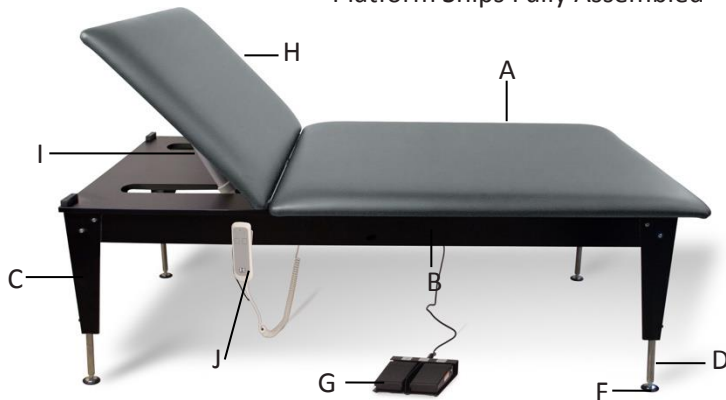


Figure 1: Mat Platform

Product Specifications

Model #	Length	Width	Height	Weight Capacity
1427-47	7'	4'	20" – 30"	750 lbs
1427-57	7'	5'	20" – 30"	750 lbs

Part Lists

Part	Qty	Description
A	1	Upholstered Top
B	4	Black Steel Aprons (2 long, 2 short)
C	4	Corner Steel Legs
D	4	Hydraulic Lift Cylinder/Legs
E	1	115 V Motor/Hydraulic Pump Assembly
F	4	Adjustable Leg Levelers
G	1	1-Funct. Foot Control, 12V DC with 6' cord
H	1	Backrest
I	2	Backrest Actuator
J	2	1-Funct Hand Control, 24 V DC with 6' cord

A) INSTALLATION INSTRUCTIONS

1. Remove all packaging material from the platform.
2. Place the table in position before leveling.
3. Use adjustable wrench to rotate leg levelers for height adjustment.
4. Plug the power cord into a properly grounded 120 Volt AC outlet.

B) OPERATING INSTRUCTIONS

Height Adjustment

Duty cycle on/off Int. 1 min. / 5 min.

1. Raise the platform by gently pressing the on the left side of the footswitch.
2. Lower the platform by gently pressing on the right side of the footswitch.

Backrest Adjustment

Duty cycle on/off Int. 1 min./5 min.

1. Raise the backrest by gently pressing the up arrow on the left side of either hand switch.
 2. Lower the backrest by gently pressing the down arrow on the left side of either hand switch.
- Each hand switch has a magnetic back permitting the hand switch to be hung anywhere on the metal framework.

C) MAINTENANCE

Resynchronization Backrest Actuators

Perform the following steps in case of backrest cease to work.

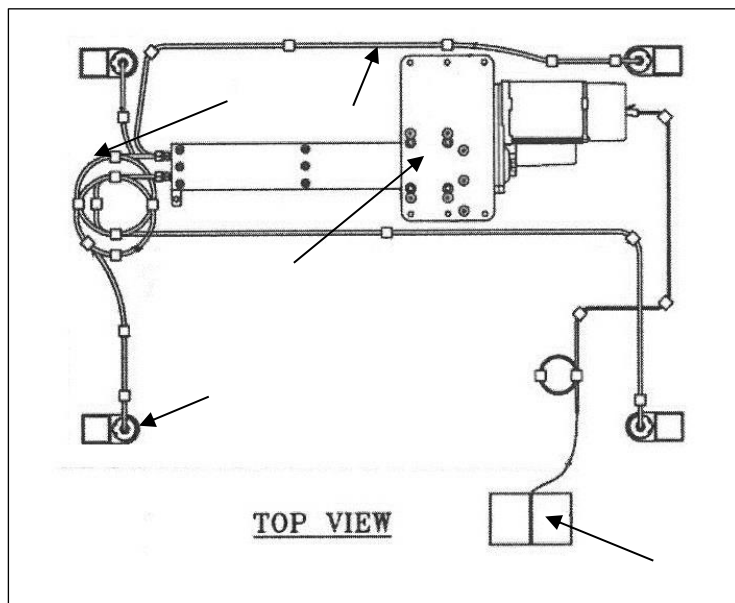
- 1) Press and hold the down button on the hand switch until the backrest is all the way down.
- 2) Release the down button.
- 3) Press and hold the down button again for about 10 sec.
- 4) Release the down button.
- 5) Press and hold again for another 5 to 10 sec.

NOTE: During this step the backrest actuators will retract further down about 0.5" and come back up 0.5".

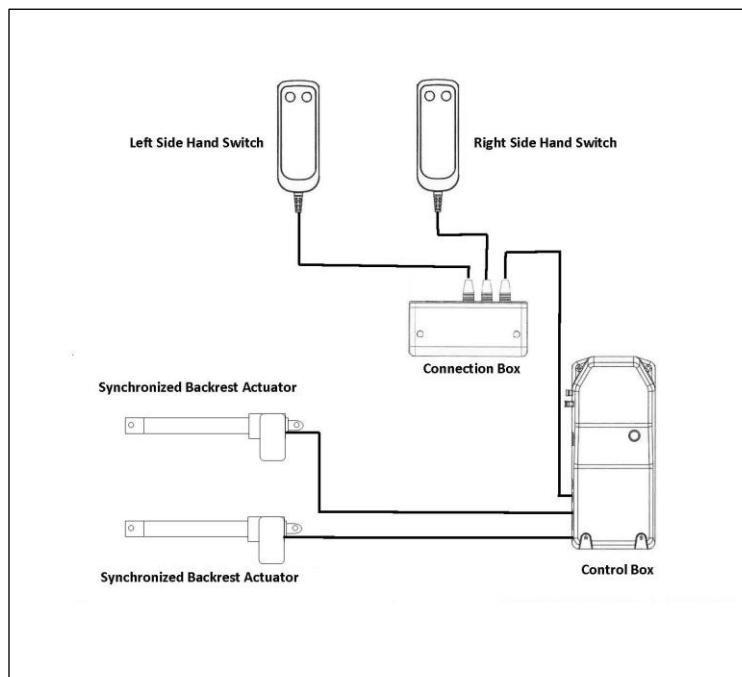
- 6) Release the down button after the backrest actuators complete performing the action listed in step 5.
- 7) Run full cycle on the backrest to make sure it is working fine.

System Control Logic

Hydraulic Hi-Lo Lift System

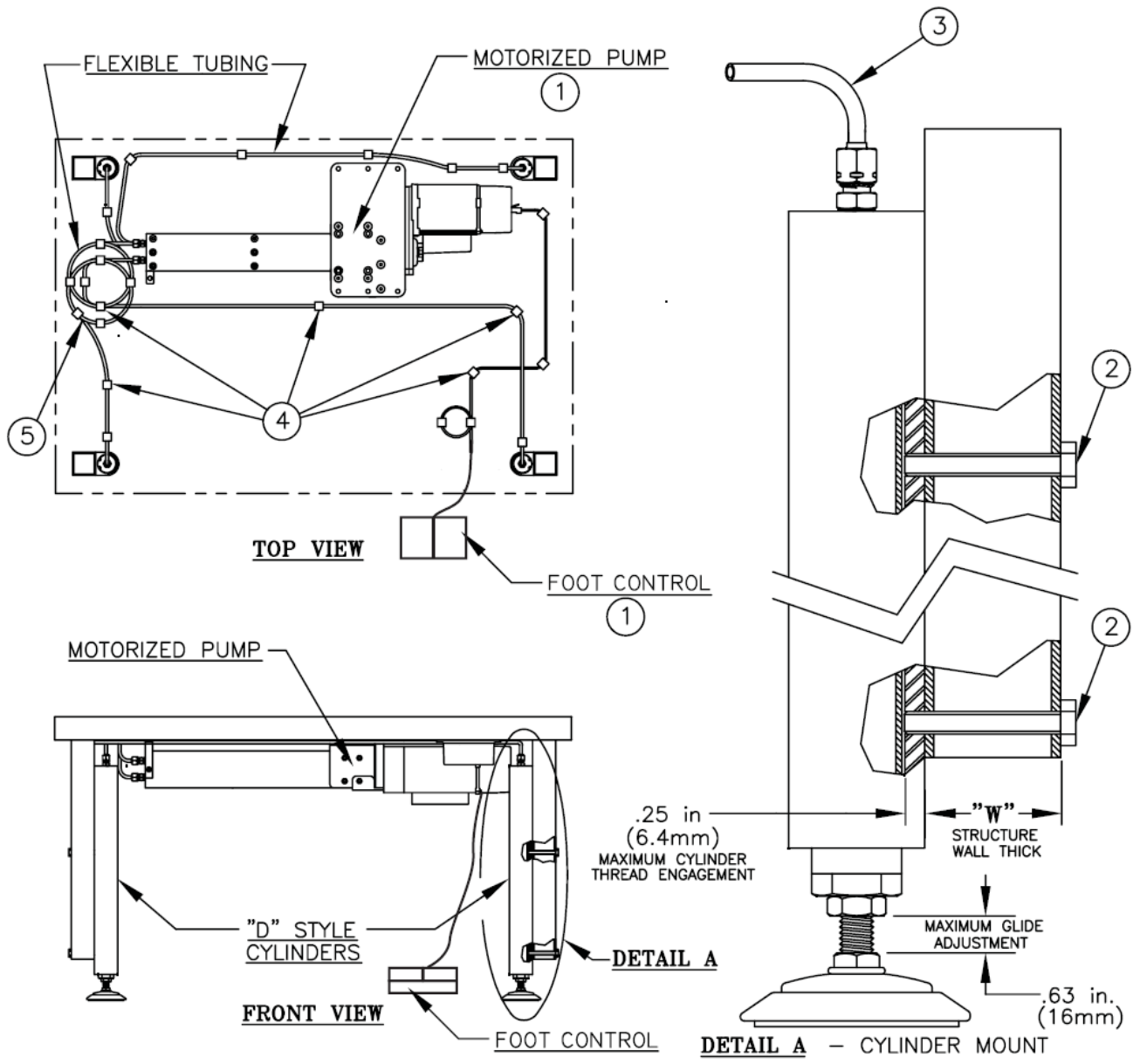


Electric Backrest System



Dyna-Lift® SYSTEM APPLICATION GUIDE

(MOTORIZED DYNA-LIFT® ONLY)



NOTE: LOAD MUST BE EVENLY DISTRIBUTED OVER ALL CYLINDERS.

Warranty Hausmann Industries, Inc. warrants each Hausmann product to be free of defects in material and workmanship, and agrees to remedy any such defect or to furnish a new equal part in exchange therefore. This warranty covers defects in materials and workmanship for three years from date of original purchase, provided such product is used for the normal purpose for which intended and damage is not the result of abuse or misuse.



Please join Hausmann's effort to reduce paper use and keep the planet green by using our paperless Warranty Registration form. Visit www.hausmann.com and click on **Warranty Registration**. If you do not have web access or prefer the form be mailed or faxed to you, please call Hausmann Customer Service.