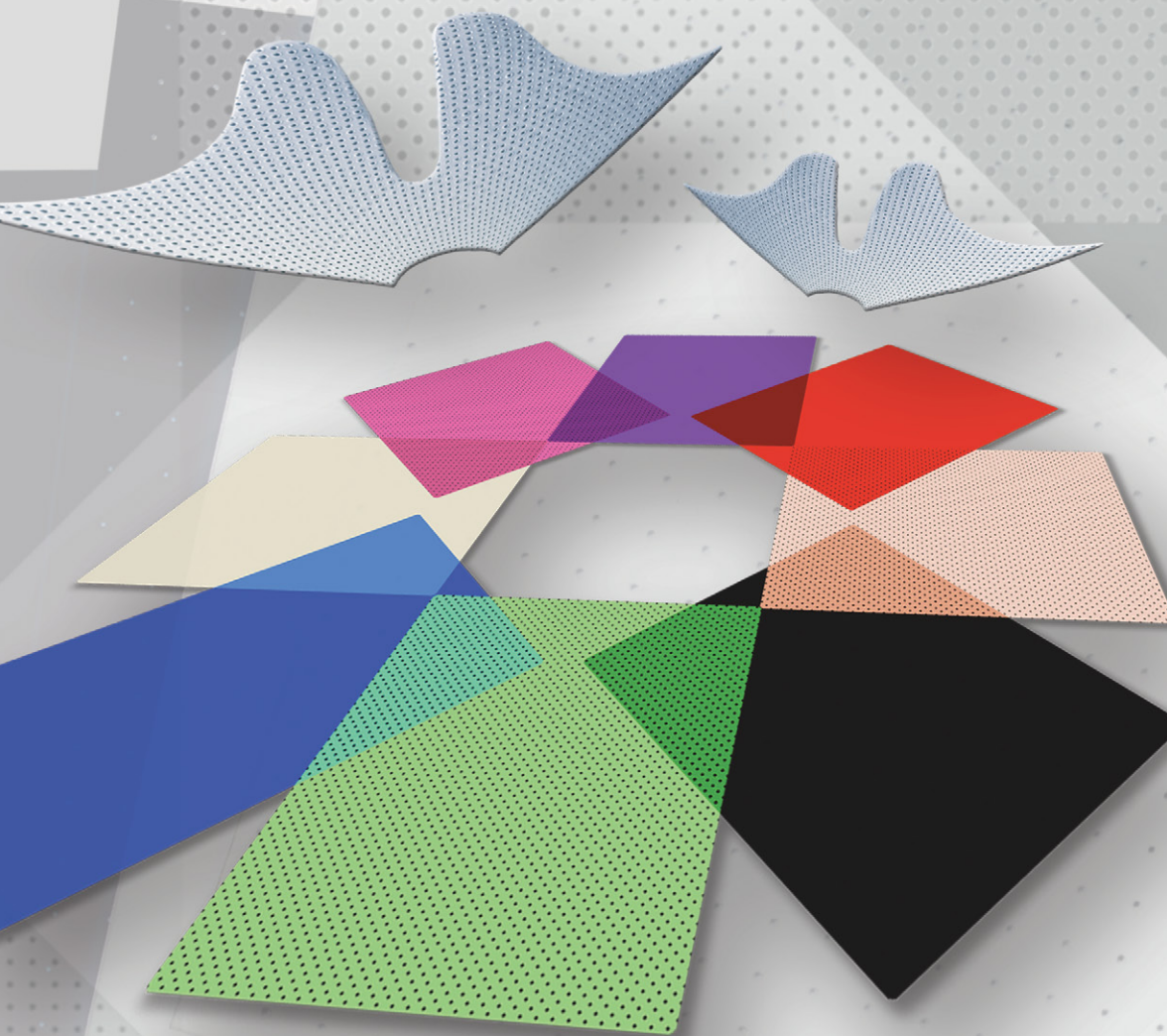




North Coast

MEDICAL & REHABILITATION PRODUCTS



Low temperature

THERMOPLASTICS

for orthotic applications



THERMOPLASTICS

North Coast Medical provides an array of thermoplastic splinting materials to fit all splinting needs. Our thermoplastic materials exhibit various resistance to stretch, memory and drape to facilitate various custom orthotic fabrication.



Degrees of Resistance to Stretch (RTS)

Resistance to Stretch (RTS)	Minimum	RTS	Thermoplastic	Handling Technique	Clinical Application
		Minimum	Clinic®	Minimum RTS: Use light touch or the pull of gravity for an intimate fit. Minimum pressure required to stretch the material.	Minimum RTS: Use for smaller hand and wrist orthoses or when a patient can be placed in the desired position. Ideal for post-surgical and arthritis orthoses.
		Minimum to Moderate	Orfit® Natural NS Orfit® Colors NS Orfit® Classic Orflight™ Encore™ Preferred® Preferred® Black		
		Moderate	Vanilla™ Spectrum™ Prism™	Moderate RTS: Use a moderate amount of pull to conform the material to the body part without leaving marks. Requires moderate pressure to stretch the material.	Moderate RTS: Use for all types of orthoses, i.e., fingers, elbow, wrist, ankle, trunk, knee immobilizers and foot drop orthoses. An experienced splinter can use this type of material most effectively. Inexperienced splinters find this material more forgiving and user friendly.
		Moderate to Maximum	Omega™ Max Solaris™	Maximum RTS: Use firm handling to contour. The material may need to be held in place as it cools. Material resists fingerprints and marks. Requires heavy pressure to stretch the material.	Maximum RTS: Use for larger orthoses, i.e., the elbow, shoulder, lower extremity and trunk. Ideal for spasticity or abnormal tone and joint contractures. Inexperienced or heavy-handed splinters will appreciate this characteristic.
		Maximum	Omega™ Plus Omega™ Black		
		Maximum			

Clinic

Preferred

Encore™

Omega™

Prism™

Vanilla™

SOLARIS™

Spectrum™

orfit

For details about our diverse line of thermoplastics, visit us at www.ncmedical.com, or call 800.821.9319



Easily stretches and molds around contours for the most intimate fit.

Resistance to Stretch

- **Minimum resistance to stretch.**
- When gently pulled, will not stretch or thin uncontrollably during the molding process.
- Handle on a horizontal plane and form the splint in a gravity-assisted position.

Drape

- **Moderate drape** and excellent reproduction of detail with gentle handling.
- Superior conformability without stretching.

Memory

- **Minimum memory** when stretched.
- Molded shape remains in place without any need to hold it while it cools. Splints will hold their shape when mildly reheated.

Rigidity

- **Maximum rigidity.**
- Splints will hold their shape against the pull of strong dynamic components and against hypertonicity.

Bonding/Surface Finish

- **Traditional coating** has a light tack that holds the material in place. Use over bandages with minimal adherence.
- A wet bond will hold but can be pulled apart once cooled, if necessary.
- Dry heating two surfaces will form a strong bond. For a permanent bond, remove coating with an emery cloth and apply dry heat, then press together firmly. Solvent not required.
- **Resists fingerprints** when handled lightly.
- Lightly heat and rub to remove marks.
- **Self-sealing** cut edges remain smooth, closed and rounded even when reheated.

Applications

- Ideal for all upper extremity splints, bases for dynamic splints and positioning splints where an intimate fit is required. Makes great immobilization splints, especially for the hand, wrist and fingers.
- Handle using light, smoothing strokes. Allow gravity to do the work. Once positioned, splints remain in place, needing only minimal contact to form. Ideal for sensitive joint or skin conditions or post-surgery.

Working time (1/8")

- Allows three to five minutes of molding time after softening in 160° F (71° C) water.



Presents a smooth surface and creates self-sealing edges when handled lightly.



Clinic® 1/8" (3.2 mm) Smooth

NC12865	18" x 24" (46 x 61 cm)	Case (4)
NC12865-1	18" x 24" (46 x 61 cm)	Sheet (1)
NC12866	24" x 36" (60 x 90 cm)	Case (2)

Clinic® 1/8" (3.2 mm) Perforated 1%

NC12867	18" x 24" (46 x 61 cm)	Case (4)
NC12867-1	18" x 24" (46 x 61 cm)	Sheet (1)
NC12868	24" x 36" (60 x 90 cm)	Case (2)

Clinic® 3/32" (2.4 mm) Smooth

NC12879	18" x 24" (46 x 61 cm)	Case (4)
NC12879-1	18" x 24" (46 x 61 cm)	Sheet (1)

Not made with natural rubber latex.



Thickness Guide

1/8"	3.2 mm
3/32"	2.4 mm

Perforation Guide

- Smooth
- Perforated, 1%

Performance characteristics similar to Polyform®

Polyform is a registered trademark of Performance Health Holdings, Inc.

To order, log in at **www.ncmedical.com** or call **800.821.9319**



The
personal fit

Orfit® Natural NS

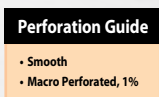
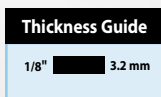
Bright glossy finish in a white semi-transparent color that resists fingerprints. Ideal for a wide variety of splints from small to large. Excellent base for different attachments.

1/8" (3.2 mm) Orfit® Natural NS

NC81347-1	Smooth	18" x 24" (45 x 60 cm)	Sheet (1)
NC81347	Macro Perforated 1%	18" x 24" (45 x 60 cm)	Case (4)

- ◉ **RTS:**
Minimum to moderate
- ◉ **DRAPE:**
Maximum
- ◉ **MEMORY:**
100%
- ◉ **RIGIDITY:**
Moderate

Not made with natural rubber latex.



To order, log in at www.ncmedical.com
or call **800.821.9319**



The
personal fit

Orfit® Colors NS

Beautiful metallic and bright colours. Coloured products are highly recommended if you are looking for new ways to boost your patients' morale, make them feel good and improve patient compliance.

1/12" (2.0 mm) Orfit® Colors NS, Smooth

NC81335	Black	18" x 24" (45 x 60 cm)	Case (4)
NC81337-1	Red	18" x 24" (45 x 60 cm)	Sheet (1)
NC81339-1	Silver	18" x 24" (45 x 60 cm)	Sheet (1)
NC81343-1	Gold	18" x 24" (45 x 60 cm)	Sheet (1)
NC81345-1	Hot Green	18" x 24" (45 x 60 cm)	Sheet (1)

1/12" (2.0 mm) Orfit® Colors NS, Micro Perforated 13%

NC81333-1P	Blue	18" x 24" (45 x 60 cm)	Sheet (1)
NC81335-1P	Black	18" x 24" (45 x 60 cm)	Sheet (1)
NC81337-1P	Red	18" x 24" (45 x 60 cm)	Sheet (1)
NC81339-P	Silver	18" x 24" (45 x 60 cm)	Case (4)
NC81339-1P	Silver	18" x 24" (45 x 60 cm)	Sheet (1)
NC81341-P	Atomic Blue	18" x 24" (45 x 60 cm)	Case (4)
NC81341-1P	Atomic Blue	18" x 24" (45 x 60 cm)	Sheet (1)
NC81345-1P	Hot Green	18" x 24" (45 x 60 cm)	Sheet (1)
NC81343-P	Gold	18" x 24" (45 x 60 cm)	Case (4)

1/8" (3.2 mm) Orfit® Colors NS, Smooth

NC81340-1	Silver	18" x 24" (45 x 60 cm)	Sheet (1)
NC81342-1	Atomic Blue	18" x 24" (45 x 60 cm)	Sheet (1)
NC81344-1	Gold	18" x 24" (45 x 60 cm)	Sheet (1)

1/8" (3.2 mm) Orfit® Colors NS, Mini Perforated 3.5%

NC81340-1P	Silver	18" x 24" (45 x 60 cm)	Sheet (1)
NC81340-P	Silver	18" x 24" (45 x 60 cm)	Case (4)
NC81344-1P	Gold	18" x 24" (45 x 60 cm)	Sheet (1)
NC81342-P	Atomic Blue	18" x 24" (45 x 60 cm)	Case (4)

◎ **RTS:**
Minimum
to moderate

◎ **DRAPE:**
Maximum

◎ **MEMORY:**
100%

◎ **RIGIDITY:**
Moderate

*Not made with
natural rubber latex.*

Thickness Guide

1/8"	3.2 mm
1/12"	2.0 mm

Perforation Guide

- Smooth
- Mini Perforated, 3.5%
- Micro Perforated, 13%



To order, log in at www.ncmedical.com
or call **800.821.9319**



The
personal fit

Orfit® Classic

Excellent elastic and adhesive qualities. Its wide product range makes it ideal for all orthosis types. Exceptional as a base for different attachments, with unlimited potential for fabrication of very large to very small orthoses, according to thickness.

1/12" (2.0 mm) Orfit® Classic

NC12657-1	Smooth	18" x 24" (45 x 60 cm)	Sheet (1)
NC12658-1	Micro Perforated 13%	18" x 24" (45 x 60 cm)	Sheet (1)
NC12659-1	Maxi Perforated	18" x 24" (45 x 60 cm)	Sheet (1)

1/16" (1.6 mm) Orfit® Classic

NC12670-1	Smooth	18" x 24" (45 x 60 cm)	Sheet (1)
NC12671-1	Micro Perforated 13%	18" x 24" (45 x 60 cm)	Sheet (1)
NC12670	Smooth	18" x 24" (45 x 60 cm)	Case (4)

1/8" (3.2 mm) Orfit® Classic

NC12672-1	Smooth	18" x 24" (45 x 60 cm)	Sheet (1)
NC12672	Smooth	18" x 24" (45 x 60 cm)	Case (4)
NC12674	Mini Perforated 3.5%	24" x 36" (60 x 90 cm)	Sheet (1)
NC12676	Smooth	24" x 36" (60 x 90 cm)	Sheet (1)
NC12677-1	Maxi Perforated	18" x 24" (45 x 60 cm)	Sheet (1)

Also available in a low stretch ("stiff") version.

1/12" (2.0 mm) Orfit® Classic Stiff

NC12657	18" x 24" (45 x 60 cm)	1/12" (2.0 mm)	Case (4)
---------	------------------------	----------------	----------

◎ **RTS:**
*Minimum
to moderate*

◎ **DRAPE:**
Maximum

◎ **MEMORY:**
100%

◎ **RIGIDITY:**
Moderate

*Not made with
natural rubber latex.*

Thickness Guide

1/8"	3.2 mm
1/12"	2.0 mm
1/16"	1.6 mm

Perforation Guide

- Smooth
- Mini Perforated, 3.5%
- Micro Perforated, 13%
- Maxi Perforated, 22%



To order, log in at www.ncmedical.com
or call **800.821.9319**



The
personal fit

Orfilight™

Unique lightweight splinting materials with or without a non-stick (NS) coating. They are specifically designed to be lighter and more comfortable on your patient.

1/16" (1.6 mm) Orfilight™, Micro Perforated 13%

NC12664-1	Beige	18" x 24" (45 x 60 cm)	Sheet (1)
NC12664	Beige	18" x 24" (45 x 60 cm)	Case (4)
NC81358-1	Black, NS	18" x 24" (45 x 60 cm)	Sheet (1)
NC12841-1	Atomic Blue, NS	18" x 24" (45 x 60 cm)	Sheet (1)
NC12841	Atomic Blue, NS	18" x 24" (45 x 60 cm)	Case (4)

3/32" (2.5 mm) Orfilight™, Micro Perforated 13%

NC12665-1	Beige	18" x 24" (45 x 60 cm)	Sheet (1)
NC12665	Beige	18" x 24" (45 x 60 cm)	Case (4)
NC81359-1	Black, NS	18" x 24" (45 x 60 cm)	Sheet (1)
NC12842-1	Atomic Blue, NS	18" x 24" (45 x 60 cm)	Sheet (1)
NC12842	Atomic Blue, NS	18" x 24" (45 x 60 cm)	Case (4)

1/8" (3.2 mm) Orfilight™, Smooth

NC12666-1	Beige	18" x 24" (45 x 60 cm)	Sheet (1)
NC81360-1	Black, NS	18" x 24" (45 x 60 cm)	Sheet (1)
NC81360	Black, NS	18" x 24" (45 x 60 cm)	Case (4)

1/8" (3.2 mm) Orfilight™, Mini Perforated 3.5%

NC12667	Beige	18" x 24" (45 x 60 cm)	Case (4)
NC12667-1	Beige	18" x 24" (45 x 60 cm)	Sheet (1)
NC81361-1	Black, NS	18" x 24" (45 x 60 cm)	Sheet (1)
NC12844-1	Atomic Blue, NS	18" x 24" (45 x 60 cm)	Sheet (1)

- ◎ **RTS:**
Minimum
to moderate
- ◎ **DRAPE:**
Moderate
- ◎ **MEMORY:**
Moderate
maximum
- ◎ **RIGIDITY:**
Minimum

*Not made with
natural rubber latex.*

Thickness Guide

1/8"	3.2 mm
3/32"	2.4 mm
1/16"	1.6 mm

Perforation Guide

- Smooth
- Mini Perforated, 3.5%
- Micro Perforated, 13%



To order, log in at www.ncmedical.com
or call **800.821.9319**

Encore™



Variety of colors,
thicknesses & perforations
to meet every splinting need.

Resistance to Stretch

- Minimum to moderate resistance to stretch.
- Use for single-surface splinting or stretched circumferentially.

Drape

- **Maximum drape.**
Excellent conformability and reproduction of detail.
- Turns translucent when thoroughly heated and retains its clarity for the first few minutes of molding, allowing visibility of landmarks and bony prominences.

Memory

- 100% memory.
- Regains its original cut shape/size every time it's reheated.

Rigidity

- Molded splints have a **moderate rigidity**.
- If a more flexible splint is required, simply stretch the material to achieve the desired rigidity and thickness.

Bonding

- **Traditional coating** has a tacky surface that helps hold the splint in place during molding.
- Pieces pinched together can be pulled apart once cooled.
- Use only dry heat and firm pressure to bond firmly; use solvent to form permanent bond.

Surface Finish

- **Resists fingerprints** for a smooth, shiny surface. To remove marks and bring out shine, dip in warm water or lightly heat the surface with dry heat.

Applications

- 1/8" Encore™ for thumb, finger and hand splints, bases for dynamic splints and burn splints. It is also ideal for lower extremity splints, circumferential leg splints, foot drop splints and foot orthoses.
- 3/32" Encore™ for hand and wrist splints, arthritis splints, circumferential splints and burn splints. It is also ideal as a base for smaller dynamic outriggers.
- 1/16" Encore™ for pediatric, positioning, and finger splints.

Working Time (1/8")

- Allows three to five minutes molding time at 160° F (71° C).

Not made with natural rubber latex.

1/8" (3.2 mm) Encore™ Smooth

NCC14000	18" x 24" (46 x 61 cm)	White	Case (4)
NC14000-1	18" x 24" (46 x 61 cm)	White	Sheet (1)
NC14050-1K	18" x 24" (46 x 61 cm)	Black	Sheet (1)
NC14050-B	18" x 24" (46 x 61 cm)	Blue	Case (4)
NC14050-1B	18" x 24" (46 x 61 cm)	Blue	Sheet (1)

1/8" (3.2 mm) Encore™ Perforated 19%

NC14051-K	18" x 24" (46 x 61 cm)	Black	Case (4)
NC14051-1K	18" x 24" (46 x 61 cm)	Black	Sheet (1)

3/32" (2.4 mm) Encore™ Smooth

NC14004	18" x 24" (46 x 61 cm)	White	Case (4)
NC14004-1	18" x 24" (46 x 61 cm)	White	Sheet (1)
NC14052-1K	18" x 24" (46 x 61 cm)	Black	Sheet (1)

3/32" (2.4 mm) Encore™ Perforated 12%

NC14053-K	18" x 24" (46 x 61 cm)	Black	Case (4)
NC14053-1K	18" x 24" (46 x 61 cm)	Black	Sheet (1)
NC14053-1B	18" x 24" (46 x 61 cm)	Blue	Sheet (1)

1/16" (1.6 mm) Encore™ Smooth

NC14006	18" x 24" (46 x 61 cm)	White	Case (4)
NC14006-1	18" x 24" (46 x 61 cm)	White	Sheet (1)
NC14054-1K	18" x 24" (46 x 61 cm)	Black	Sheet (1)

1/16" (1.6 mm) Encore™ Perforated 12%

NC14055-1K	18" x 24" (46 x 61 cm)	Black	Sheet (1)
------------	------------------------	-------	-----------

Thickness Guide

1/8"	3.2 mm
3/32"	2.4 mm
1/16"	1.6 mm

Perforation Guide

- Smooth
- Perforated, 12%
- Perforated, 19%



**Performance characteristics
similar to Aquaplast®**

Aquaplast is a registered trademark of Performance Health Holdings, Inc.

To order, log in at www.ncmedical.com or call 800.821.9319



Our most versatile splinting material.

Resistance to Stretch

- **Minimum to moderate resistance to stretch.**
- Tolerates minimum to moderate handling during splint molding.
- Handle on a horizontal plane and form splint in a gravity-assisted position.
- Gentle, smooth motions yield superior results.

Drape

- **Moderate drape** with only light to moderate pressure.
- Contours are quick to form.

Memory

- **Minimum to moderate memory.**
- Splints can be modified a few times without thinning.
- Requires less handling and maintains contours while cooling.

Rigidity

- Molded splints have a **moderate rigidity.**
- A circumferential splint is flexible enough for easy donning and doffing, yet strong enough for immobilization.

Bonding

- The unique **environmentally friendly coating** gives a tacky feel that helps hold the material in place, without thinning or stretching out of control.
- A wet bond will hold but can be pulled apart once cooled.
- Dry heating two surfaces will form a strong bond. For a permanent bond, remove coating with an emery cloth and apply dry heat, then press together firmly. Solvent not required.

Thickness Guide		
1/8"		3.2 mm
3/32"		2.4 mm

Perforation Guide	
• Smooth	
• Perforated, 1%	



Surface Finish

- **Moderate resistance to fingerprints** and resists showing stains.
- **Smooth, self-sealing** cut edges remain sealed even after reheating.

Applications

- **1/8" Preferred®** can be used for almost any splinting application. Use for dynamic and static splinting; for adult and pediatric positioning; and for post-burn and post-surgical care.
- **3/32" Preferred®** is thin and lightweight, yet strong, and can be used for forearm and hand-based splints. Ideal for arthritis splints, post-operative splints, and for pediatric splints when children are able to cooperate.

Working Time (1/8")

- Allows three to five minutes of molding time after softening in 160° F (71° C) water.

Not made with natural rubber latex.

1/8" (3.2 mm) Preferred® Smooth

NC12790	18" x 24" (45 x 60 cm)	Case (4)
NC12790-1	18" x 24" (45 x 60 cm)	Sheet (1)
NC12791	24" x 36" (60 x 90 cm)	Case (2)

1/8" (3.2 mm) Preferred® Perforated 1%

NC12793	18" x 24" (45 x 60 cm)	Case (4)
NC12793-1	18" x 24" (45 x 60 cm)	Sheet (1)
NC12792	24" x 36" (60 x 90 cm)	Case (2)

3/32" (2.4 mm) Preferred® Smooth

NC12983	18" x 24" (45 x 60 cm)	Case (4)
NC12983-1	18" x 24" (45 x 60 cm)	Sheet (1)

3/32" (2.4 mm) Preferred® Perforated 1%

NC12984	18" x 24" (45 x 60 cm)	Case (4)
NC12984-1	18" x 24" (45 x 60 cm)	Sheet (1)

Performance characteristics similar to TailorSplint®

TailorSplint is a registered trademark of Performance Health Holdings, Inc.

To order, log in at www.ncmedical.com or call 800.821.9319

Preferred® Black



*Our most versatile, splinting material
can be used by novice or experienced users alike.*

Resistance to Stretch

- **Minimum to moderate** resistance to stretch.
- Tolerates minimum to moderate handling during splint molding.
- Handle on a horizontal plane and form splint in a gravity-assisted position.
- Gentle, smooth motions yield superior results.

Drape

- **Moderate drape** with only light to moderate pressure.
- Contours are quick to form.

Memory

- **Minimum to moderate** memory.
- Splints can be modified a few times without thinning.
- Requires less handling and maintains contours while cooling.

Rigidity

- Molded splints have a **moderate rigidity**.
- A circumferential splint is flexible enough for easy donning and doffing, yet strong enough for immobilization.

Bonding

- The unique **environmentally friendly** coating gives a tacky feel that helps hold the material in place, without thinning or stretching out of control.
- A wet bond will hold but can be pulled apart once cooled.
- Dry heating two surfaces will form a strong bond.
For a permanent bond, remove coating with an emery cloth and apply dry heat, then press together firmly.
Solvent not required.

Surface Finish

- **Moderate** resistance to fingerprints and resists showing stains.
- **Smooth, self-sealing** cut edges remain sealed even after reheating.

Applications

- **1/8" Preferred® Black** can be used for almost any splinting application. Use for dynamic and static splinting; for adult and pediatric positioning; and for post-burn and post-surgical care.
- **3/32" Preferred® Black** is thin and lightweight, yet strong, and can be used for forearm and hand-based splints. Ideal for arthritis splints, post-operative splints, and for pediatric splints.

Working Time (1/8")

- Allows three to five minutes of molding time after softening in 160° F (71° C) water.

Not made with natural rubber latex.

1/8" (3.2 mm) Preferred® Black Smooth

NC12813	18" x 24" (46 x 61 cm)	Case (4)
NC12813-1	18" x 24" (46 x 61 cm)	Sheet (1)

1/8" (3.2 mm) Preferred® Black Perforated 1%

NC12814	18" x 24" (46 x 61 cm)	Case (4)
NC12814-1	18" x 24" (46 x 61 cm)	Sheet (1)

3/32" (2.4 mm) Preferred® Black Smooth

NC12815	18" x 24" (46 x 61 cm)	Case (4)
NC12815-1	18" x 24" (46 x 61 cm)	Sheet (1)

3/32" (2.4 mm) Preferred® Black Perforated 1%

NC12816	18" x 24" (46 x 61 cm)	Case (4)
NC12816-1	18" x 24" (46 x 61 cm)	Sheet (1)

Thickness Guide

1/8"	3.2 mm
3/32"	2.4 mm

Perforation Guide

- Smooth
- Perforated, 1%



**Performance characteristics
similar to TailorSplint® Black**

TailorSplint is a registered trademark of Performance Health Holdings, Inc.

To order, log in at **www.ncmedical.com** or call **800.821.9319**



Moderate handling and reheating produce a finished, sculptured appearance.

Resistance to Stretch

- **Moderate resistance to stretch.**
- Tolerates minimum to moderate handling during splint molding.
- Handle on a horizontal plane to form splint in a gravity-assisted position or vertical plane as well.
- Smooth motions yield superior, sculpted results.

Drape

- **Moderate drape** requires only light to moderate pressure to form contour fit.

Memory

- **Minimum to moderate memory.**
- Splints can be reheated and edges will remain smooth and closed.
- Splints will hold their shape when mildly heated for easy fitting adjustments.

Rigidity

- **Moderate degree of rigidity.**
- A circumferential splint is flexible enough for easy donning and doffing, yet strong enough for immobilization.

Bonding

- The **traditional coating** allows splinting over bandages without adherence.
- A pressed, wet bond will hold firmly but can be pulled apart when cooled.
- Dry heating two surfaces will form a strong bond.
- For a permanent bond, use solvent or scrape off coating, dry heat and press together.

Surface Finish

- **Moderate resistance to fingerprints** and resists showing stains.
- **Smooth, self-sealing** cut edges remain sealed even after reheating.

Applications

- **1/8" Vanilla™** can be used for almost any splinting application. Use for dynamic and static splinting; for adult and pediatric positioning; and for post-burn and post-surgical care.
- **3/32" Vanilla™** is thin and lightweight, yet strong, and can be used for forearm, finger and hand-based splints. Ideal for arthritis splints, post-operative splints, and for pediatric splints when children are able to cooperate.

Working Time (1/8")

- Allows three to five minutes of molding time after softening in 160° F (71° C) water.

Not made with natural rubber latex.

1/8" (3.2 mm) Vanilla™ Smooth

NC12924	18" x 24" (46 x 61 cm)	Case (4)
NC12924-1	18" x 24" (46 x 61 cm)	Sheet (1)

1/8" (3.2 mm) Vanilla™ Perforated 1%

NC12926	18" x 24" (46 x 61 cm)	Case (4)
NC12926-1	18" x 24" (46 x 61 cm)	Sheet (1)

3/32" (2.4 mm) Vanilla™ Smooth

NC12928-1	18" x 24" (46 x 61 cm)	Sheet (1)
-----------	------------------------	-----------

3/32" (2.4 mm) Vanilla™ Perforated 1%

NC12931-1	18" x 24" (46 x 61 cm)	Sheet (1)
-----------	------------------------	-----------

Thickness Guide

1/8"	3.2 mm
3/32"	2.4 mm

Perforation Guide

- Smooth
- Perforated, 1%



To order, log in at **www.ncmedical.com** or call **800.821.9319**



Responsive splinting material puts you in control, splint after splint.

Resistance to Stretch

- Moderate resistance to stretch.
- When purposely stretched, Spectrum™ thins evenly so it can be used to make all types of splints with intimate fit and support.

Drape

- Moderate degree of drape.
- With smooth, firm handling, Spectrum™ conforms closely around small contours for an optimal fit.

Memory

- Moderate memory.
- Material springs back slightly when stretched or contoured.
- Splints will hold their shape when heated mildly for fitting adjustments.

Rigidity

- Moderate to firm rigidity.
- Ideal for layer joint positioning.

Bonding

- Traditional coating gives a slightly tacky feel but won't adhere to bandages.
- Forms a strong bond when dry heated and pressed together firmly.
- Use solvent to remove coating and dry heat to form a permanent bond.

Surface Finish

- Resists fingerprinting.
- Marks and fingerprints disappear during cooling.

Applications

- 1/8" Spectrum™ features unique memory and stretch that is ideal for circumferential splints, neurological splints, all hand and wrist splinting, as well as for fracture bracing, lower extremity positioning splints and pediatric, non-weight bearing AFOs.

Working Time (1/8")

- Allows three to five minutes to form and harden after softening in 160° F (71° C) water.

Not made with natural rubber latex.

1/8" (3.2 mm) Spectrum™ Smooth, Beige

NC12979	18" x 24" (46 x 61 cm)	Case (4)
NC12979-1	18" x 24" (46 x 61 cm)	Sheet (1)
NC12980	24" x 36" (61 x 91 cm)	Case (2)

1/8" (3.2 mm) Spectrum™ Smooth, Blue

NC14250	18" x 24" (45 x 60 cm)	Case (4)
NC14250-1	18" x 24" (45 x 60 cm)	Sheet (1)

1/8" (3.2 mm) Spectrum™ Perforated 1%, White

NC12922	18" x 24" (45 x 60 cm)	Case (4)
NC12922-1	18" x 24" (45 x 60 cm)	Sheet (1)

1/8" (3.2 mm) Spectrum™ Perforated 1%, Blue

NC14252	18" x 24" (45 x 60 cm)	Case (4)
NC14252-1	18" x 24" (45 x 60 cm)	Sheet (1)

1/8" (3.2 mm) Spectrum™ Perforated 1%, Beige

NC12981	18" x 24" (45 x 60 cm)	Case (4)
NC12981-1	18" x 24" (45 x 60 cm)	Sheet (1)

Thickness Guide

1/8"  3.2 mm

Perforation Guide

- Smooth
- Perforated, 1%



To order, log in at www.ncmedical.com or call 800.821.9319

Prism™



Make bright, colorful splints that provide comfortable support.

Resistance to Stretch

- Moderate resistance to stretch for easy circumferential splinting.

Drape

- Moderate drape.

Memory

- 100% memory for easy remolding.

Rigidity

- **Minimum rigidity.** Splints flex slightly with pressure for more comfortable wear.
- Circumferential splints will increase rigidity.
- Splints made from 1/8" Prism™ are rigid enough to handle the force of dynamic components.
- Splints made from 1/12" Micro Perforated Prism™ form strong but flexible splints for a variety of lightweight applications.

Bonding

- The unique environmentally friendly coating gives a tacky feel that helps hold the material in place, without thinning or stretching out of control.
- A wet bond will hold firmly but can be pulled apart once cooled.
- For a permanent bond, apply dry heat, then press together firmly. Solvent not required

Surface Finish

- Resists fingerprints, even with aggressive handling.
- Color retains its vibrancy and shine.

Applications

- 1/8" Prism™ can be used for hand and upper extremity splints, lower extremity splints and return-to-work splints. Great for serial splinting.
- 1/12" Prism™ is ideal when a lighter weight, less rigid material is desired. Use for pediatric, finger, thumb and circumferential splints.
- Prism™ turns translucent when ready to apply.
- Leaves sealed, smooth edges when cut warm.

Working Time (1/8")

- Prism™ becomes firm in approximately six minutes at 160° F (71° C).

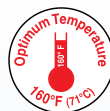
Not made with natural rubber latex.

Thickness Guide

1/8"	3.2 mm
1/12"	2.0 mm

Perforation Guide

- Smooth
- Micro Perforated, 13%



1/8" (3.2 mm) Prism™ Smooth

NC12954-1	18" x 24" (45 x 60 cm)	Black	Sheet (1)
NC12954	18" x 24" (45 x 60 cm)	Black	Case (4)

1/12" (2.0 mm) Prism™ Micro Perforated 13%

NC12891	18" x 24" (45 x 60 cm)	White	Sheet (1)	NC12957	18" x 24" (45 x 60 cm)	Red	Case (4)
NC12892	18" x 24" (45 x 60 cm)	White	Case (4)	NC12957-1	18" x 24" (45 x 60 cm)	Red	Sheet (1)
NC12955	18" x 24" (45 x 60 cm)	Bright Pink	Case (4)	NC12958	18" x 24" (45 x 60 cm)	Black	Case (4)
NC12955-1	18" x 24" (45 x 60 cm)	Bright Pink	Sheet (1)	NC12958-1	18" x 24" (45 x 60 cm)	Black	Sheet (1)
NC12956	18" x 24" (45 x 60 cm)	Royal Blue	Case (4)	NC12964	18" x 24" (45 x 60 cm)	Purple	Case (4)
NC12956-1	18" x 24" (45 x 60 cm)	Royal Blue	Sheet (1)	NC12964-1	18" x 24" (45 x 60 cm)	Purple	Sheet (1)

To order, log in at www.ncmedical.com or call 800.821.9319

Omega™ Max

Conformability, moderate RTS and 100% memory combine for a versatile splinting material.



Resistance to Stretch

- **Moderate resistance to stretch.**
- Moderate to aggressive handling is tolerated.

Drape

- **Moderate to maximum drape** to create a close, conforming fit.
- Provides excellent reproduction of detail.

Memory

- **100% memory.** Ideal for serial splinting.
- Provides excellent reproduction of detail.

Rigidity

- **Moderate to maximum rigidity.**

Bonding

- **Uncoated material.** Provides a very sticky surface when warm and bonds without the need for solvents.
- For a permanent bond to attach outriggers or other accessories, apply dry heat to the surface until shiny and attach accessories directly to the material.
- Wet bonds can be released in warm water if necessary.
- For easier handling, add liquid soap to water and keep thermoplastic damp while molding.

Surface Finish

- Finished splints have a smooth, glossy surface.
- Fingerprints and other surface marks disappear as the material cools. Makes professional looking orthosis.
- When cut while warm, Omega™ Max forms **smooth, sealed edges**.

Applications

- Use 1/8" Omega™ Max for hand or wrist splints back supports, anti-spasticity splints, lower extremity positioning splints, serial static splints and bases for dynamic splints.
- Because of its superior rigidity, 3/32" Omega™ Max can be used for dynamic splint bases.
- Pediatric splints made from the 3/32" thickness have excellent conformability and will hold against strong hypertonicity.

Working time (1/8")

- Allows approximately three minutes to form and harden after softening in 140° F (60° C) to 150° F (65° C) water.
- Fastest setup time, ideal for busy clinics and patients who benefit from less handling time.

Not made with natural rubber latex.

Omega™ Max 1/8" (3.2 mm) Smooth

NC12796	18" x 24" (45 x 60 cm)	Case (4)
NC12796-1	18" x 24" (45 x 60 cm)	Sheet (1)
NC12797	24" x 36" (60 x 90 cm)	Case (2)

Omega™ Max 1/8" (3.2 mm) Perforated 1%

NC12798	18" x 24" (45 x 60 cm)	Case (4)
NC12798-1	18" x 24" (45 x 60 cm)	Sheet (1)
NC12799	24" x 36" (60 x 90 cm)	Case (2)

Omega™ Max 3/32" (2.4 mm) Smooth

NC13300	18" x 24" (45 x 60 cm)	Case (4)
NC13300-1	18" x 24" (45 x 60 cm)	Sheet (1)

Omega™ Max 3/32" (2.4 mm) Perforated 1%

NC13301	18" x 24" (45 x 60 cm)	Case (4)
NC13301-1	18" x 24" (45 x 60 cm)	Sheet (1)

Thickness Guide

1/8"	3.2 mm
3/32"	2.4 mm

Perforation Guide

- Smooth
- Perforated, 1%



To order, log in at
www.ncmedical.com
or call **800.821.9319**



**Controlled stretch and drape
provide excellent contouring
around bony prominences.**



*Molds easily to form
smooth, even edges.*

Resistance to Stretch

- **Moderate to maximum resistance to stretch.**
- Can be stretched and pulled around curves without thinning or stretching out of control.
- Able to position limb and aggressively hold and stretch material to form orthoses.

Drape

- **Moderate drape.**
- Takes on the contours of the hand for an intimate fit using only moderate pressure. Thinner 3/32" material follows the curves of the hand and fingers with minimal handling.

Memory

- **Moderate memory** will spring back slightly while warm.
- Molds easily to form smooth, even edges.

Rigidity

- **Maximum rigidity.** Orthoses will hold their shape against the pull of strong dynamic components and against hypertonicity.

Bonding

- **Uncoated Solaris™** provides a slightly sticky surface when warm to keep material in place for easier molding.
- A permanent bond is achieved by applying dry heat and pressing together firmly. Solvent not required

Surface Finish

- Fingerprints and marks disappear or can be smoothed away by rubbing the surface gently while the orthosis is warm.
- Leaves **sealed, smooth edges** when cut warm.

Applications

- Ideal for abnormal tone conditions or joint contractures when patients are unable to cooperate. Its unique qualities make **Solaris™** perfect for adult and pediatric upper and lower extremity positioning orthoses and non-weight-bearing AFOs.
- The combined drape with controlled, resistive stretch allows aggressive, firm handling to form a rigid orthosis that conforms perfectly to the body.

Working Time (1/8")

- Allows four to six minutes of molding time after softening in 160° F (71° C) water.

Not made with natural rubber latex.

1/8" (3.2 mm) Solaris™ Smooth

NC14030	18" x 24" (46 x 61 cm)	Case (4)
NC14030-1	18" x 24" (46 x 61 cm)	Sheet (1)
NC14032	24" x 36" (61 x 91 cm)	Case (2)

1/8" (3.2 mm) Solaris™ Perforated 1%

NC14031	18" x 24" (46 x 61 cm)	Case (4)
NC14031-1	18" x 24" (46 x 61 cm)	Sheet (1)
NC14033	24" x 36" (61 x 91 cm)	Case (2)

3/32" (2.4 mm) Solaris™ Smooth

NC14034	18" x 24" (46 x 61 cm)	Case (4)
---------	------------------------	----------

Thickness Guide

1/8"	3.2 mm
3/32"	2.4 mm

Perforation Guide

- Smooth
- Perforated, 1%



Performance characteristics similar to Ezeform®

Ezeform is a registered trademark of Performance Health Holdings, Inc.



To order, log in at **www.ncmedical.com** or call **800.821.9319**



Maximum resistance to stretch and minimum drape allows aggressive handling.



Resistance to Stretch

- **Maximum resistance to stretch.**
- Firm handling needed to stretch material.
- Omega™ Plus can be stretched and pulled around curves without thinning or stretching out of control.

Drape

- **Minimum drape.**
- Use firm handling, for smaller contours. Best for larger joints of the body needing firm support.
- Ideal for splinting clients who are unable to cooperate due to spasticity or non-painful contractures.

Memory

- **100% memory.** Ideal for serial splinting.
- If a mistake is made in fitting, reheat and start over.
- Good for infrequent or novice splinters.

Rigidity

- **Maximum rigidity.**
- Upper and lower extremity splints will hold their position even against strong pressure or hypertonicity.

Bonding

- **Uncoated material.** Provides a very sticky surface when warm and bonds without the need for solvents.
- For a permanent bond to attach outriggers or other accessories, apply dry heat to the surface until shiny and attach accessories directly to the material.
- Wet bonds can be released in warm water if necessary.
- For easier handling, add liquid soap to water and keep thermoplastic damp while molding.

Surface Finish

- **Maximum resistance to fingerprints.** Can tolerate aggressive handling.
- If pressure or wrappings are removed while Omega™ Plus is still warm, marks will disappear from the surface.

Applications

- Use for anti-spasticity splints, lower extremity positioning splints, shoulder abduction (airplane) splints, back supports and for serial static splinting.

Working time (1/8")

- Sets up in three to four minutes at 160° F (71° C).
- Quick setup saves time when splinting frightened or non-compliant patients.

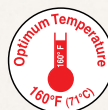
Not made with natural rubber latex.

Omega™ Plus 1/8" (3.2 mm) Smooth, White

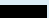
NC13310-1	18" x 24" (45 x 60 cm)	Sheet (1)
NC13311	24" x 36" (60 x 90 cm)	Case (2)
NC13310	18" x 24" (45 x 60 cm)	Case (4)

Omega™ Plus 1/8" (3.2 mm) Perforated 1%, White

NC13312-1	18" x 24" (45 x 60 cm)	Sheet (1)
NC13313	24" x 36" (60 x 90 cm)	Case (2)



Thickness Guide

1/8"  3.2 mm

Perforation Guide

- Smooth
- Perforated, 1%

To order, log in at **www.ncmedical.com**
or call **800.821.9319**

Omega™ Black



Create strong,
polished splints
in less time.

Resistance to Stretch

- **Maximum resistance to stretch.**
- Omega™ Black can be stretched and pulled around curves without thinning or stretching out of control.
- Good for infrequent or novice splinters.

Drape

- **Minimum drape.**
- Use firm handling to make large or small contours.
- Ideal for splinting clients who are unable to cooperate due to spasticity or non-painful contractures.

Memory

- **Moderate memory** helps hold the formed shape when reheated.

Rigidity

- **Maximum rigidity.**
- Upper and lower extremity splints will hold their position even against strong pressure or hypertonicity.

Bonding

- **Uncoated material.** Provides a very sticky surface when warm and bonds without the need for solvents.
- For a permanent bond to attach outriggers or other accessories, apply dry heat to the surface until shiny and attach accessories directly to the material.
- Wet bonds can be released in warm water if necessary.
- For easier handling, add liquid soap to water and keep thermoplastic damp while molding.

Surface Finish

- **Maximum resistance to fingerprints.**
Can tolerate aggressive handling, resulting in a semi-glossy appearance.

- If pressure or wrappings are removed while Omega™ Black is still warm, marks will disappear from the surface.
- Forms **smooth, sealed edges** if cut when warm.

Applications

- 1/8" thickness is recommended for larger areas, i.e. spasticity splints, lower extremity positioning splints, back supports and for serial static splinting.
- 3/32" thickness makes excellent fitting wrist and hand splints.

Working time (1/8")

- Sets up in three to four minutes at 160° F (71°C).
- Quick setup saves time when splinting frightened or non-compliant patients.

Not made with natural rubber latex.

1/8" (3.2mm) Omega™ Black Smooth

NC12796-B	18" x 24" (46 x 61 cm)	Case	(4)
NC12796-1B	18" x 24" (46 x 61 cm)	Sheet	(1)
NC12797-B	24" x 36" (61 x 91 cm)	Case	(2)

1/8" (3.2mm) Omega™ Black Perforated 1%

NC12798-B	18" x 24" (46 x 61 cm)	Case	(4)
NC12798-1B	18" x 24" (46 x 61 cm)	Sheet	(1)
NC12799-B	24" x 36" (61 x 91 cm)	Case	(2)


3/32" (2.4mm) Omega™ Black Smooth

NC13300-B	18" x 24" (46 x 61 cm)	Case	(4)
NC13300-1	18" x 24" (46 x 61 cm)	Sheet	(1)

3/32" (2.4mm) Omega™ Black Perforated 1%

NC13301-B	18" x 24" (46 x 61 cm)	Case	(4)
NC13301-1B	18" x 24" (46 x 61 cm)	Sheet	(1)

Thickness Guide

1/8"		3.2 mm
3/32"		2.4 mm

Perforation Guide

- Smooth
- Perforated, 1%



To order, log in at
www.ncmedical.com
or call **800.821.9319**



The
personal fit

Orficast® Thermoplastic Tape

Unique thermoformable taping material, offers extreme comfort and is very easy to use. Ideal for all applications such as finger and/or thumb orthoses, supportive bandage wraps, and orthoses reinforcement.

Orficast® Thermoplastic Tape, Blue

	Width	Length	
NC62905	3 cm (1.2")	3 m (9.8')	Roll
NC62906	6 cm (2.5")	3 m (9.8')	Roll
NC62906-C	6 cm (2.5")	3 m (9.8')	6 Rolls

Orficast® Thermoplastic Tape, Black

	Width	Length	
NC62907-1	3 cm (1.2")	3 m (9.8')	Roll
NC62908-1	6 cm (2.5")	3 m (9.8')	Roll
NC62908	6 cm (2.5")	3 m (9.8')	6 Rolls

Not made with natural rubber latex.



Orficast® More Thermoplastic Tape

Thicker than original Orficast, the innovative "More" version gives you the ability to meet an extensive range of orthotic applications.

Orficast® More Thermoplastic Tape, Blue

	Width	Length	
NC62909-1	6 cm (2.5")	3 m (9.8')	Roll
NC62910-1	12 cm (4.75")	3 m (9.8')	Roll
NC62911-1	15 cm (5.9")	3 m (9.8')	Roll
NC62912-1	30 cm (12")	3 m (9.8')	Roll

Orficast® More Thermoplastic Tape, Black

	Width	Length	
NC62909-2	6 cm (2.5")	3 m (9.8')	Roll
NC62910-2	12 cm (4.75")	3 m (9.8')	Roll
NC62911-2	15 cm (5.9")	3 m (9.8')	Roll

Not made with natural rubber latex.



Thicker material allows for one-layer rigid orthoses.



To order, log in at www.ncmedical.com
or call **800.821.9319**

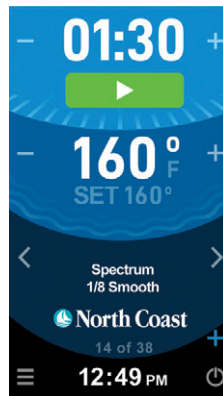


Smart Splint Pan

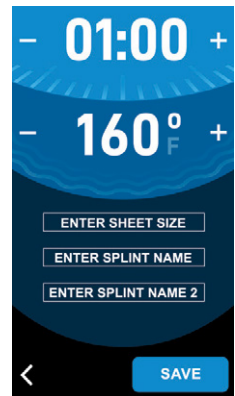


Sterilizes **99.99%**
of microbes using
high heat and UV light

- Touch screen user interface with parameter adjustability, thermoplastic sheet presets, user presets, auto on/off, education library and more.
- Transparent lid with accordion fold for visibility, heat maintenance and easy access to thermoplastic sheets.
- Heat cold water to precise thermoplastic temperature in less than 20 minutes.
- Automatic drainage pump for quick and easy water evacuation. A built-in water level sensor turns off the pan when water level is too low.
- Thermoset composite construction for durability, insulation, flammability resistance and aesthetic appeal.
- Recessed thermostat for safe and even heating.
- External Dimensions: 20" x 23" x 9" (51 x 58 x 23 cm).
- Tub Dimensions: 13" x 19" x 6" (33 x 49 x 15 cm).
- Glass height (fully raised) measures 9.5" (24 cm). Total height reaches 18.5" (47 cm).
- IEC61010-2 safety rating for hospital and international compliance.



Home screen with factory presets of thermoplastic sheet recommendations.



Create custom presets to fit clinician preferences and non-programmed thermoplastics.

**Strava Smart Splint Pan
NC14599**

MADE IN THE USA
BY **VETERANS**

To order, log in at www.ncmedical.com or call **800.821.9319**



YOUR
MOST COMPLETE
SOURCE FOR

Low temperature

THERMOPLASTICS

Clinic

Preferred

Encore

Prism

orfit

SOLARIS

Omega

Vanilla

Spectrum

Our Company

For over 40 years, North Coast Medical has maintained an outstanding reputation in the global rehabilitation market. We are more than just a wholesale distributor and manufacturer of products, equipment & supplies. North Coast is a strategic supply chain partner, providing innovative opportunities for our customers and business partners.

Now a second-generation family business, we continue to invest in our future while steadfastly adhering to strong ethics and integrity. We invite you to browse our website and discover what is **more than expected** at North Coast Medical.

Thousands of medical and rehabilitative products are available at **www.ncmedical.com** - log in to view your professional pricing. Orders can also be placed by phone at **800.821.9319**.



North Coast
MEDICAL & REHABILITATION PRODUCTS

More Than Expected™

NCC6600



(01)00768627000925