



TECHNOLOGY THAT MOVES YOU



“Developed in the laboratory and in partnership with renowned orthopedic surgeons and biomechanics researchers, Opedix® Technology helps improve strength and performance at every stage of movement—from training and performance to injury prevention and recovery. By redirecting the body’s internal forces and improving muscle coordination, our patented technology promotes proper alignment and better overall movement, as well as optimal joint function—allowing you to do the activities you love longer, better, with less pain and fatigue. We call it Kinetic Health Gear. And it powers the way you move.”

A blue ink handwritten signature of Dr. Michael J. Decker.

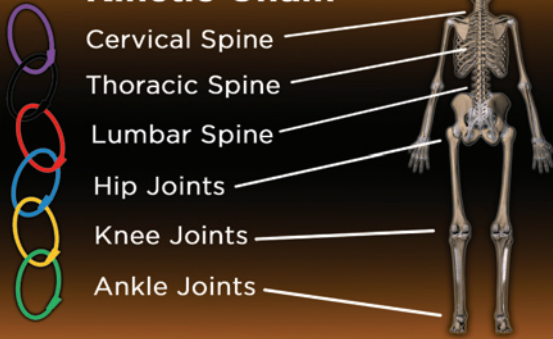
Dr. Michael J. Decker
Biomechanical Scientist

Michael J. Decker, Ph.D. is a Senior Scientist and biomechanical consultant in the Human Dynamics Laboratory at the University of Denver. His research interests include sports medicine and rehabilitation with a specific focus on Kinetic Health. Dr. Decker has trained at the world famous Steadman Philippon Research Institute in Vail, Colorado and has instructed human movement science courses at the University of Colorado and at the University of Texas. He has presented at numerous national and international meetings, published nearly 200 peer reviewed articles including manuscripts and abstracts; and received awards for research, academic and teaching excellence.

Dr. Decker is the original inventor of the **CORE-Tec™ Shorts** and co-developer of the **KNEE-Tec™ Longs**.



Kinetic Chain



OPEDIX[®] IS SCIENCE

Don't let the beautiful design of our products fool you. This gear is all about science. Your body's kinetic health is a measure of how well and efficiently it moves when challenged with injuries, fatigue, and various other factors. Our systems help your body's natural kinetic chain stay in alignment and remain optimized throughout any physical activity.

OPEDIX[®] IS KINETIC HEALTH GEAR

This gear has scientifically designed tensioning systems built within a comfortable, form-fitting base layer to enhance the kinetic functioning of your body. Working like an external muscle, a combination of fabric tensions help direct the body's internal forces and optimize harmonious joint function in the body's kinetic chain.

Francine Bartlett PT, ATC

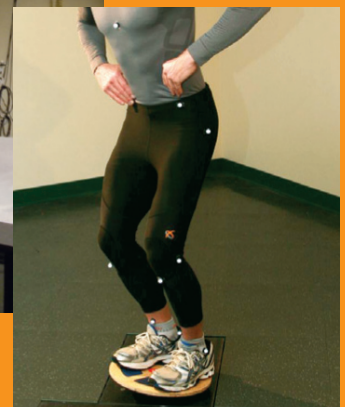
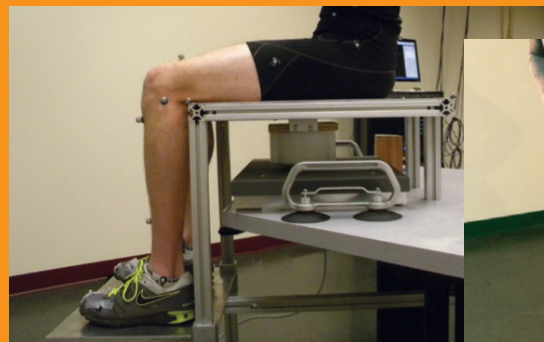
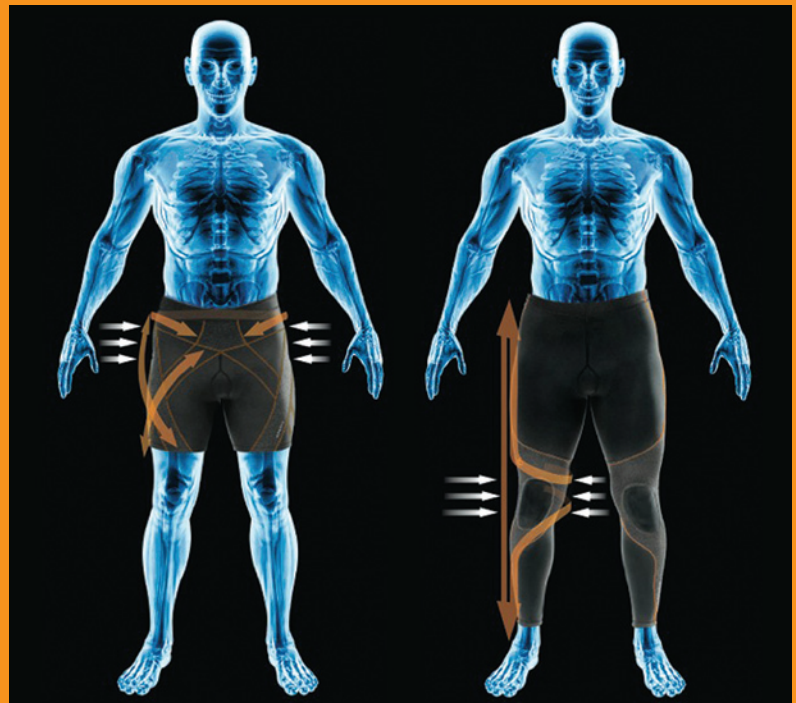
"In my opinion, there is no other product on the market today like Opedix. Whether I am working with an elite athlete or a patient whose goal is to regain and maintain an active lifestyle, Opedix technology has delivered positive results. In fact, the performance has been so impressive that I am now recommending Opedix for nearly all low back, pelvic and lower extremity orthopedic conditions that I treat."



Francine Bartlett is a licensed physical therapist and NATA certified athletic trainer with a Bachelor's Degree in Sports Medicine and Master's Degree in Physical Therapy from Central Michigan University. She is currently pursuing a Doctorate in Physical Therapy specializing in Healthcare Administration and Practice Management through Rocky Mountain University of Healthcare Professionals in Provo, Utah.

REGIONAL INTERDEPENDENCE

Your body is an interconnected system. It consists of myofascial (muscles and connective tissues), articular (joints), and neural (brain and nerves) components. These components have to work closely together and require the sequential coordination of each joint to be properly aligned, stable and mobile to create a movement pattern. The motion produced at any joint in the kinetic chain directly affects the joints above and below it, so, dysfunction in any one component influencing a particular joint may have a direct and detrimental effect on the function of a neighboring joint.



Testing CORE-Tec™ Shorts and KNEE-Tec™ Longs at the University of Denver Human Dynamics Laboratory